

Part No.	Section [mm]	Quantity [nos]	Working Drawing	Weight	
				kg / pc	total kg
1	a Angle 40/40/3 -1980	4		3.64	14.56
	b Angle 40/40/3 -1980	2		3.64	7.28
	c Flat 25/3 l = 281	3		0.165	0.50
	d Flat 37/3 l = 90	6		0.078	0.47
	e RI - Bar f 8 - 340	11		0.134	1.47
Total Transportation Weight = 25.23 kg			Total Structural Steel = Steel to be galvanized :		24.28

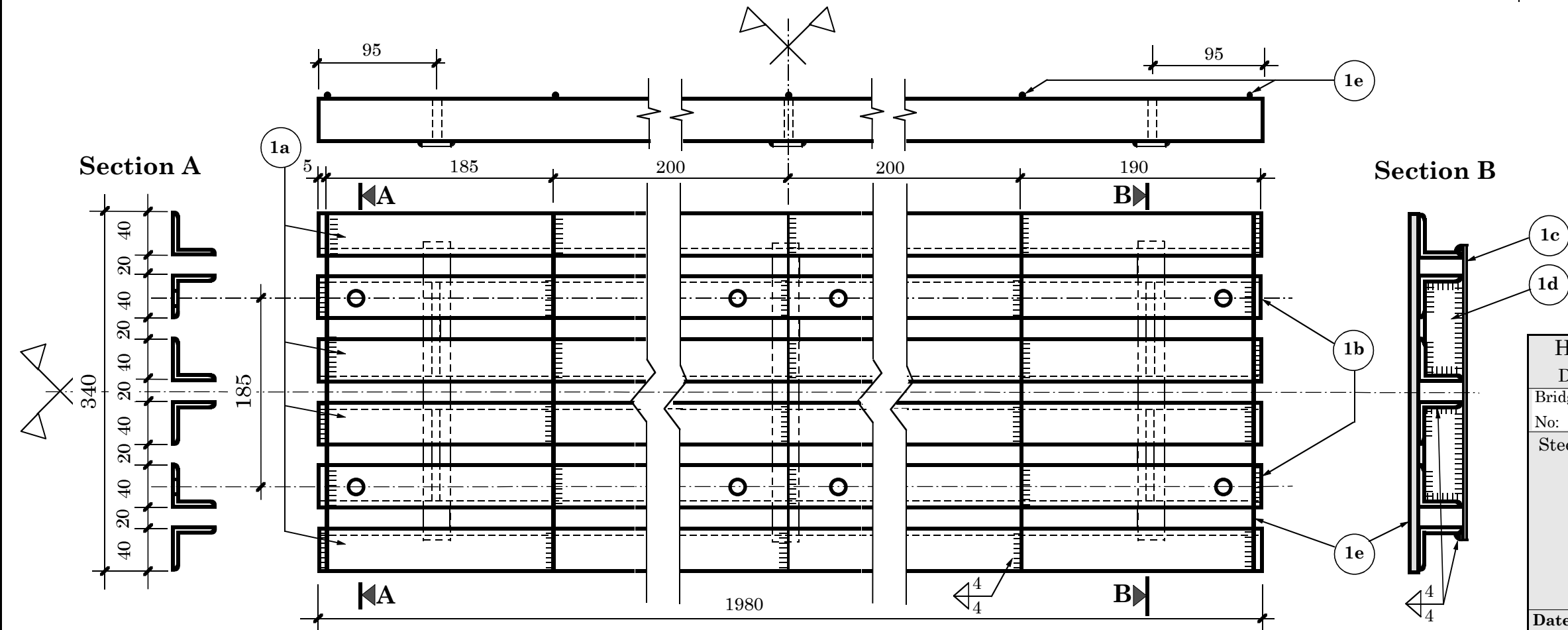
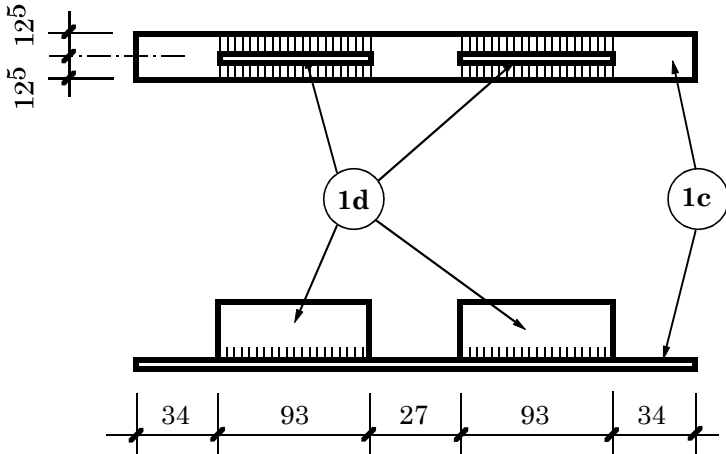
Specifications :
 All structural steel must comply with:
 IS 226 - 1975 for structural steel
 IS 800 - 1984 for general construction in steel

All sharp corners are to be grinded off before galvanization.

All steelparts must be **hot dip galvanized** acc. to:
 IS 2629 & 2633, min thickness = 80 μ m


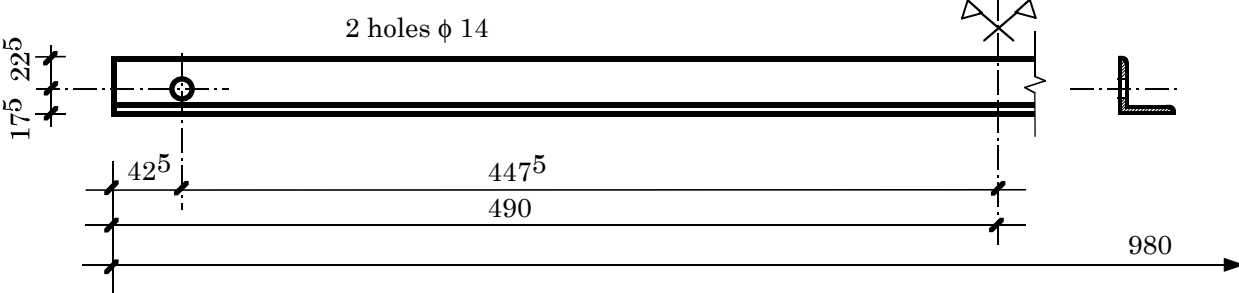
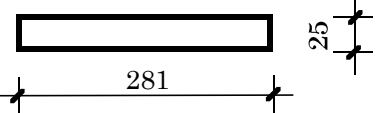
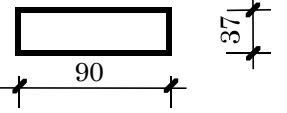
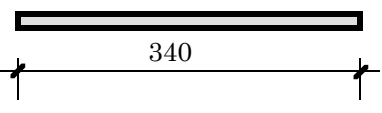
For obtaining uniformity, the use of templates and jigs is mandatory

Welding Detail of Part no. 1c & 1d



<i>*Required Nos of Pannels in [m]</i>	
70 cm walkway	= Span - 1.20
106 cm walkway	for D - Type = 1.5 x (Span - 1.20)
106 cm walkway	for N - Type = 1.5 x (Span - 2.80)

HMG / Ministry of Local Development	
DoLIDAR / Short SpanTrail Bridge Standard	
Bridge Name:	Span:
No:	
Steel Drawing:	
Steeldeck Standard Panel (for all Bridge types) length = 198 cm / width = 34 cm	
*Nos required: <input type="text"/>	
Date : Nov. 05, 2001	Drawing No. 08A

Part No.	Section [mm]	Quantity [nos]	Working Drawing	Weight	
				kg / pc	total kg
1	Angle 40/40/3 -980	4		1.80	7.20
	Angle 40/40/3 -980	2		1.80	3.60
	Flat 25/3 l = 281	2		0.165	0.33
	Flat 37/3 l = 90	4		0.078	0.31
	RI - Bar f 8 - 340	6		0.134	0.80
Total Transportation Weight = 12.71 kg			Total Structural Steel = Steel to be galvanized :		12.24

Specifications :

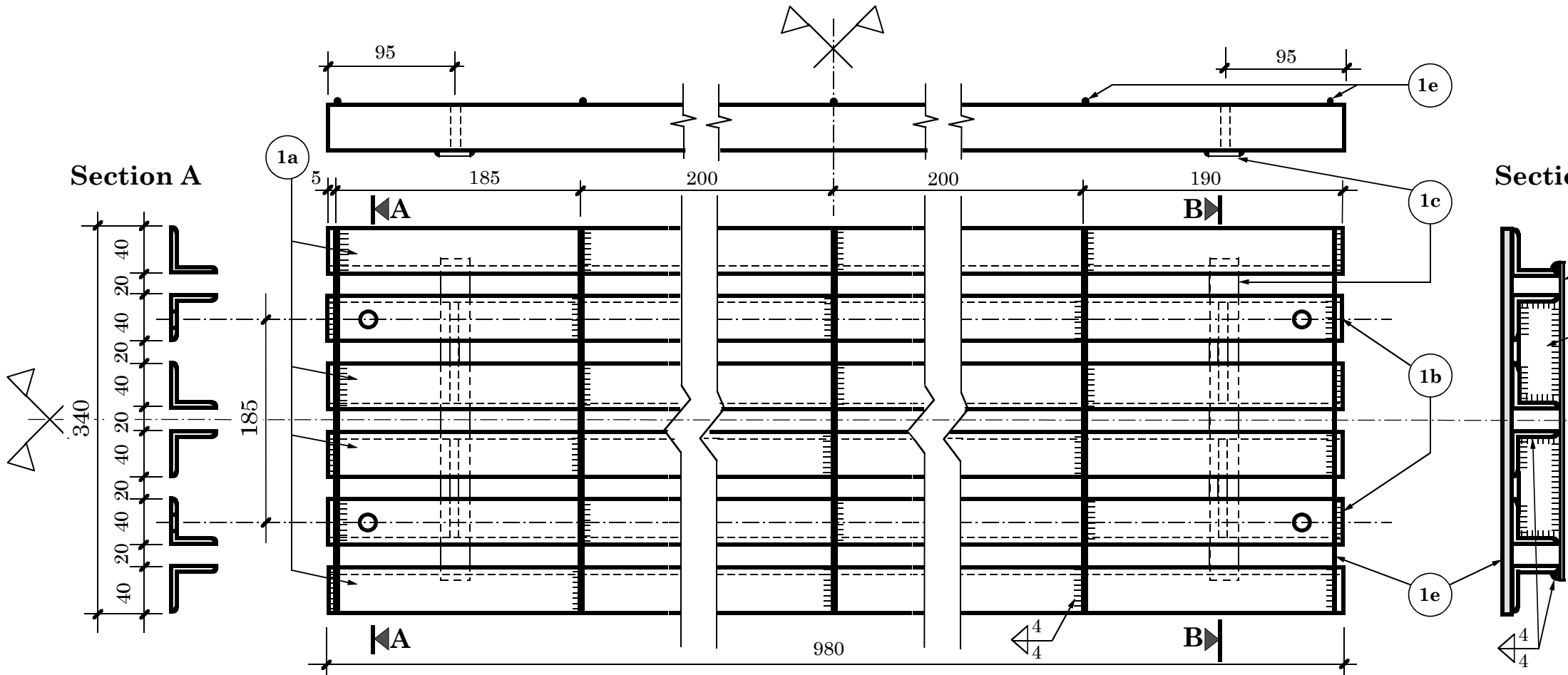
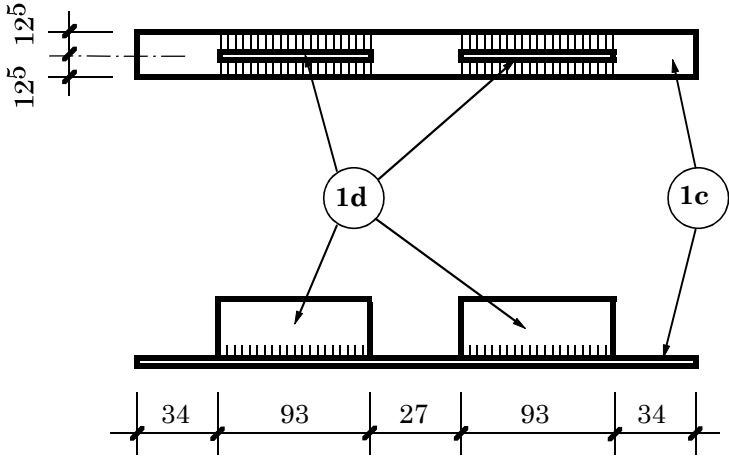
All structural steel must comply with:
 IS 226 - 1975 for structural steel
 IS 800 - 1984 for general construction in steel

All sharp corners are to be grinded off before galvanization

All steelparts must be **hot dip galvanized** acc. to:
 IS 2629 & 2633, min thickness = 80 μ m

For obtaining uniformity, the use of templates and jigs is mandatory

Welding Detail of Part no. 1c & 1d



Section B

**Required Nos of Pannel
for one Bridge:
1 piece*

HMG / Ministry of Local Development	
DoLIDAR / Short SpanTrail Bridge Standard	
Bridge Name:	Span:
No:	
Steel Drawing:	
Steeldeck Standard Half Panel (for all Bridge types) length = 98 cm / width = 34 cm	
*Nos required:	1
Date : Nov. 05, 2001	Drawing No. 09A

Part No.		Section [mm]	Quantity [nos]	Working Drawing	Weight	
					kg / pc	total kg
1	a	Angle 40/40/3 -2230	4		4.01	16.04
	b	Angle 40/40/3 -2230 Hot rolled ref. to 811 and 808	2		4.03	8.06
	c	Flat 25/3 l = 281	10		0.165	1.65
	d	Flat 37/3 l = 90	20		0.078	1.56
	e	RI - Bar f 8 - 340	10		0.134	1.34
Total Transportation Weight = 29.60 kg			Total Structural Steel = Steel to be galvanized:			28.49

Specifications :

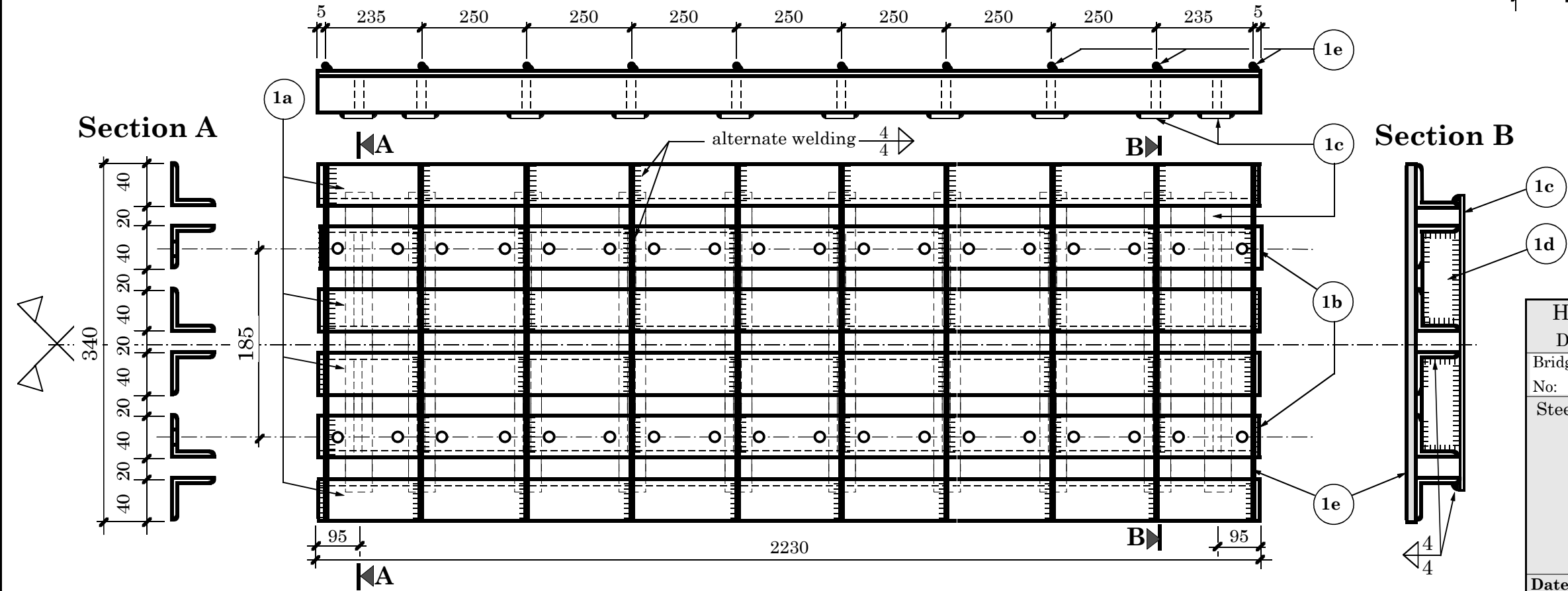
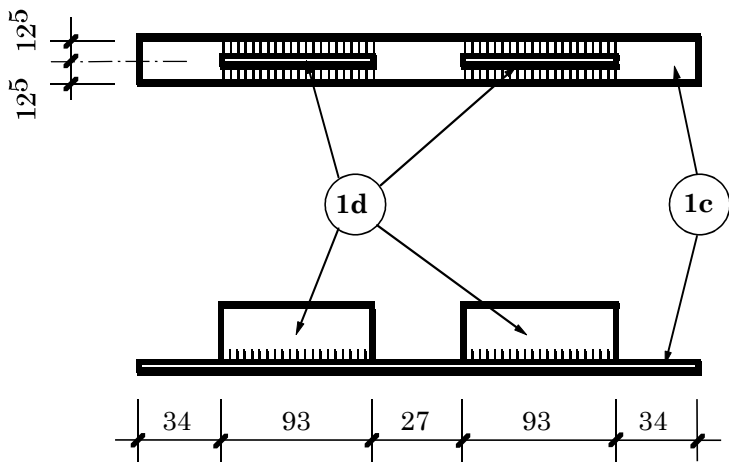
All structural steel must comply with:
 IS 226 - 1975 for structural steel
 IS 800 - 1984 for general construction in steel

All sharp corners are to be grinded off before galvanization

All steelparts must be **hot dip galvanized** acc. to:
 IS 2629 & 2633, min thickness = 80 μ m

For obtaining uniformity, the use of templates and jigs is mandatory

Welding Detail of Part no. 1c & 1d



<i>*Required Nos of Pannels:</i>	
70 cm walkway	2 pieces
106 cm walkway	3 pieces

HMG / Ministry of Local Development	
DoLIDAR / Short SpanTrail Bridge Standard	
Bridge Name:	
No:	Span:
Steel Drawing:	
Steeldeck Special Panel (for all Bridge types) length = 223 cm / width = 34 cm (final length to be cut at the site)	
*Nos required: <input type="text"/>	
Date : Nov. 05, 2001	Drawing No. 10A