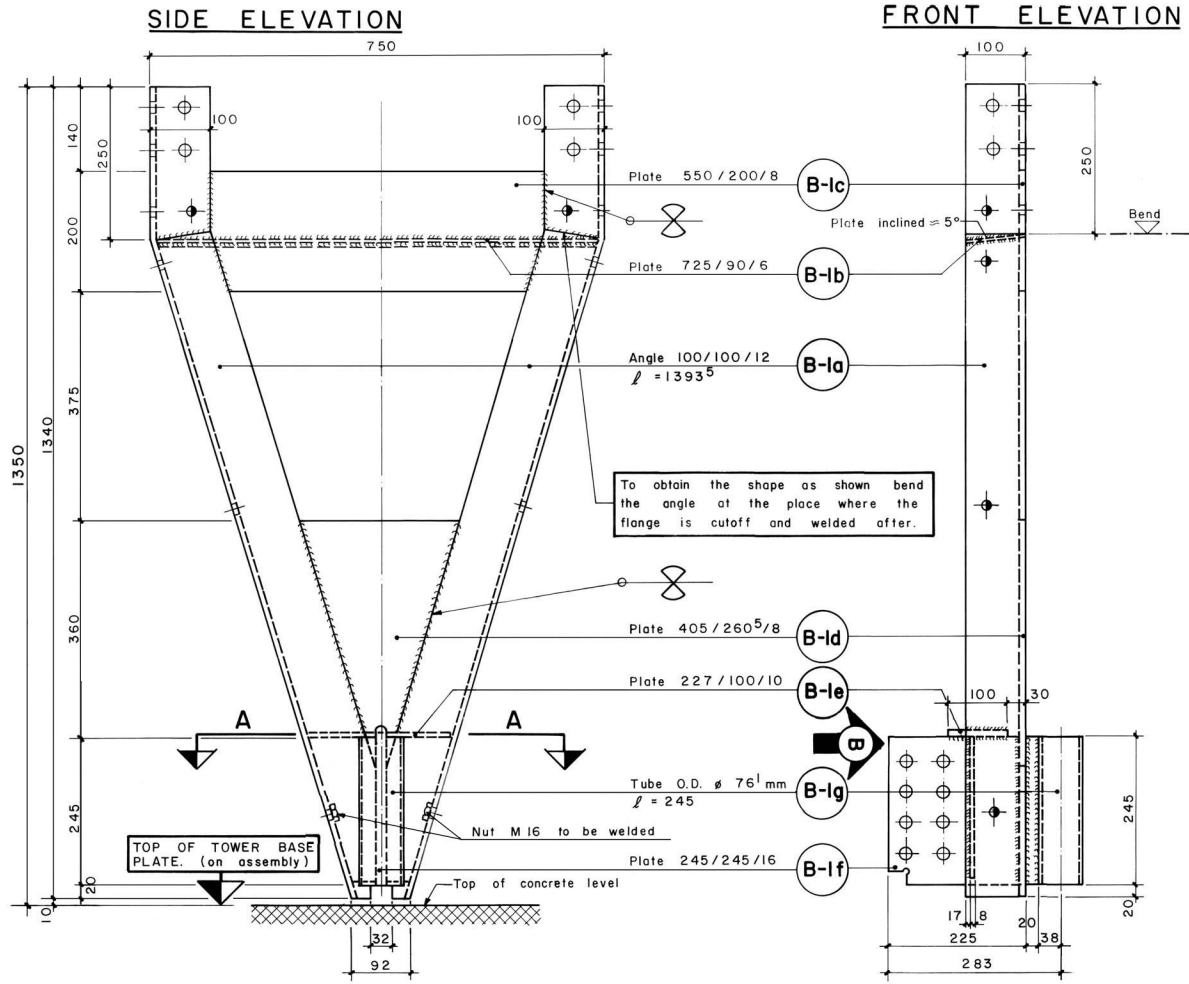
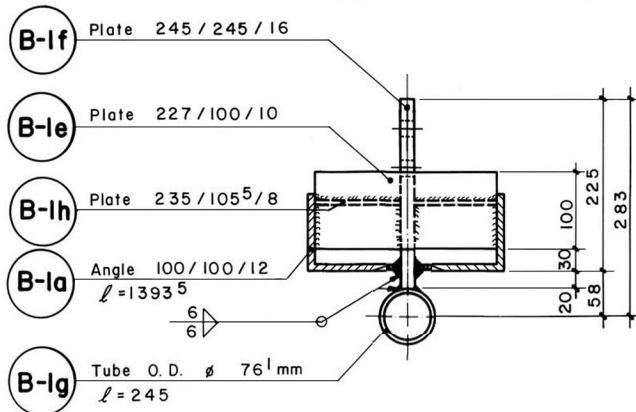


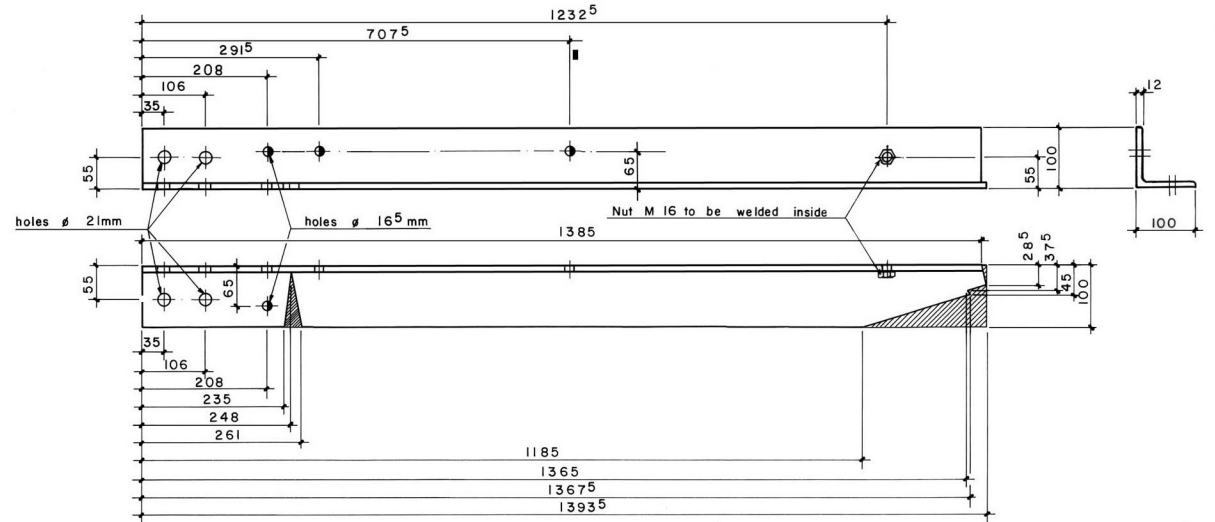
WELDING DETAIL OF PART B-I ( a - h )



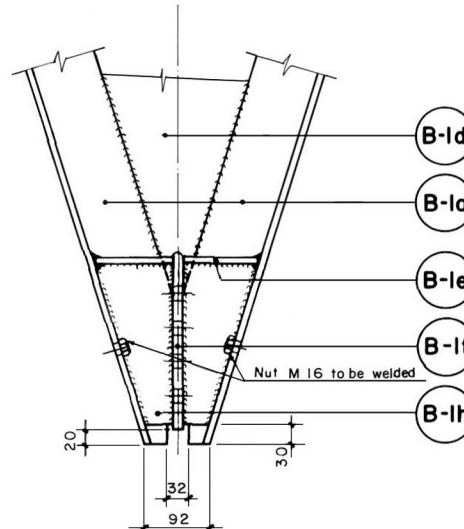
PLAN AT A-A



DETAIL OF PART B-1a



VIEW "B"



NOTES :

4 holes $\phi$ 21mm, 5 holes $\phi$ 16 <sup>5</sup> mm
As shown - 4 nos, Opposite hand - 4 nos.
Cutoff the portion shown hatched in the drawing.