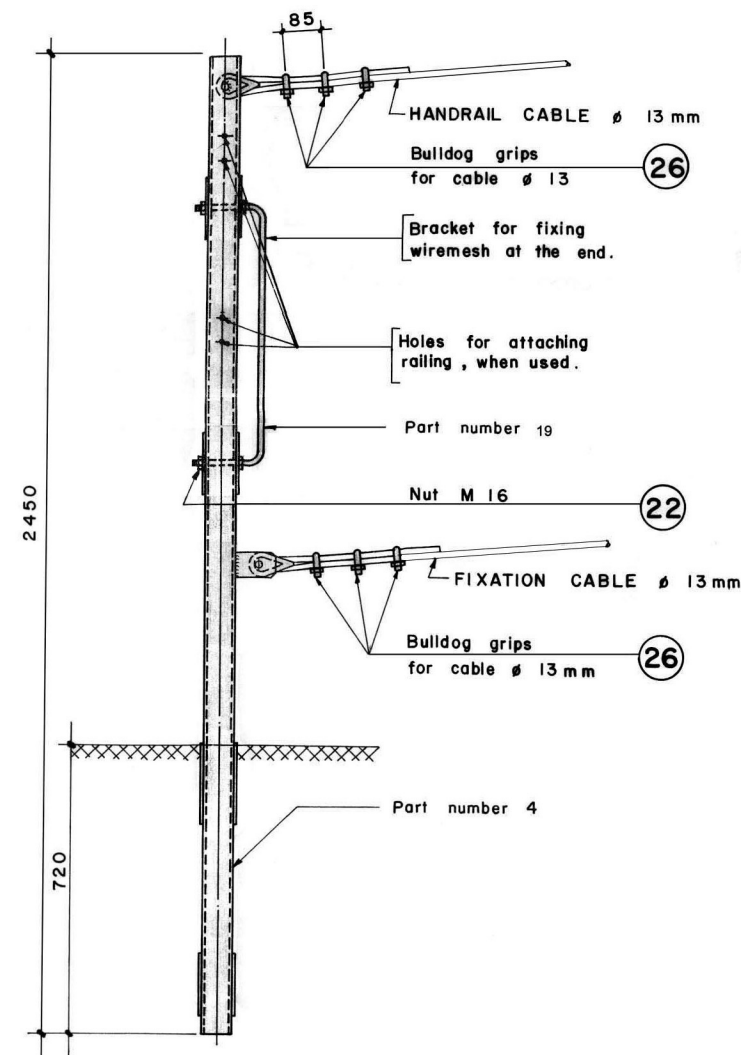
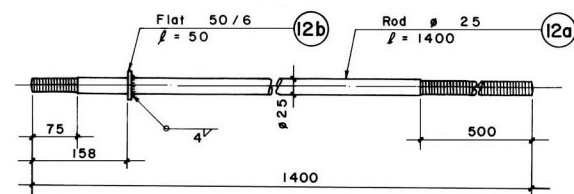


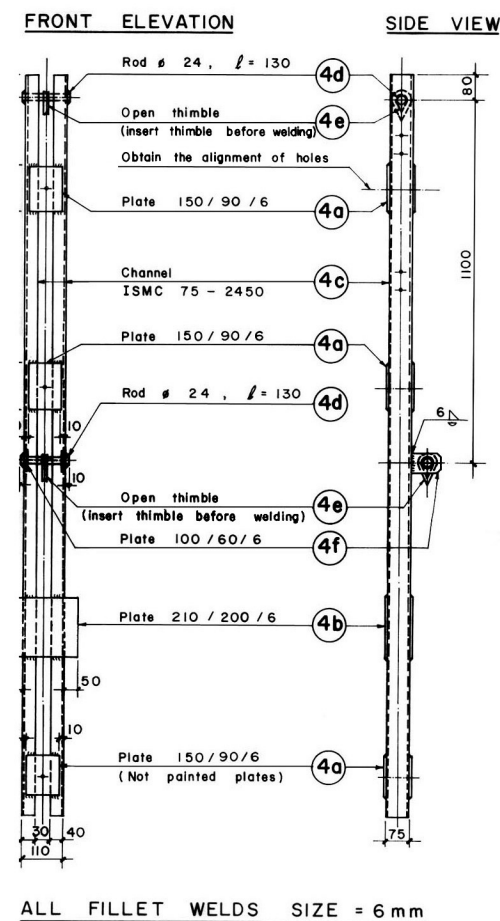
HANDRAIL AND FIXATION
CABLE ANCHORAGE



WELDING DETAIL OF PART 12



WELDING DETAIL OF PART 4



NOTES :

- 1) All nuts have to be retightened after erection.
- 2) All nongalvanized threads have to be painted in site with coaltar after retightening of the nuts.
- 3) All steel parts have to be painted with final coat after bridge erection, Only if not galvanized.
- 4) To obtain uniformity, use of templates and jigs is mandatory for haling, bending and welding of assembly.
- 5) All parts or bundles and packages with identical parts have to be labelled or marked with the respective part number by the workshop.

Serial number	Item	Total weight (kg)
1	Structural Steel	344.73
2	Screw, bolts, nuts & washers	5.04
3	Reinforcement steel Part nos. 29 - 34 Part nos. 35 - 39 Total	73.26
4	Part nos. 1 - 34 Part nos. 35 - 39 Total	423.03
Total 1+2+3+4		845.80

		(Pieces)
Thimbles for Cable 13, (26) mm	4	(2)
Bulldog grips for cable 13, (26) mm	13	(10)

TOTAL TRANSPORTATION WEIGHT		
Part nos. 1 - 34	445.28	kg
Part nos. 35 - 39	...	kg
Total	...	kg

MoLD / DoLIDAR / Trail Bridge Section
Long Span Trail Bridge Standard

Bridge No: Name:

Span:

Working & Assembly Drawing :

Walkway & Tower Anchorage

Spanning cable 26 mm
Capacity 260 kN
Tower c/c₁ = 3.50 m ; c/c₂ = 38.3 cm

Units : 1 Unit = Steel parts for one block

Date: August 2004

Drawing No. 90