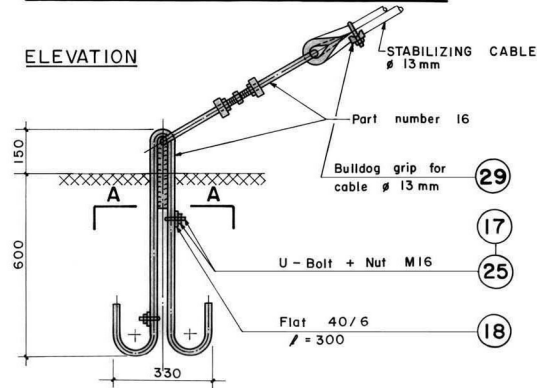
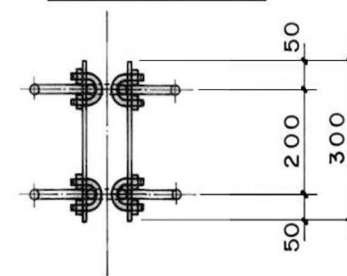


# STABILIZING CABLE ANCHORAGE



## SECTION A-A

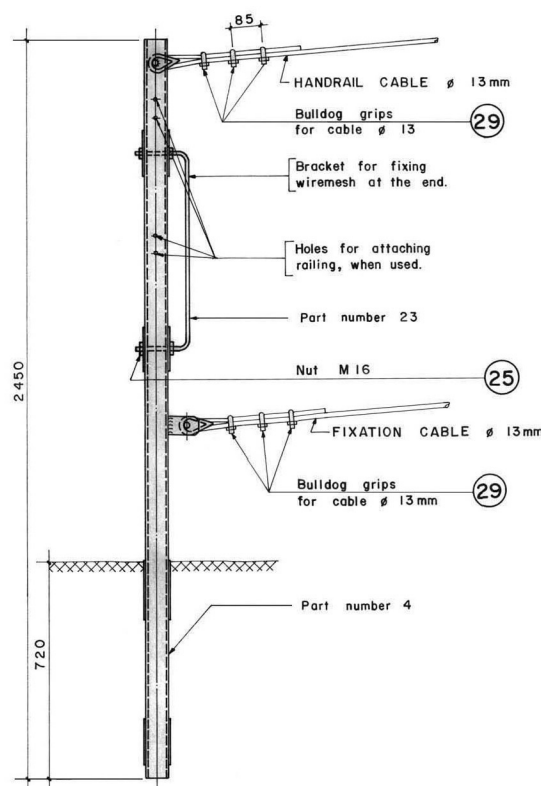


### NOTES :

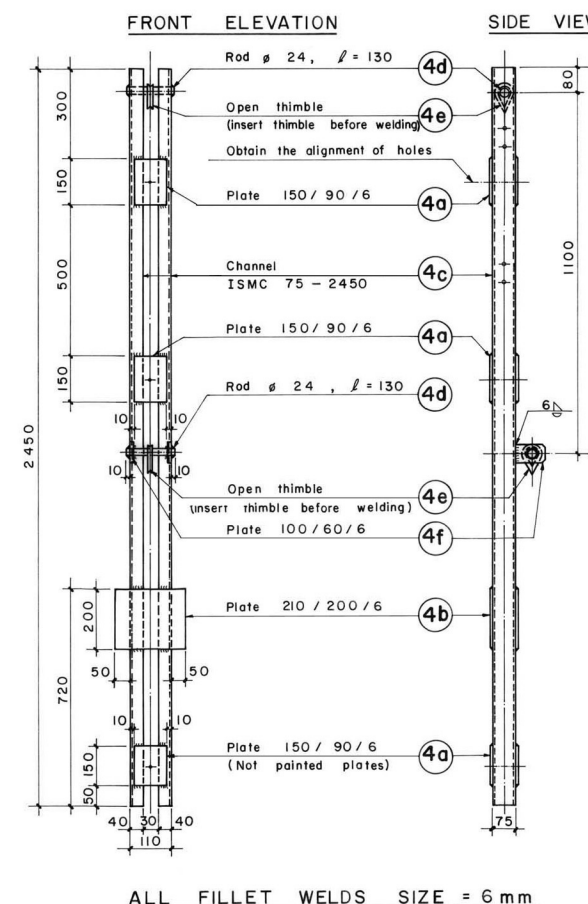
- 1) All nuts have to be retightened after erection.
- 2) All nongalvanized threads have to be painted in site with coaltar after retightening of the nuts.
- 3) All steel parts have to be painted with final coat after bridge erection, Only if not galvanized.
- 4) To obtain uniformity, use of templates and jigs is mandatory for holing, bending and welding of assembly.
- 5) All parts or bundles and packages with identical parts have to be labelled or marked with the respective part number by the workshop.

Serial number	Item	Total weight (kg)
1	Structural steel	493.87
2	Screws , bolts , nuts , washers	15.75
3	Reinforcement steel Part nos. 32 - 37 Part nos. 38 - 42 Total	85.86 ... .. ... ..
4	Part nos. 1 - 37 Part nos. 38 - 42 Total	... .. ... .. ... ..
Total 1 + 2 3 + 4		595.48

# HANDRAIL AND FIXATION CABLE ANCHORAGE



## WELDING DETAIL OF PART 4



	(Pieces)
Thimbles for Cable Ø 13, 26 (32) mm	8, 2 (2)
Bulldog grips for cable Ø 13, 26 (32) mm	25, 10 (12)

TOTAL TRANSPORTATION WEIGHT	
Part nos. (1 - 37)	... ..
For cable Ø 26	622.95
For cable Ø 32	629.75
Part nos. (38 - 42)	... ..
Total	... ..

## MoLD / DoLIDAR / Trail Bridge Section Long Span Trail Bridge Standard

Bridge No: Name:

Span:

Working & Assembly Drawing :

## Walkway & Tower Anchorage

Spanning cable Ø 26 mm  
Capacity 260 kN  
Tower c/c<sub>1</sub> = 3 50 m ; c/c<sub>2</sub> = 38.3 cm

Units : ..... 1 Unit ≡ Steel parts for one block

Date: August 2004

Drawing No. 91