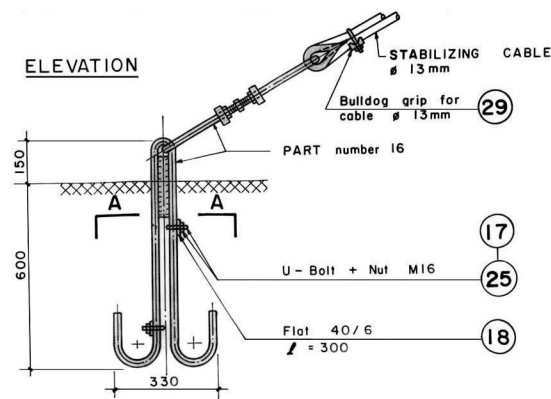
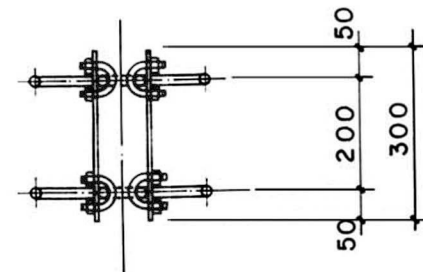


STABILIZING CABLE ANCHORAGE



SECTION A-A



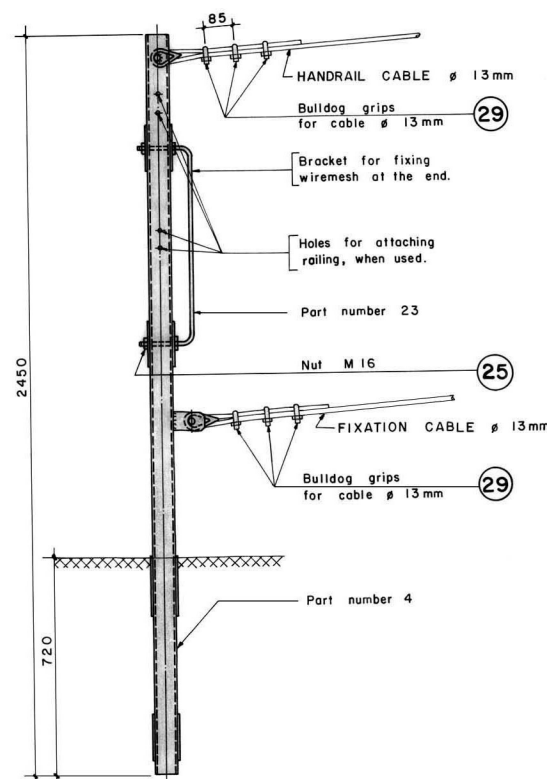
NOTES :

- 1) All nuts have to be retightened after erection.
- 2) All nongalvanized threads have to be painted in site with coaltar after retightening of the nuts.
- 3) All steel parts have to be painted with final coat after bridge erection, only if not galvanized.
- 4) To obtain uniformity, use of templates and jigs is mandatory for holing, bending and welding of assembly.
- 5) All parts or bundles and packages with identical parts have to be labelled or marked with the respective part number by the workshop.

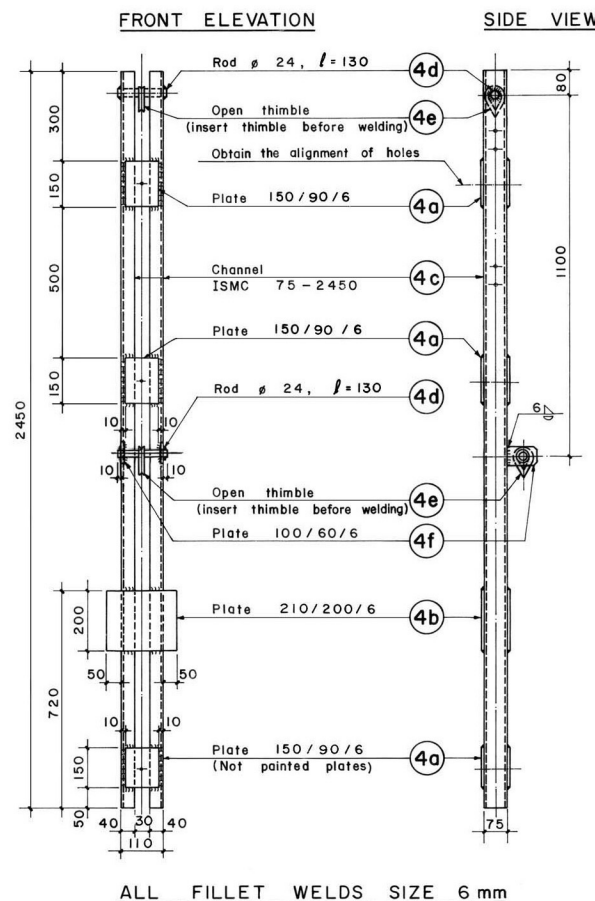
Serial number	Item	Total weight (kg)
1	Structural steel	521.67
2	Screws, bolts, nuts, washers	23.07
3	Reinforcement steel Part nos. 32 - 37	206.59
	Part nos. 38 - 42	...
	Total	...
4	Part nos. 1 - 37	...
	Part nos. 38 - 42	...
	Total	...
Total 1 + 2 + 3 + 4		751.33

	(Pieces)
Thimbles for Cable Ø 13,26 (32) mm	8,2 (2)
Bulldog grips for cable Ø 13,26 (32) mm	25,10 (12)

HANDRAIL AND FIXATION CABLE ANCHORAGE



WELDING DETAIL OF PART 4



TOTAL TRANSPORTATION WEIGHT	
Part nos. 1 - 37	
For Span cable Ø 26 mm	786.53
For span cable Ø 32 mm	793.33
Part nos. 38 - 42	...
Total	...

MoLD / DoLIDAR / Trail Bridge Section Long Span Trail Bridge Standard	
Bridge No:	Name:
Span:	
Working & Assembly Drawing :	
Walkway & Tower Anchorage	
Spanning cable Ø <input type="text"/> mm (26 / 32 mm)	
Capacity : 390 kN	
Tower : c/c ₁ = 4.00 m ; c/c ₂ = 55 cm	
Units :	1 Unit ≡ Steel parts for one block
Date: August 2004	Drawing No. 92