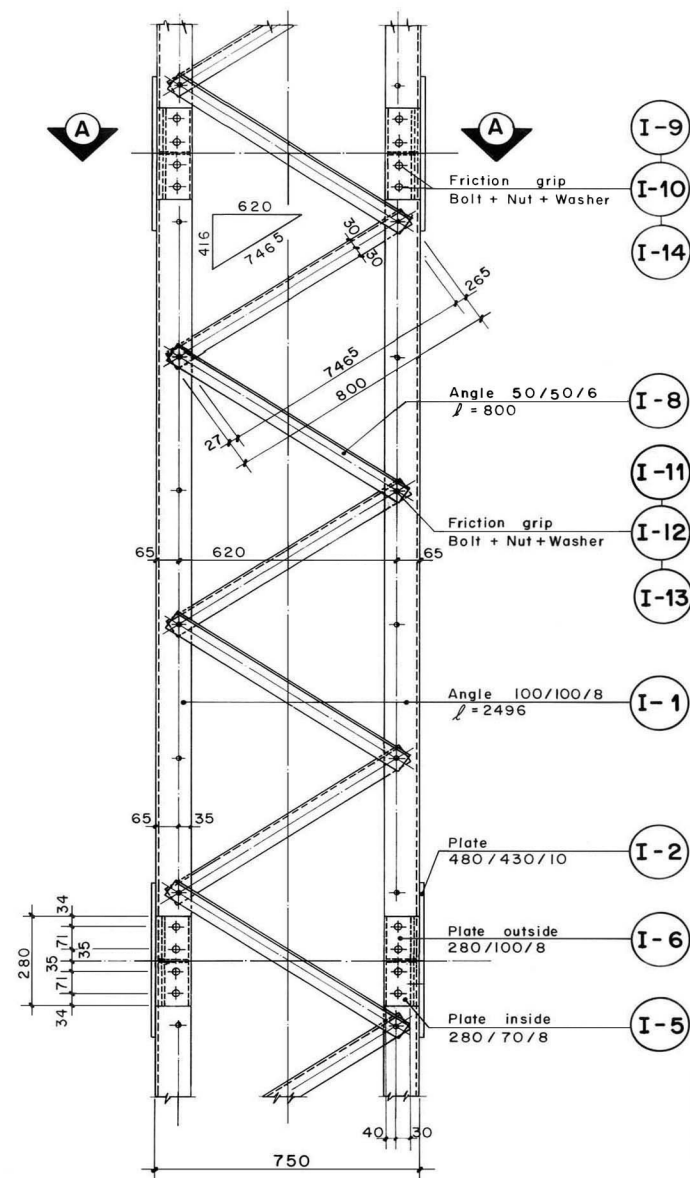
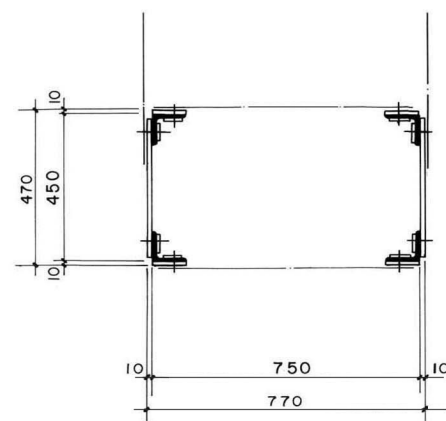


**SIDE ELEVATION**



**SECTION A-A**



**NOTES :**

- 1) To obtain uniformity , use of templates and jigs is mandatory for holing bending and welding of assembly .
- 2) All parts or bundles and packages with identical parts have to be labelled or marked with the respective part number by the workshop.
- 3) \*Friction grip bolt, nuts and washers\* are mentioned in this drawing. However \*Galvanized black grade hexagonal bolts and nuts (IS 1363, property class 4.6) and washers (IS 6610)\* can be supplied.

Serial number	Item	Total weight (kg)
1	Structural steel	643.34
2	Screws, bolts, nuts, washers	41.55
Total 1+2		684.89

TOTAL TRANSPORTATION WEIGHT : 699.48 kg

MoLD / DoLIDAR / Trail Bridge Section Long Span Trail Bridge Standard	
Bridge No:	Name:
Span:	
Working & Assembly Drawing :	
<b>Tower Intermediate Element</b>	
Standard section : 450 x 750 mm	
Effective height : 2496 mm	
Angle : 100/100/8 mm	
Units : .....	Units required refer to Assembly dwg.
Date: August 2004	Drawing No. 113