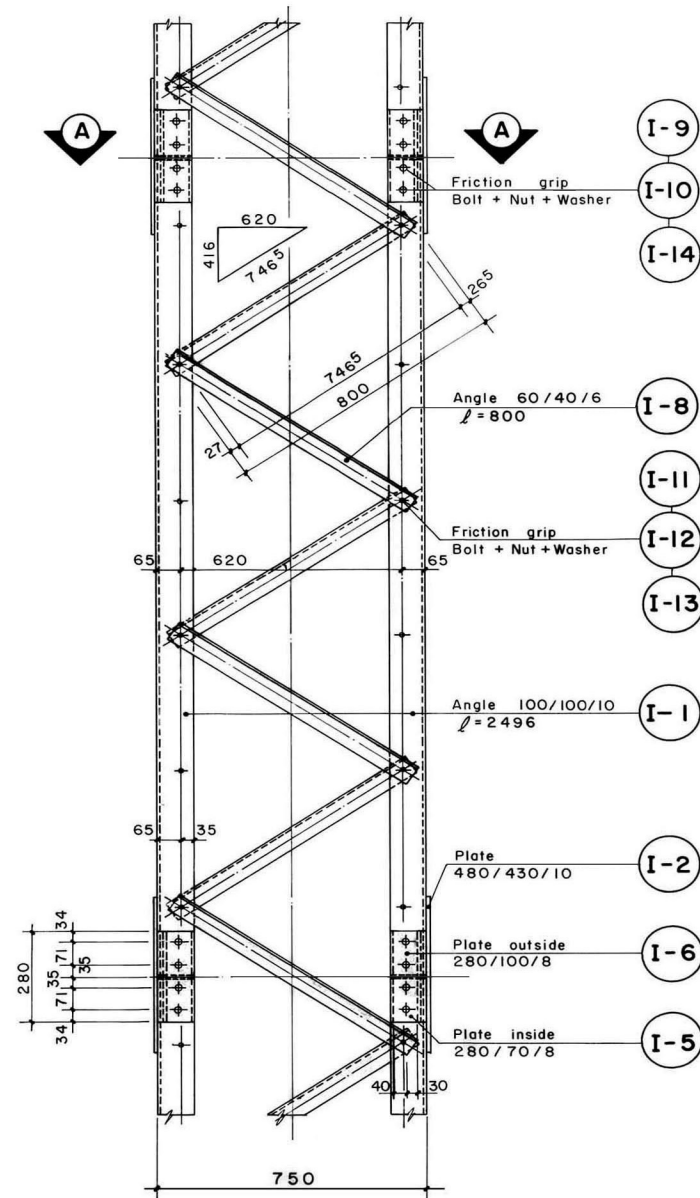
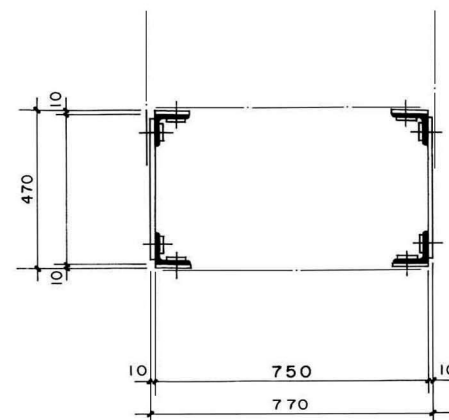


SIDE ELEVATION



SECTION A-A



NOTES :

- 1) To obtain uniformity, use of templates and jigs is mandatory for holing bending and welding of assembly.
- 2) All parts or bundles and packages with identical parts have to be labelled or marked with the respective part number by the workshop.
- 3) "Friction grip bolt, nuts and washers" are mentioned in this drawing. However "Galvanized black grade hexagonal bolts and nuts (IS 1363, property class 4.6) and washers (IS 6610)" can be supplied.

Serial number	Item	Total weight (kg)
1	Structural steel	698.54
2	Screws, bolts, nuts, washers	41.55
Total 1 + 2		740.09

TOTAL TRANSPORTATION WEIGHT : 754.68 kg

**MoLD / DoLIDAR / Trail Bridge Section
Long Span Trail Bridge Standard**

Bridge No: Name:

Span:

Working & Assembly Drawing :

Tower Intermediate Element

Standard section : 450 x 900 mm

Effective height : 2496 mm

Angle : 110 / 110 / 12 mm

Units : Units required refer to Assembly dwg.

Date: August 2004

Drawing No. 114