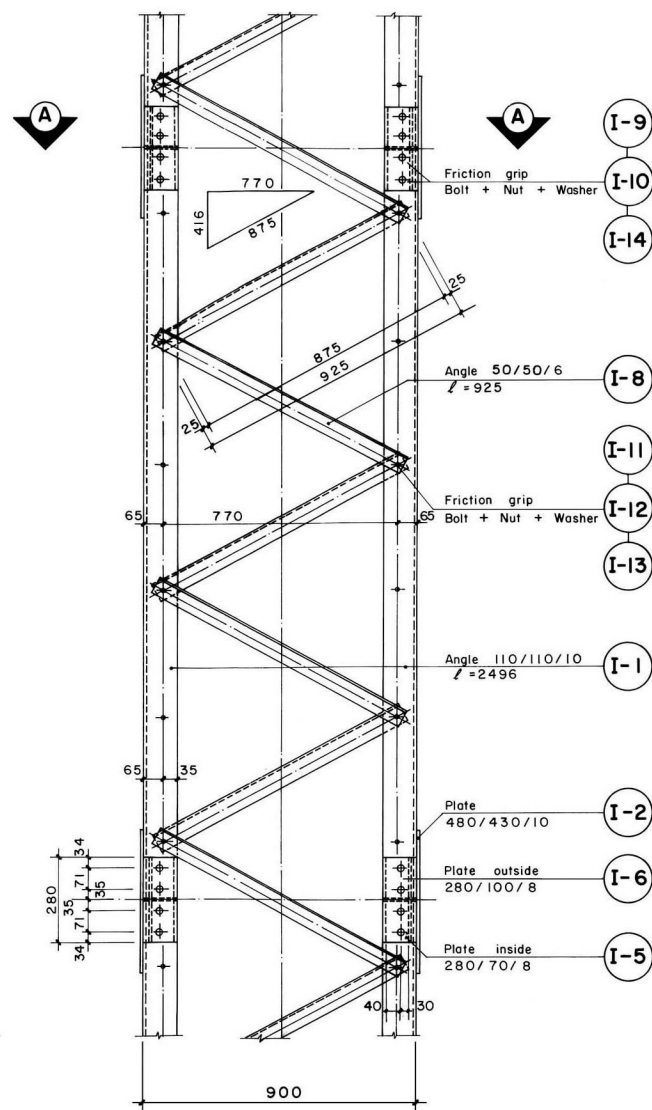
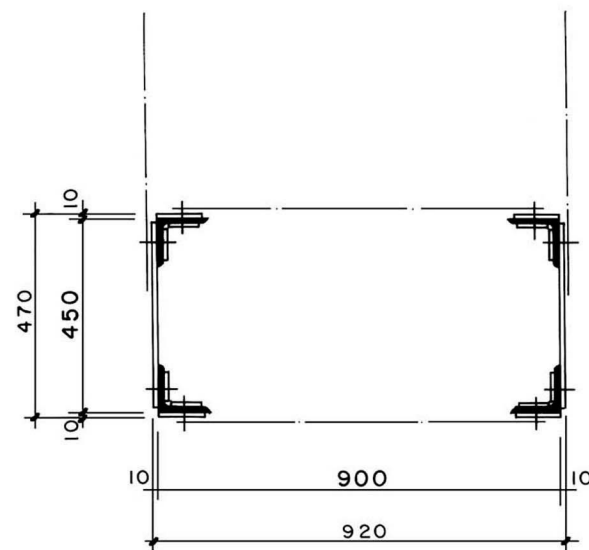


SIDE ELEVATION



SECTION A-A



- NOTES :**
- 1) To obtain uniformity ,use of templates and jigs is mandatory for haling bending and welding of assembly .
 - 2) All parts or bundles and packages with identical parts have to be labelled or marked with the respective part number by the workshop.
 - 3) "Friction grip bolt, nuts and washers" are mentioned in this drawing. However "Galvanized black grade hexagonal bolts and nuts (IS 1363, property class 4-6 for M 20 & 6-6 for M 16) and washer (IS 6610)" can be supplied.

Serial number	Item	Total weight (kg)
1	Structural steel	749.00
2	Screws, bolts, nuts , washers	41.55
Total 1 + 2		790.55

TOTAL TRANSPORTATION WEIGHT : 805.88 kg

MoLD / DoLIDAR / Trail Bridge Section Long Span Trail Bridge Standard	
Bridge No:	Name:
Span:	
Working & Assembly Drawing :	
Tower Intermediate Element	
Standard section : 450 x 900 mm	
Effective height : 2496 mm	
Angle : 110/110/10 mm	
Units :	Units required refer to Assembly dwg.
Date: August 2004	Drawing No. 116