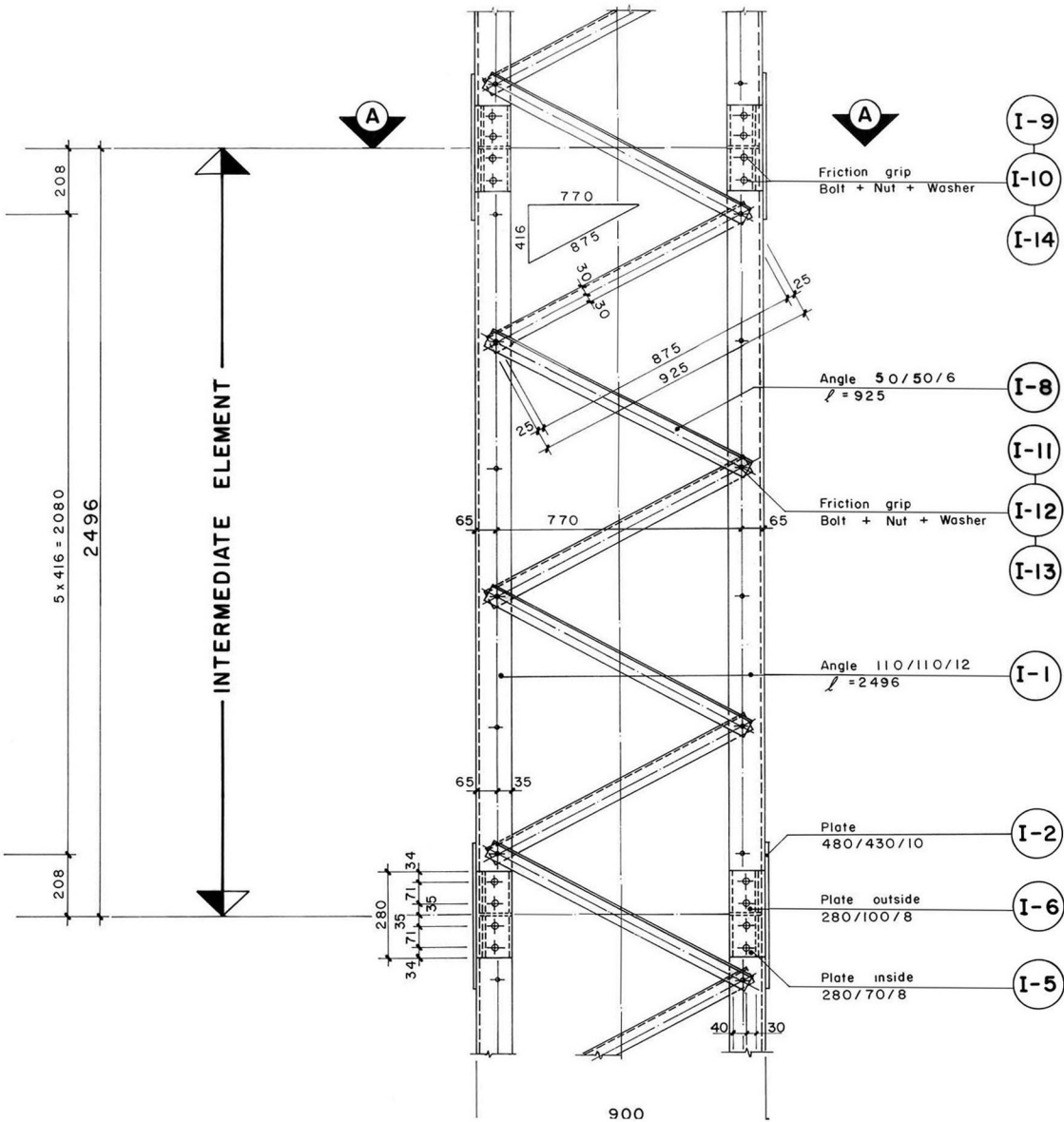
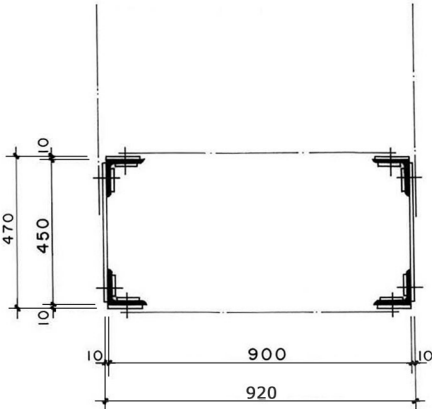


SIDE ELEVATION



SECTION A-A



- NOTES :
- 1) To obtain uniformity ,use of templates and jigs is mandatory for holing bending and welding of assembly .
 - 2) All parts or bundles and packages with identical parts have to be labelled or marked with the respective part number by the workshop.
 - 3) "Friction grip bolt, nuts and washers" are mentioned in this drawing. However Galvanized black grade hexagonal bolts and nuts (IS 1363, property class 4.6 for M20 and 6.6 for M16) and washers (IS 6610) can be supplied.

Serial number	Item	Total weight (kg)
1	Structural steel	814.14
2	Screws, bolts, nuts , washers	41.55
Total 1 + 2		855.69

TOTAL TRANSPORTATION WEIGHT : 867.02 kg

MoLD / DoLIDAR / Trail Bridge Section Long Span Trail Bridge Standard	
Bridge No:	Name:
Span:	
Working & Assembly Drawing :	
Tower Intermediate Element	
Standard section : 450 x 900 mm	
Effective height : 2496 mm	
Angle : 110 / 110 / 12 mm	
Units :	Units required refer to Assembly dwg.
Date: August 2004	Drawing No. 117