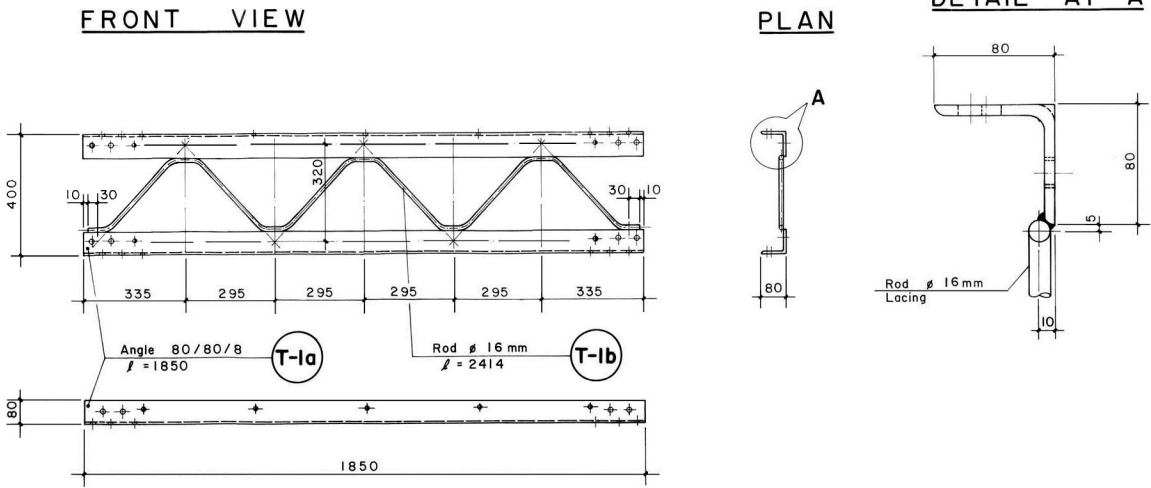


Part no	Section (mm)	Quantity	Working Drawing (Dimension in mm)	Length		Weight		Surface to be painted		Total weight (finished) Galvanized kg	Remarks
				single/pc mm	total m	kg/pc	total kg	m <sup>2</sup> /pc	total m <sup>2</sup>		
T-10	Friction grip bolt M 20 x 60 IS 3757 - 8.8	110		-	-	0.23	25.30				6 pcs. extra Ref: IS 3757 - 1972
T-11	Friction grip nut M 20 IS 6623 - 8	110		-	-	0.079	8.69				6 pcs. extra Ref: IS 6623 - 1972
T-12	Washer 'A' 21 IS 6649	110		-	-	0.021	2.31				6 pcs. extra Ref: IS 6649 - 1972
T-13	Friction grip bolt M 16 x 50 IS 3757 - 8.8	68		-	-	0.12	8.16				4 pcs. extra Ref: IS 3757 - 1972
T-14	Friction grip nut M 16 IS 6623-8	68		-	-	0.047	3.20				4 pcs. extra Ref: IS 6623 - 1972
T-15	Washer 'A' 17 IS 6649	68		-	-	0.014	0.95				4 pcs. extra Ref: IS 6649 - 1972
<b>TOTAL (T-1 to T-15)</b>						<b>479.14 kg</b>		<b>15.80 m<sup>2</sup></b>		<b>440.19 kg</b>	

Steel parts to be Galvanized :	430.56 kg	Hot Dip Galvanization : IS 2629 , IS 2633
Steel Parts to be painted :	15.80 m <sup>2</sup>	Weight of Zinc Coat : 0.61 kg / m <sup>2</sup>

TRANSPORT UNIT		
Weight of	part T-1 =	39.58 kg
Weight of	part T-3 =	36.50 kg
Weight of	part T-6 =	23.27 kg

## WELDING DETAIL OF PART T-1



## WELDING DETAIL OF PART T-3

