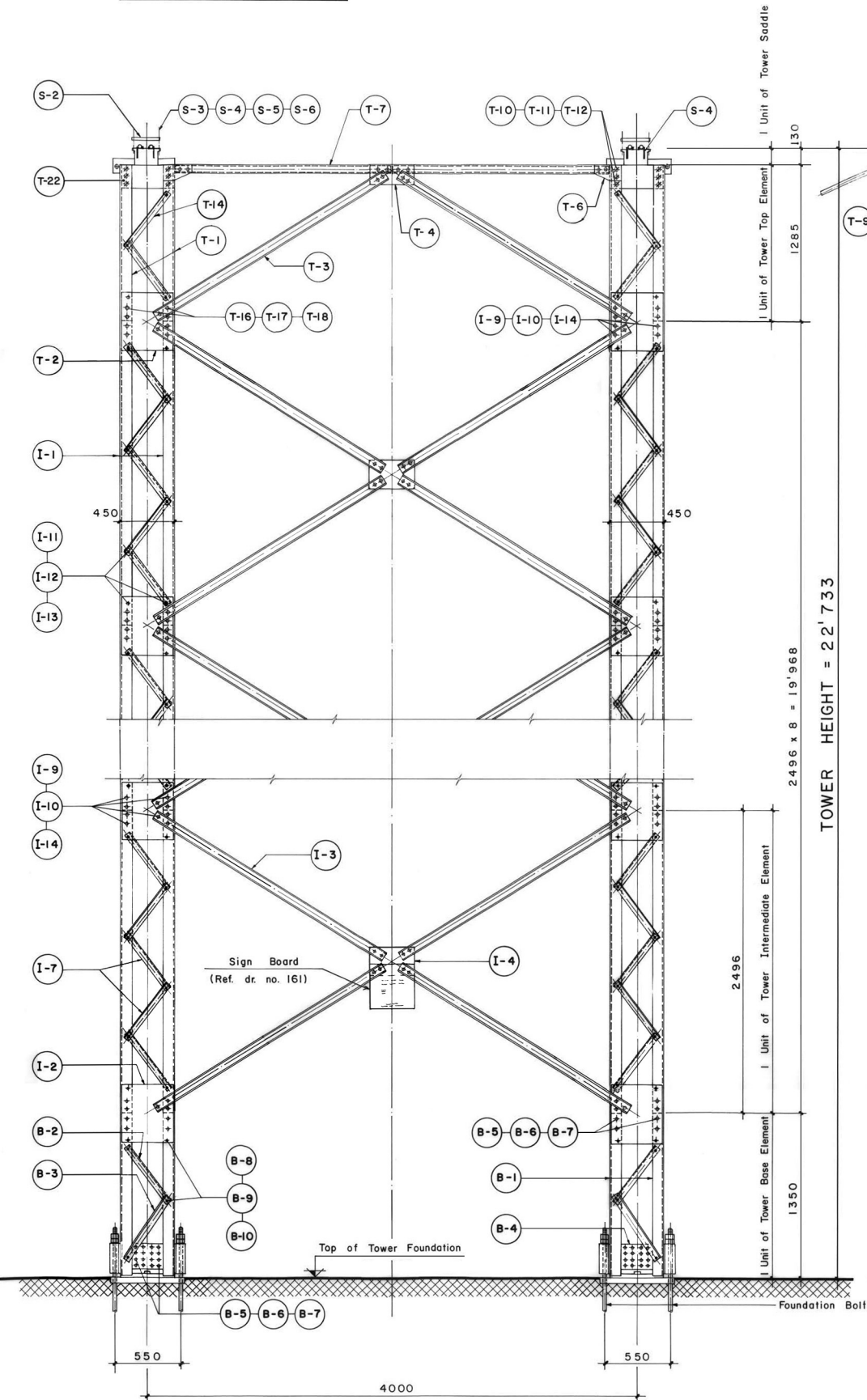
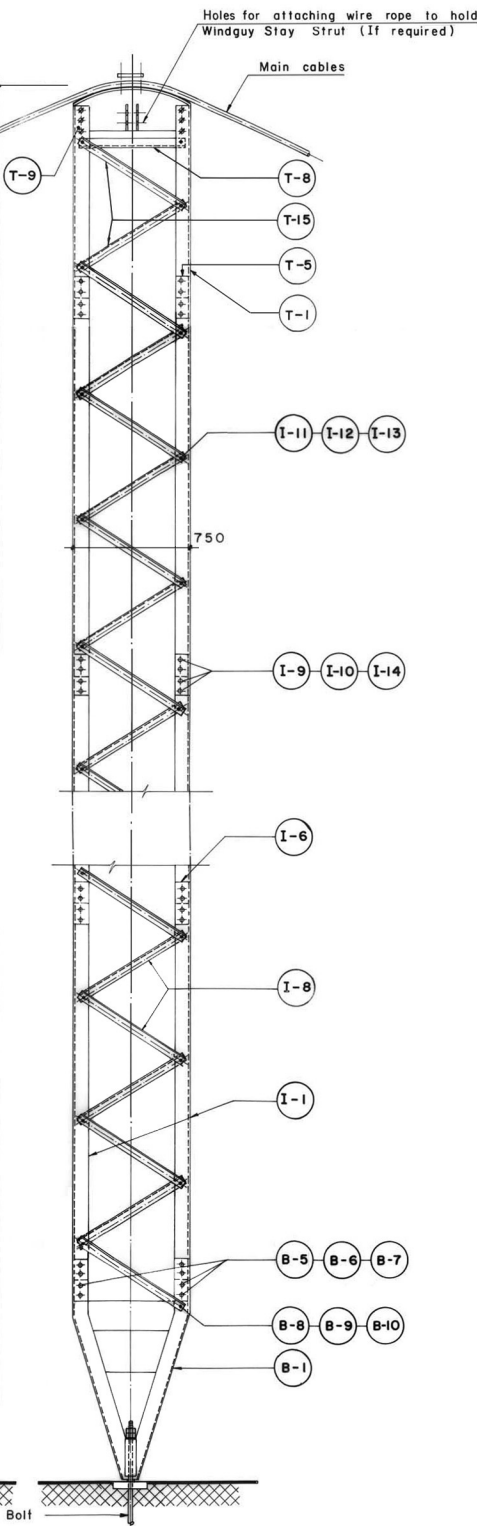


FRONT ELEVATION



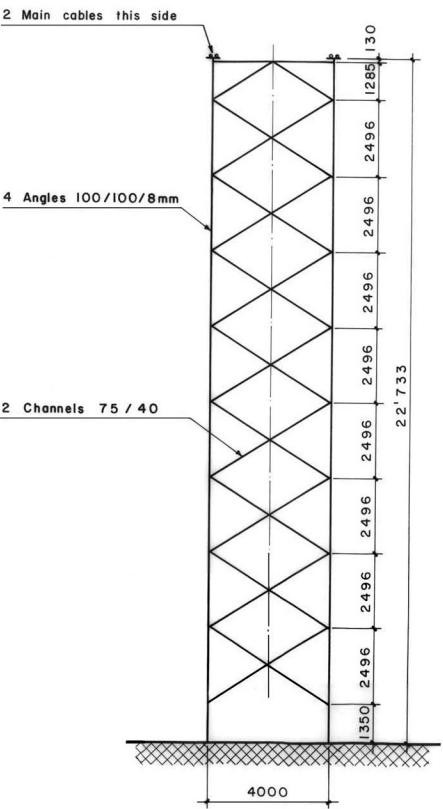
SIDE ELEVATION



REQUIREMENT FOR ONE TOWER:

Drawing Title	Drawing no.	Number of units required	Weight (kg)		Painting (m ²)		Weight (finished) Galvanized (kg)	
			per unit	total	per unit	total	per unit	total
Tower Base Element	103	1	299.86	299.86	8.84	8.84	272.72	272.72
Tower Intermediate Element	113	8	699.48	5595.84	23.94	191.52	657.93	5263.44
Tower Top Element	126	1	535.70	535.70	17.20	17.20	476.75	476.75
Tower Saddle	137	1	177.56	177.56	3.26	3.26	173.21	173.21
Sign Board	161	1	1.75	1.75	—	—	—	—
Grand Total			6610.71 kg		220.82 m ²		6186.12 kg	
	Summary of Friction Grip Bolt , Nut and Washer.							
	Bolt M16 X50, including Nut & Washer.						540 pc.	
	Bolt M20 X60, including Nut & Washer.						875 pc.	
	Bolt M24 X65, including Nut & Washer.						50 pc.	
	Bolt M20 X130, including Nut & Washer.						9 pc.	
	Total weight of Bolt, Nut, Washer.						422.81 kg.	
	Steel Parts To Be Galvanized.						6608.96 kg.	

GENERAL ARRANGEMENT



- NOTES:
- 1) All nongalvanized threads have to be painted in site with coaltar after retightening of the nuts.
 - 2) All steel parts have to be painted with final coat after bridge erection, Only if not Galvanized.
 - 3) All nuts have to be tightened to proper torque:—
ø 16mm : 20 mkg; ø 20mm : 40mkg.

TOTAL TRANSPORTATION WEIGHT : 6610.71 kg

MoLD / DoLIDAR / Trail Bridge Section	
Long Span Trail Bridge Standard	
Bridge No:	Name:
Span:	
Steel drawing :	
Assembly of Tower	
Tower height : 22.73 m	
Standard section : 450 x 750 mm	
Angle 100/100/8 mm	
4 (6) Main cables	
c/c ₁ = 4000 mm ; c/c ₂ = 550 mm	
Date: August 2004	Drawing No.152