

NOTES :

- 1) Wind the main cables 3 times around the drum before clamping.
- 2) Erect the deck before casting the third layer of reinforced concrete 1:2:4 (excluding wiremesh and fixation cable)
- 3) Do not allow persons to cross the bridge before casting and curing of the third layer of reinforced concrete 1:2:4
- 4) Required additional cable length for anchorage on one bank (from front of foundation):- Handrail cable: 3.30 m,
Main cables : for front drum cable: 13.20 m.
for other cables: 17.60 m.
- 5) Make rough construction and working joints.

Standard Quantities :

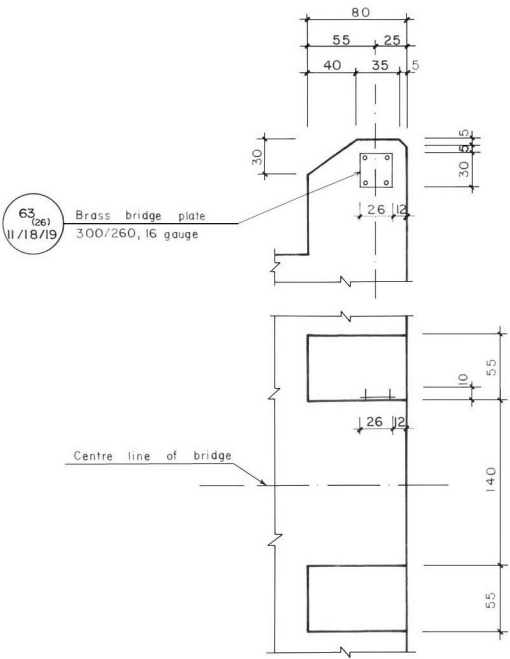
B=.....m. L=.....m. H₁ =.....m. H₂ =.....m.

hp =

	Vo Quantity (m ³)	Cement	
		Bags/m ³	No of bags
Reinforced concrete 1:2:4 Vo = 15.052 + 0.88 hp		6.40	
Plumb concrete 1:3:6 + 40% boulders Vo = L [(H ₁ + H ₂) $\frac{B}{2}$ - 0.12]		2.64	
Cement plaster 1:4 Vo = 0.025 L (B - 1.20) - 0.026		9.12	
Rubble masonry 1:6 Vo = (B L - 1.20 L - 16.25) 0.95		1.50	
Total volume: Vtotal = BL/2 (H ₁ + H ₂ + 1.95) - 1.29L + 0.88 hp - 0.412			
		No. of cement bags	

	Quantity
Formwork: F ₀ = (H ₁ + H ₂) (B + L) $\frac{1}{2}$ + 5.40 hp + 1.944	

DETAIL OF SIGN BOARD FIXATION



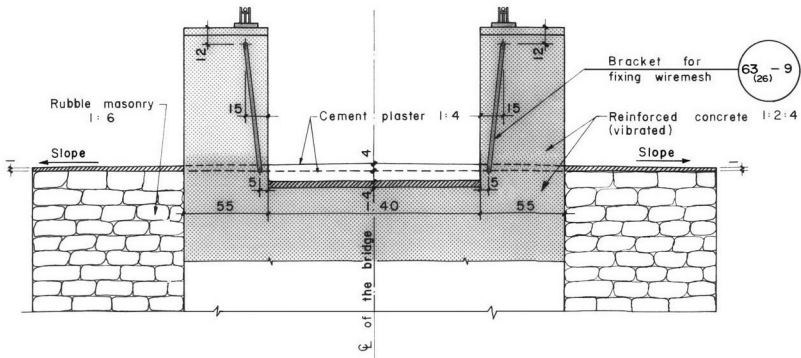
INSTRUCTIONS

- 1) Wrap whole plate in plastic.
- 2) Assemble bolts and nuts.
- 3) Attach assembled plate at inside of formwork, then cast in concrete.
- 4) Remove plastic after concrete setting.

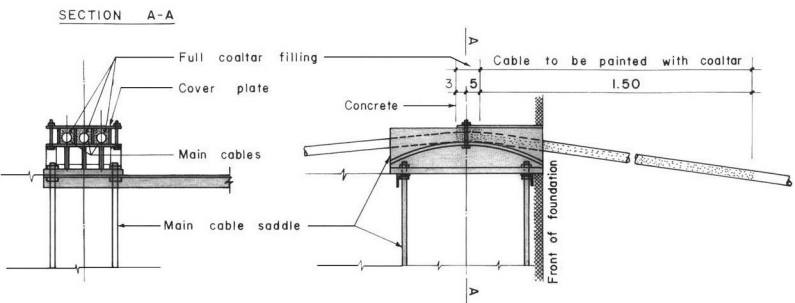
Limits for Dimensions :

	Minimum	Maximum
B	7.90	11.00
L	3.30	6.50
H ₁	2.00	4.50
H ₂	1.20	4.50

FRONT VIEW
(WITH PLASTER DETAIL)



DETAIL OF CABLE FITTING AND PROTECTION AT SADDLE



MoLD / DoLIDAR / Trail Bridge Section
Long Span Trail Bridge Standard

Bridge No: Name:

Span:

Structural Drawing :

Main Foundation on Soil

Related drawings : 62

6 Main cables \varnothing mm (36 / 40mm)

2 Handrail cables \varnothing 26 mm

2 Fixation cables \varnothing 13 mm

Date: August 2004

Drawing No. 62/1(26)