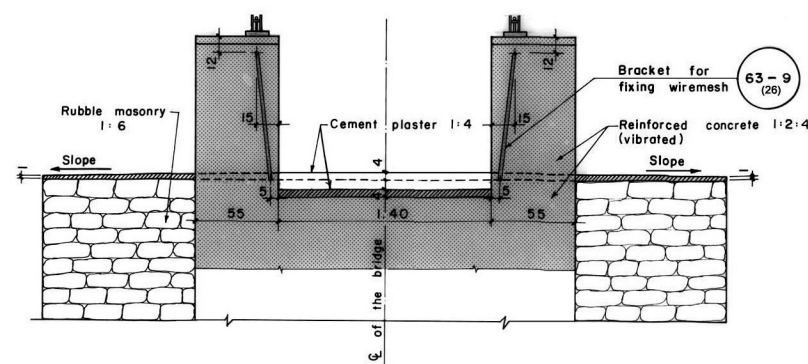
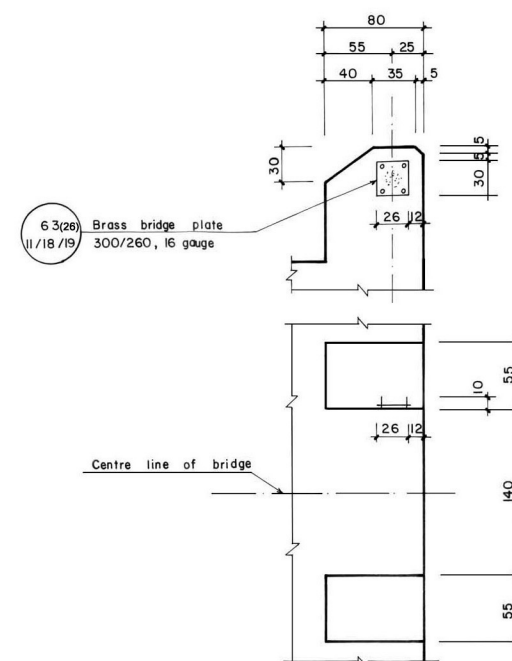


FRONT VIEW (WITH PLASTER DETAIL)



DETAIL OF SIGN BOARD FIXATION



NOTES :

- 1) Wind the main cables 3 times around the drum before clamping.
- 2) Erect the deck before casting the third layer of reinforced concrete 1:2:4 (excluding wiremesh and fixation cable)
- 3) Do not allow persons to cross the bridge before casting and curing of the third layer of reinforced concrete 1:2:4
- 4) Required additional cable length for anchorage on one bank (from front of foundation):- Handrail cable: 3.30m, Main cables: for front drum cable: 13.20m, for other cables: 17.60m.
- 5) Make rough construction and working joints.

Standard Quantities:

B =m. L =m. H₁ =m. H₂ =m

h_p =m.

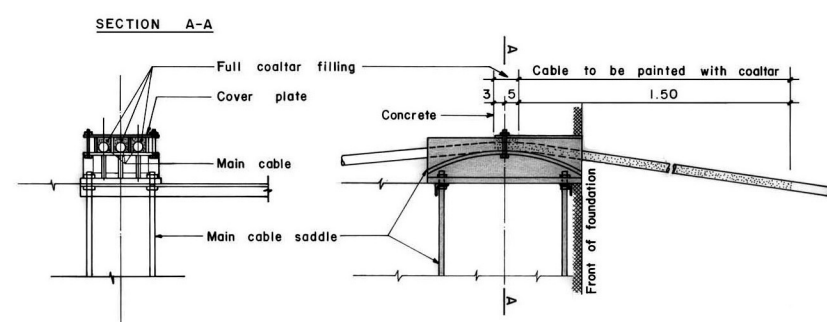
	Vo Quantity (m ³)	Cement	
		Bags/m ³	No. of bags
Reinforced concrete 1:2:4 Vo = 15.052 + 0.88 h _p	6.40
Cement plaster 1:4 Vo = 0.025 LB - 0.026	9.12
Rubble masonry 1:6 Vo = (BL - 16.25) 0.95	1.50
Plumb concrete 1:3:6 + 40% boulders Vo = $\frac{BL}{2} (H_1 + H_2)$	2.64
Total volume: V _{total} = $\frac{BL}{2} (H_1 + H_2 + 1.95) + 0.88h_p - 0.412$		
		No. of cement bags	

Formwork	Quantity
F ₀ = 5.40 h _p + 2.064

Limits for Dimensions :

	Minimum	Maximum
B	6.70	9.50
L	3.30	5.50
H ₁	2.00	4.50
H ₂	1.00	4.50

DETAIL OF CABLE FITTING AND PROTECTION AT SADDLE



INSTRUCTIONS

- 1) Wrap whole plate in plastic
- 2) Assemble bolts and nuts.
- 3) Attach assembled plate at innerside of formwork, then cast in concrete
- 4) Remove plastic after concrete setting.

MoLD / DoLIDAR / Trail Bridge Section Long Span Trail Bridge Standard

Bridge No: Name:

Span:

Structural Drawing :

Main Foundation on Rock

6 Main cables ømm (36/40mm)
2 Handrail cables ø 26 mm
2 Fixation cables ø 13 mm

Date: August 2004

Drawing No. 62/2(26)