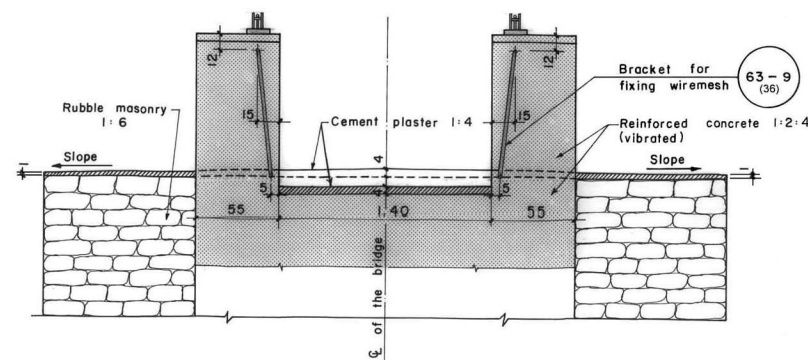
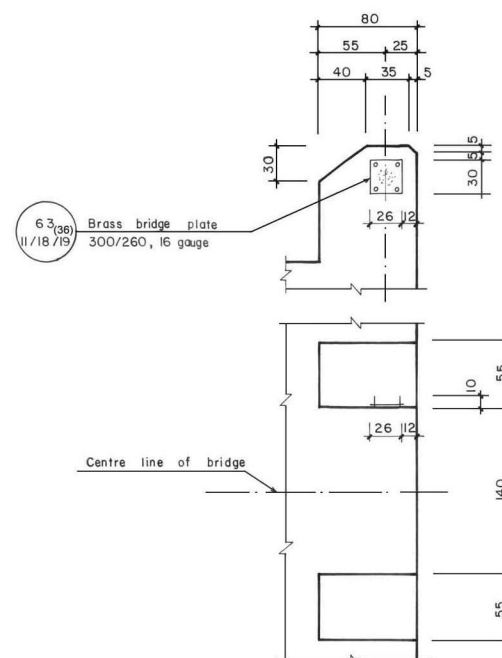


# FRONT VIEW (WITH PLASTER DETAIL)



# DETAIL OF SIGN BOARD FIXATION



## NOTES:

- 1) Wind the main cables 3 times around the drum before clamping.
- 2) Erect the deck before casting the third layer of reinforced concrete 1:2:4 (excluding wiremesh and fixation cable)
- 3) Do not allow persons to cross the bridge before casting and curing of the third layer of reinforced concrete 1:2:4
- 4) Required additional cable length for anchorage on one bank (from front of foundation): Handrail cable: 3.30m, Main cables: for front drum cable: 13.20m, for other cables: 17.60m.
- 5) Make rough construction and working joints.

## Standard Quantities:

B = ..... m. L = ..... m. H<sub>1</sub> = ..... m. H<sub>2</sub> = ..... m.

h<sub>p</sub> = ..... m.

	Vo Quantity (m <sup>3</sup> )	Cement	
		Bags/m <sup>3</sup>	No. of bags
Reinforced concrete 1:2:4 Vo = 15.052 + 0.88 h <sub>p</sub>		6.40	
Cement plaster 1:4 Vo = 0.025 LB - 0.026		9.12	
Rubble masonry 1:6 Vo = (BL - 16.25) 0.95		1.50	
Plumb concrete 1:3:6 + 40% boulders Vo = $\frac{BL}{2} (H_1 + H_2)$		2.64	
Total volume: V total = $\frac{BL}{2} (H_1 + H_2 + 1.95) + 0.88h_p - 0.412$			
		No. of cement bags	

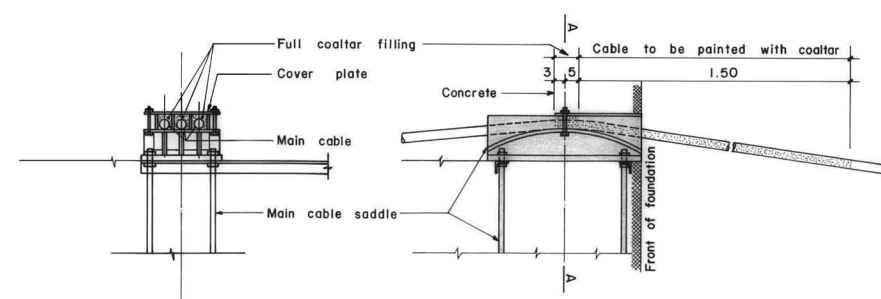
Quantity
Formwork: F <sub>0</sub> = 5.40 h <sub>p</sub> + 2.064

## Limits for Dimensions:

	Minimum	Maximum
B	6.70	9.50
L	3.30	5.50
H <sub>1</sub>	2.00	4.50
H <sub>2</sub>	1.00	4.50

# DETAIL OF CABLE FITTING AND PROTECTION AT SADDLE

## SECTION A-A



## INSTRUCTIONS

- 1) Wrap whole plate in plastic
- 2) Assemble bolts and nuts.
- 3) Attach assembled plate at inside of formwork, then cast in concrete.
- 4) Remove plastic after concrete setting.

## MoLD / DoLIDAR / Trail Bridge Section Long Span Trail Bridge Standard

Bridge No: ..... Name: .....

Structural Drawing:

## Main Foundation on Rock

Related drawings: 62 & 63 (36)

4 Main cables  $\phi$  ..... mm (36/40mm)

2 Handrail cables  $\phi$  36 mm

2 Fixation cables  $\phi$  13 mm

Date: August 2004

Drawing No. 62/2(36)