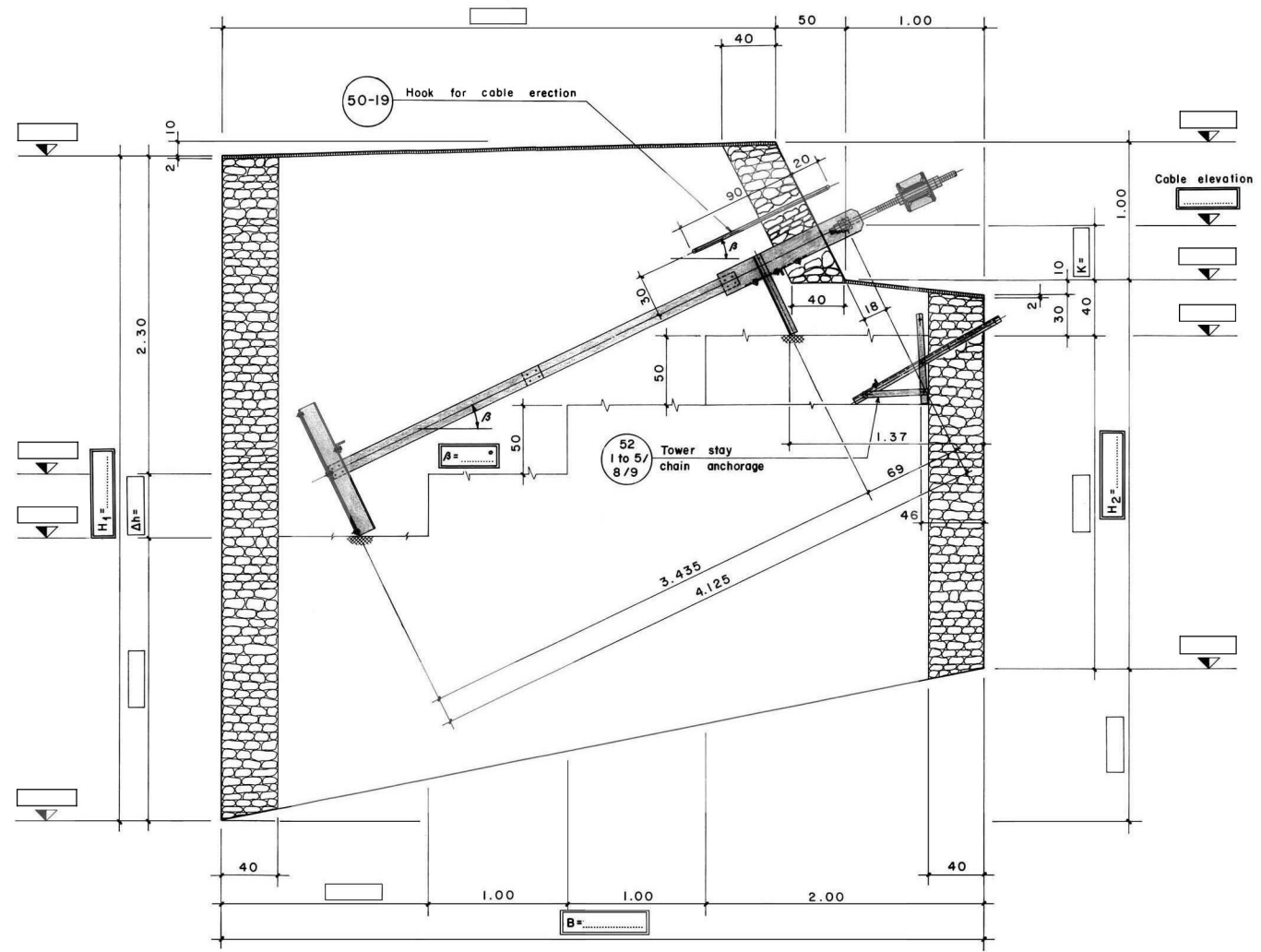
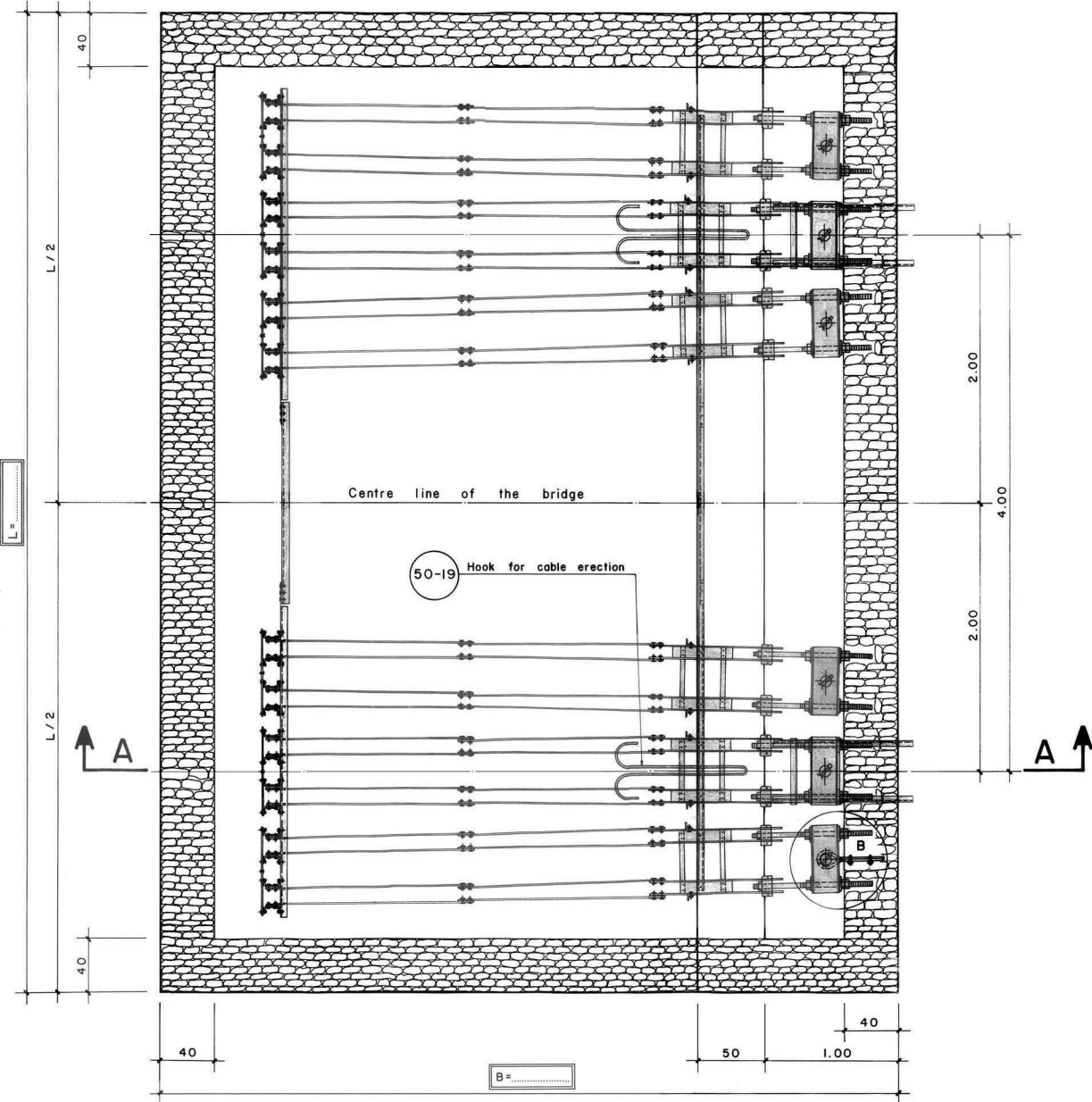


PLAN

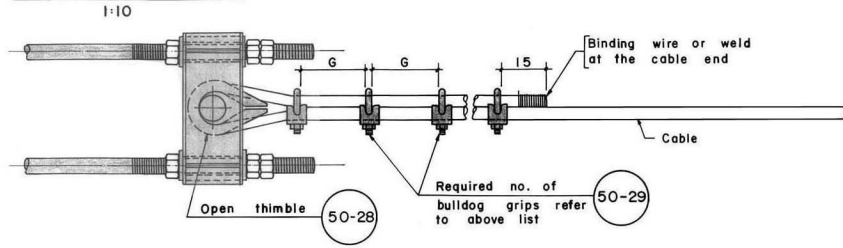
SECTION A-A



Cable Ø mm	Bulldog grips for one cable	Gap "G" mm
36	7	210
40	8	240

$K = 40 \text{ cm} + 0.65 \text{ cm} (\beta - 26.565^\circ) = \text{cm}$
 $\Delta h = 49 \text{ cm} + 5.40 \text{ cm} (\beta - 26.565^\circ) = \text{cm}$
 $20^\circ \leq \beta \leq 30^\circ$

DETAIL AT "B"



Formwork	Fo Quantity (m ²)
$Fo = (1.00 + \Delta h)(L - 0.80)$

Limits for Dimensions:

	Minimum	Maximum
B	5.40	6.00
L	7.10	9.10
H ₁	3.50	6.00
H ₂	1.60	5.00

Standard Quantities:

B = m.	L = m.	Vo Quantity (m ³)	Cement Bags/m ³	No. of bags
H ₁ = m.	H ₂ = m.			
Cement plaster 1:4, 2 cm thick Vo = 0.02 L (B - 0.50)		9.12
Rubble masonry 1:4 Vo = (L - 0.80)(0.4H ₁ + 0.4H ₂ + 0.356) + (H ₁ + H ₂ + 0.96)0.4B - 0.972		2.28
Plumb concrete 1:3:6 + 40 % boulders Vo = (L - 0.80) [(H ₁ + H ₂ + 0.96) $\frac{B}{2}$ - 0.4H ₁ - 0.4H ₂ - 1.57]		2.64
TOTAL VOLUME :- V _{total} = L [(H ₁ + H ₂ + 1.00) $\frac{B}{2}$ - 1.225]	
		No of cement bags		

INDEX

- Cement plaster 1:4, 2 cm thick
- Rubble masonry 1:4
- Plumb concrete 1:3:6 + 40 % boulders
- Data to be taken from General Arrangement
- Make proper supports on correct level with cement mortar 1:4
- Part number
- Working drawing number.

NOTES:

- Refer to General Arrangement for number and direction of probable anchorage rods (part 50-21,27) to stabilize the rock.
- The anchorage for temporary tower stay chains (part 52-1 to 5,8,9) shall only be used in connection with towers up to and including 25.23 m height. Refer to drawing number 52 for back stay and to drawing number 52 and 52/1 or 52/2 for front stay.
- For towers with a height of 27.73 m and more use separate anchorage blocks on both sides and tower stay chains at two levels of the tower. Refer to drawing number 52 and 52/3 in this case.

MoLD / DoLIDAR / Trail Bridge Section
Long Span Trail Bridge Standard

Bridge No: Name:
Span:

Structural drawing:

Main Cable Foundation

6 Main cables Ø mm (36 / 40mm)
Centre to centre distance: c/c₁ = 4.00m

Date: August 2004 Drawing No. 50/1