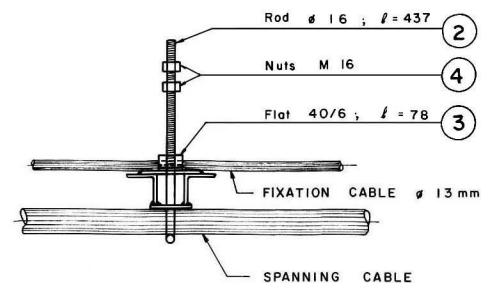


## STEELPART LIST

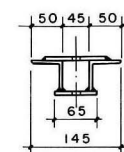
Part no.	Section (mm)	Quantity	Working Drawing (Dimension in mm)	Length		Weight		Surface painted		Total weight (finished) Galvanized kg	Remarks
				Single/pc mm	total m	kg/pc	total kg	m <sup>2</sup> /pc	total m <sup>2</sup>		
I	a Angle 50/50/6 l = 1440	2		1440	2.880	6.421	12.842	0.288	0.576	13.193	
	b Flat 65/6 l = 98	2		98	0.196	0.300	0.600	0.013	0.026	0.616	
	c Flat 45/6 l = 60	2		60	0.120	0.127	0.254	0.005	0.010	0.260	
	d Flat 55/6 l = 100	2		100	0.20	0.259	0.518	0.011	0.022	0.531	Weight of one welded unit = 14.316 kg Galvanized unit = 14.703 kg
	e Hexagonal nut M 12 IS 1363	8				0.018	0.144	Galvanized			Part nos. I (a-e) to be welded together as shown in welding detail.
2	Rod ø 16 l = 437	2		437	0.874	0.637	1.274	0.010	0.020	1.286	
3	Flat 40/6 l = 78	2		78	0.156	0.139	0.278	0.008	0.016	0.148	
4	Hexagonal nut M 16 IS 1363	6.30				0.032	0.202	Galvanized			5 % extra pieces. Ref. IS 1363 - IS 1967.
5	Binding wire G.I. wire 12SWG (ø 2.64)				9.00			Galvanized			Total Weight = 0.387 kg Cost est. pos. no. 016
TOTAL (1-5) =					16.11 kg			0.67 m <sup>2</sup>	16.03 kg		

Steel parts to be Galvanized :	15.77 kg.	Hot Dip Galvanization : IS 2629 , IS 2633
Steel parts to be Painted :	0.67 m <sup>2</sup>	Weight of Zinc Coat : 0.61 kg / m <sup>2</sup>

SECTION C-C



SECTION A-A



## NOTES :

- 1) All nuts have to be retightened after erection.
- 2) All nongalvanized threads have to be painted in site with coaltar after retightening of the nuts.
- 3) All steel parts have to be painted with final coat after bridge erection, only if not galvanized.
- 4) To obtain uniformity, use of templates and jigs is mandatory for holing, bending and welding of assembly.
- 5) All parts or bundles and packages with identical parts have to be labelled or marked with the respective part number by the workshop.
- 6) Assembly details or steel deck see drawing No. 08.

Serial number	Item	Total weight (kg)
1	Structural steel	15.77
2	Screws, bolts, nuts, washers	0.35
Total 1 + 2		16.12

TOTAL TRANSPORTATION WEIGHT : 16.38 kg

MoLD / DoLIDAR / Trail Bridge Section  
Long Span Trail Bridge Standard

Bridge No: Name:

Span:

Working &amp; Assembly Drawing :

## Walkway

Units :	1 Unit = Steel parts for 1.20m bridge length
= (L - 1.0) / 1.2	

Date: August 2004

Drawing No. 07