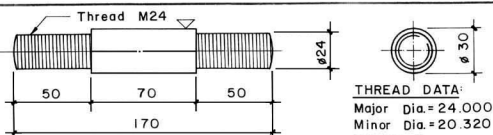
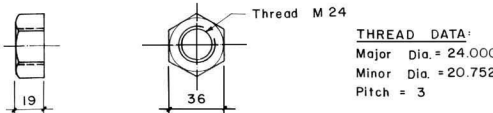
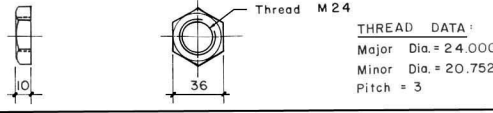
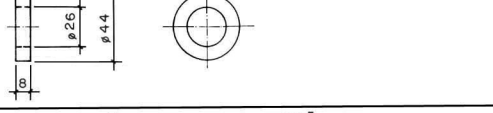
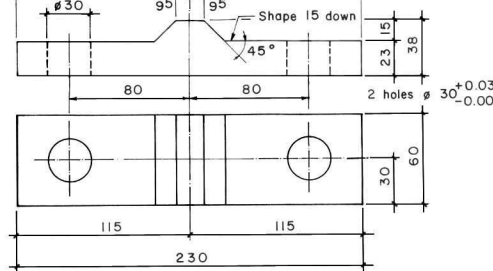
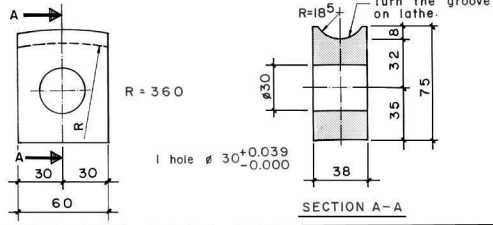


STEELPART LIST

Part no.	Section (mm)	Quantity	Working Drawing (Dimension in mm)	Length Single/pc mm total m	Weight kg / pc total kg	Surface m ² /pc total m ²	to be painted total m ²	Total weight (finished) Galvanized kg	Remarks		
1	Rod ϕ 30 $l = 170$	2		170	0.34	0.69	1.38	Apply grease only	1.40		
2	Hexagonal nut M 24 IS 1363	5		—	—	0.10	0.50	Galvanized		1 pc. extra. Ref: IS 1363-1967.	
3	Hexagonal lock nut M 24 IS 1363	5		—	—	0.055	0.28	Galvanized		1 pc. extra. Ref: IS 1363-1967.	
4	Washer ϕ 26 IS 6610	5		—	—	0.062	0.31	Galvanized		1 pc. extra. Ref: IS 6610-1972.	
5	Plate 230 / 60 / 40	2		—	—	2.48	4.96	0.04	0.08	5.01	
6	Plate 75 / 60 / 40	2		—	—	1.04	2.08	0.02	0.04	2.10	
TOTAL (1 - 6) = 9.51kg						0.12 m ²	8.51kg				

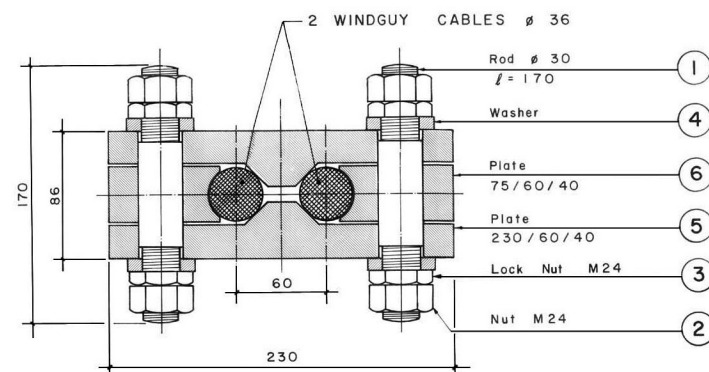
NOTES :

- 1) All nuts have to be retightened after erection.
- 2) All nongalvanized threads have to be painted in site with coaltar after retightening of the nuts.
- 3) All steelparts have to be painted with final coat after bridge erection, only if not Galvanized.
- 4) To obtain uniformity, use of templates and jigs is mandatory for holing, bending and welding of assembly.
- 5) All parts or bundles and packages with identical parts have to be labelled or marked with the respective part number by the workshop.

Serial number	Item	Total weight (kg)
1	Structural steel	8.42
2	Screws, bolts, nuts, washers	1.09
Total 1 + 2		9.51

TOTAL TRANSPORTATION WEIGHT : 9.60 kg

Steel parts to be Galvanized :	8.42 kg	Hot Dip Galvanization : IS 2629, IS 2633
Steel parts to be Painted :	0.12 m ²	Weight of Zinc Coat : 0.61 kg / m ²

ASSEMBLY DETAIL
(Section of windguy cable clamp)MoLD / DoLIDAR / Trail Bridge Section
Long Span Trail Bridge Standard

Bridge No: _____ Name: _____

Span: _____

Working & Assembly Drawing :

Windguy Cable Clamp
for Cable ϕ 36 mm

(Used in connection with double windguy cables)

Units : 1 Unit \equiv One windguy cable clamp

Date: August 2004

Drawing No. 18