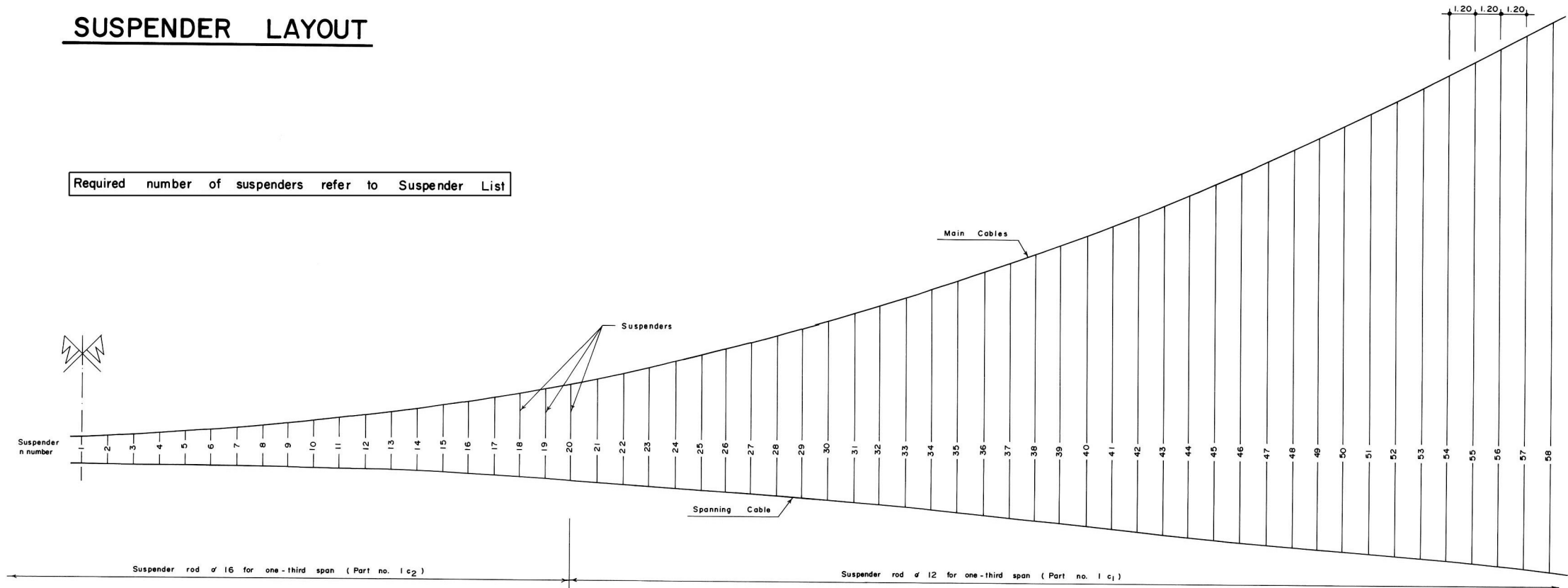


SUSPENDER LAYOUT

Required number of suspenders refer to Suspenders List

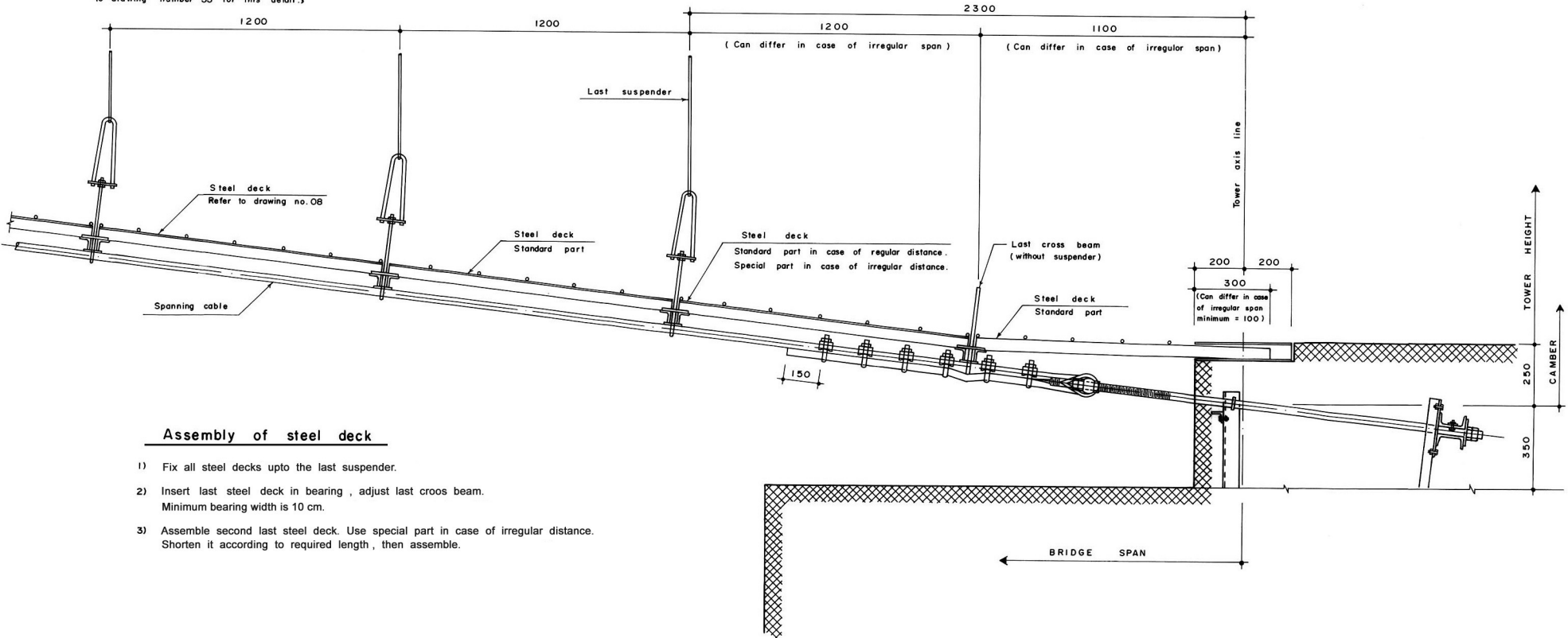


NOTES :

- 1) All nuts have to be retightened after erection.
- 2) All nongalvanized threads have to be painted in site with coaltar after retightening of the nuts.
- 3) All steel parts have to be painted with final coat after bridge erection, only if not Galvanized.
- 4) To obtain uniformity, use of templates and jigs is mandatory for holing, bending and welding of assembly.
- 5) All parts or bundles and packages with identical parts have to be labelled or marked with respective part number by the workshop.

DETAIL AT TOWER FOUNDATION

(In case 6 cables are used in connection with Walkway and Tower Foundation drawing number 93, refer to drawing number 33 for this detail.)



Assembly of steel deck

- 1) Fix all steel decks upto the last suspender.
- 2) Insert last steel deck in bearing, adjust last cross beam. Minimum bearing width is 10 cm.
- 3) Assemble second last steel deck. Use special part in case of irregular distance. Shorten it according to required length, then assemble.