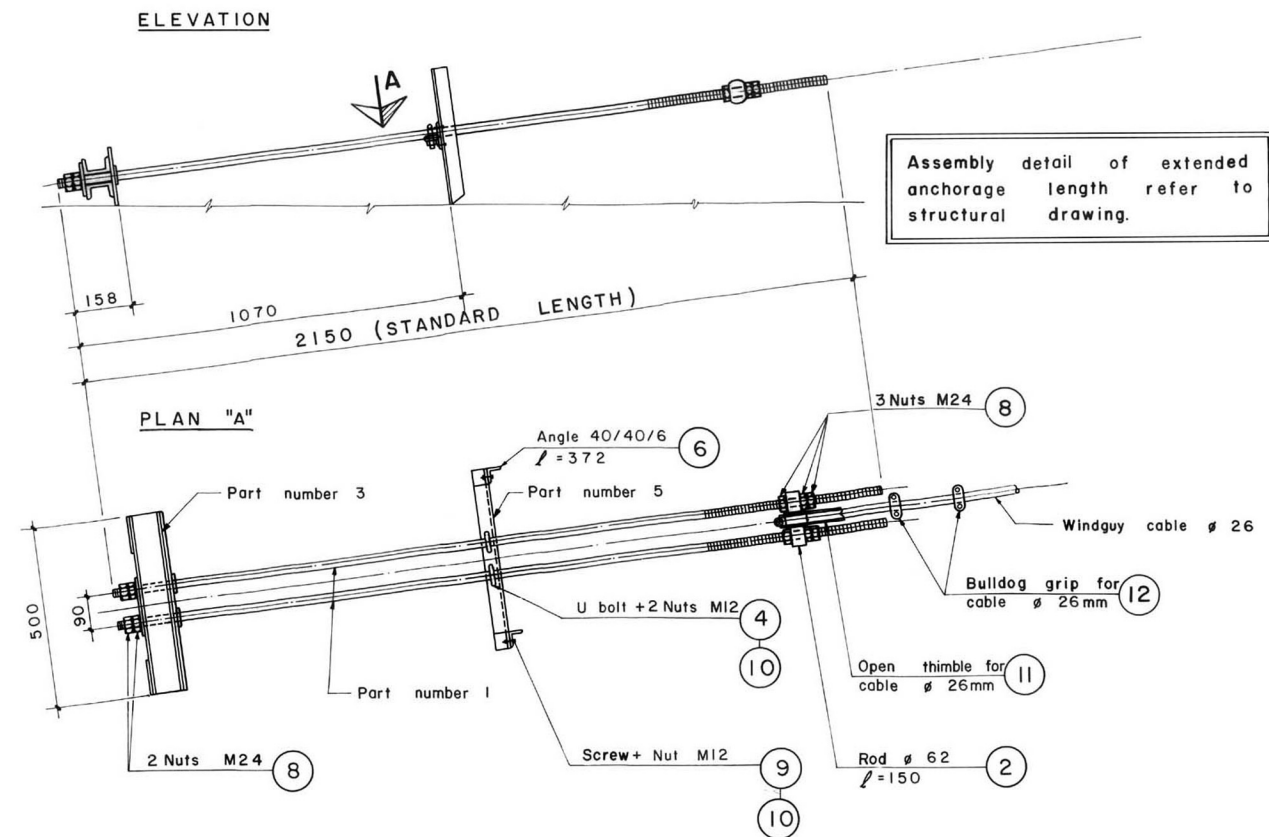
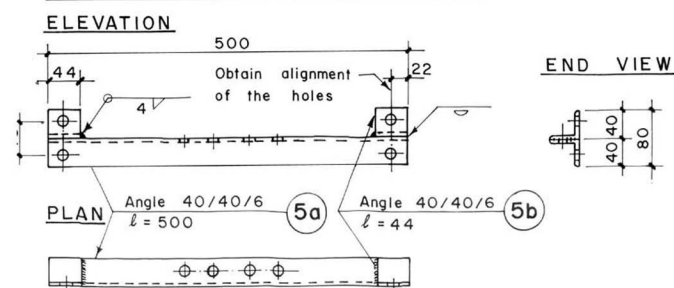


ASSEMBLY DETAIL

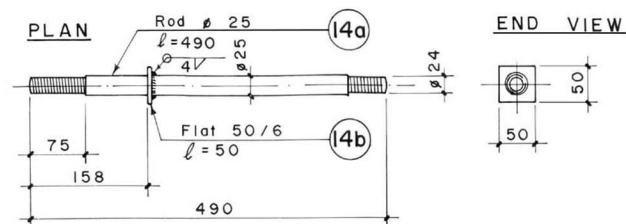


WELDING DETAIL OF PART NO 5

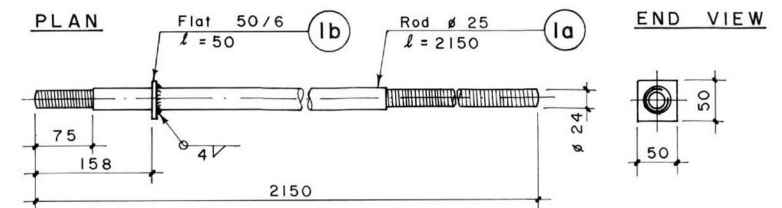


WELDING DETAIL OF PART NO 14

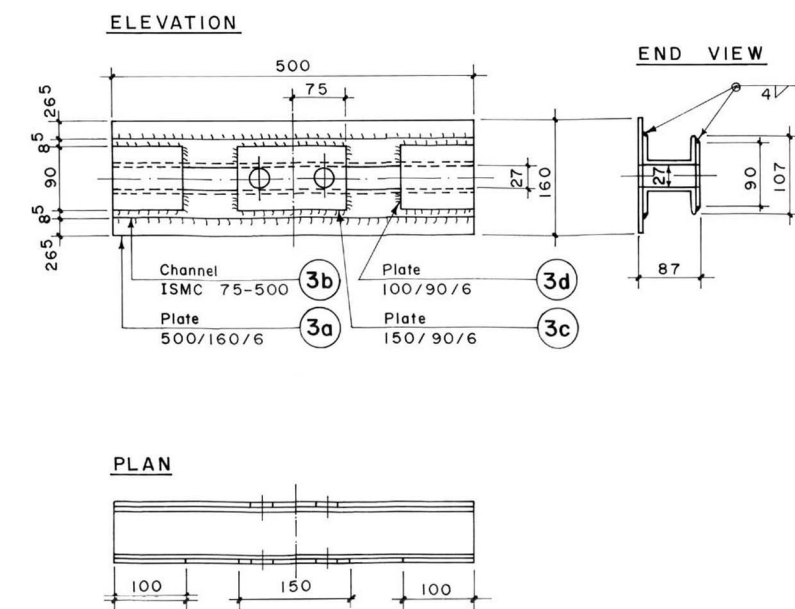
(This part is used only when anchorage length is extended)



WELDING DETAIL OF PART NO 1



WELDING DETAIL OF PART NO 3



WELDING DETAIL OF PART NO 13

(This part is used only when anchorage length is extended)

