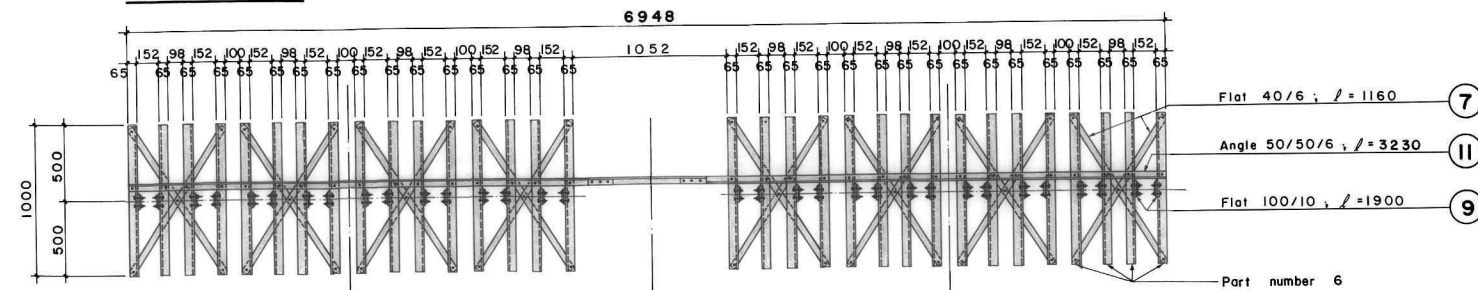
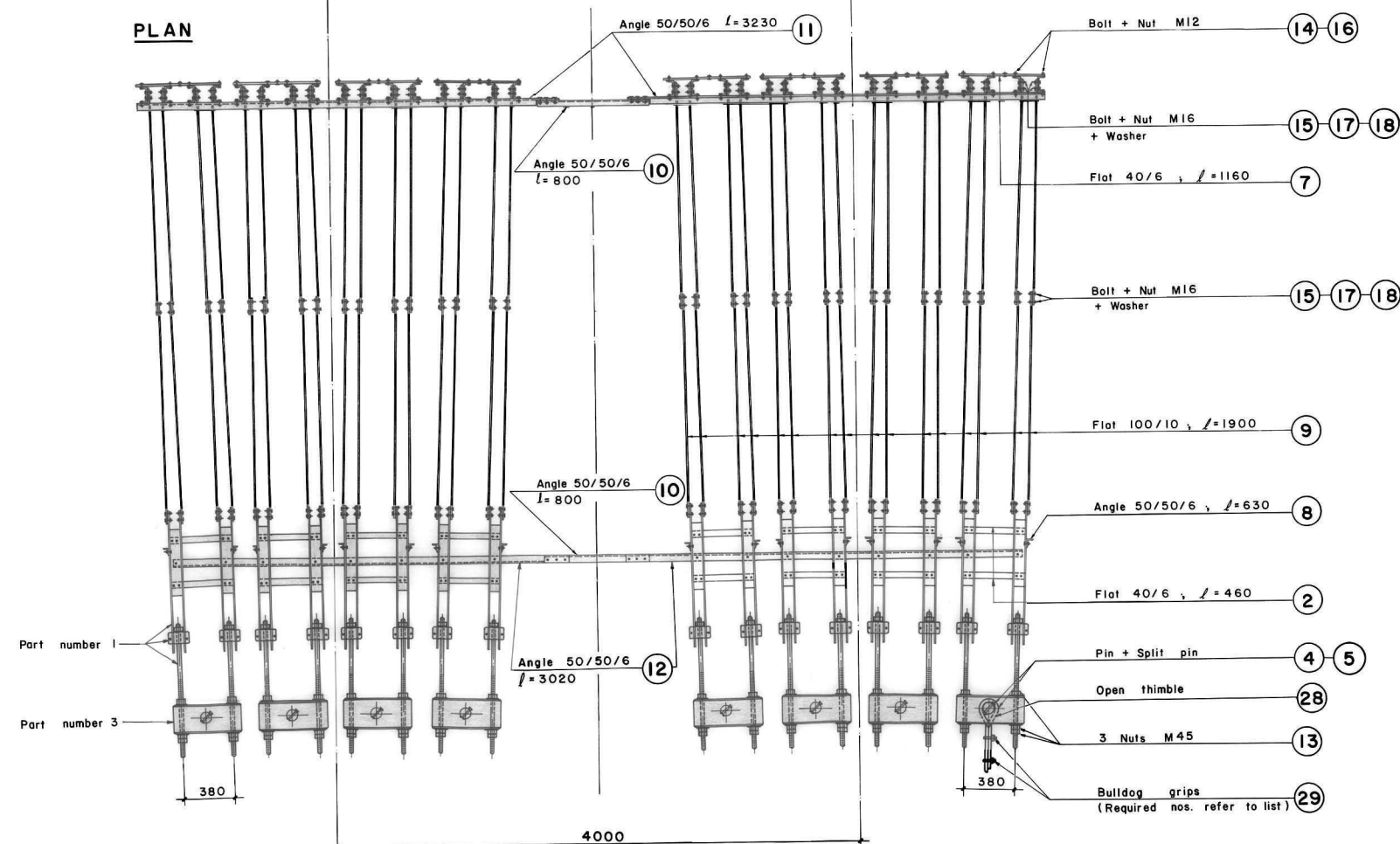


# ASSEMBLY DETAIL

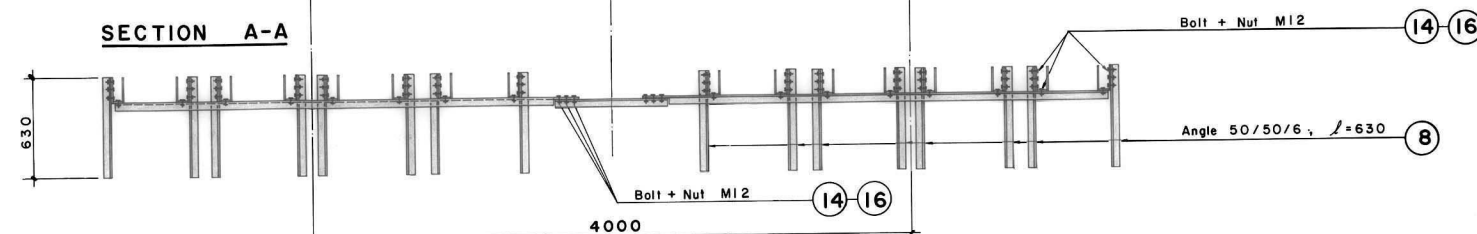
## SECTION B-B



## PLAN



## SECTION A-A



## NOTES :

- 1) All nuts have to be retightened after erection.
- 2) All nongalvanized threads have to be painted in site with coaltar after retightening of the nuts.
- 3) All steel parts have to be painted with final coat after bridge erection, Only if not galvanized.
- 4) To obtain uniformity, use of templates and jigs is mandatory for holing, bending and welding of assembly.
- 5) All parts or bundles and packages with identical parts have to be labelled or marked with the respective part number by the workshop.

Serial number	Item	Total Weight (kg)
1	Structural Steel	
	Part nos. 1-19 :	2712.56
	Part nos. 21-27 :	...
2	Screws, bolts, nuts & washers	
	Part nos. 1, 13-18 :	134.04
	Part nos. 22-25 :	...
3	Reinforcement	
	Part no 20	...
Total 1 + 2 + 3		

	(Pieces)
Thimbles for Cable Ø 36, (40)	8 (8)
Bulldog grips for cable Ø 36, (40)	56 (64)

TOTAL TRANSPORTATION WEIGHT	
( 1 - 19 )	2861.34 kg
( 20 - 29 )	...
Total	...

## MoLD / DoLIDAR / Trail Bridge Section Long Span Trail Bridge Standard

Bridge No: Name:

Span:

Working & Assembly Drawing :

## Main Cable Anchorage

8 Main Cables Ø  mm ( 36 / 40 mm )  
Capacity : 2440 kN  
Centre to Centre Distance: c/c<sub>1</sub> = 4.00m

Units : ..... 1 Unit = Steel parts for one block

Date: August 2004

Drawing No. 51