

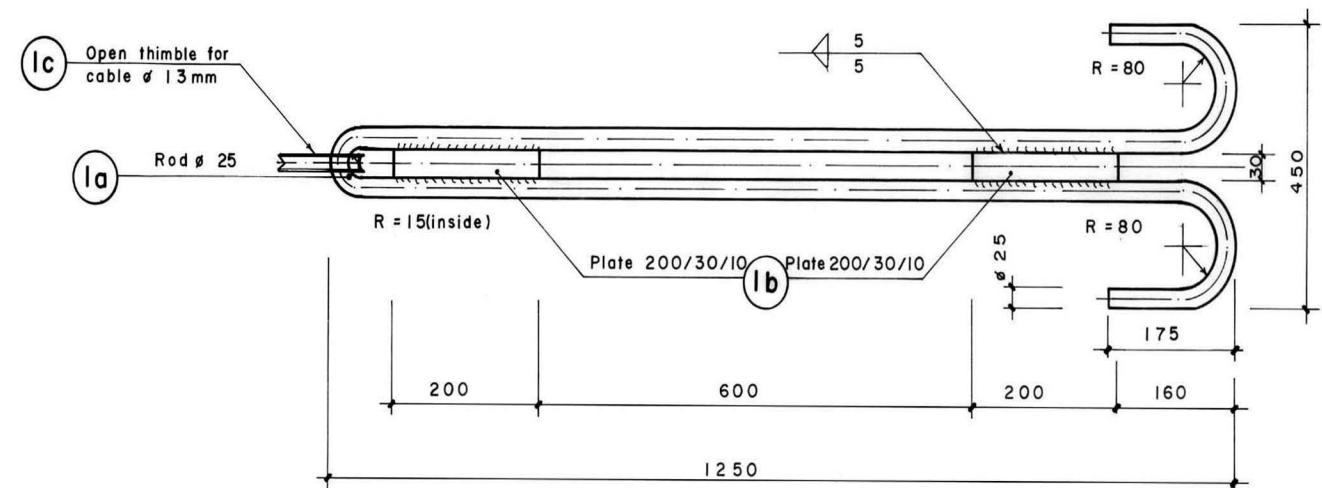
STEELPART LIST

Part no.	Section (mm)	Quantity	Working Drawing (Dimension in mm)	Length Single/pc total m	Weight kg/pc total kg	Surface to be painted m ² /pc total m ²	Total weight (finished) Galvanized kg	Remarks
a	Rod ϕ 25 L = 3050	1		3050 3.05	11.75 11.75	0.02 0.02 (Partly painted)		
b	Plate 200/30/10	2		— —	0.47 0.94	Negligible		
c	Open thimble	1	Thimble to ISI standard for cable ϕ 13 mm	— —	0.12 0.12	Galvanized	—	Ref : IS 2315-1978
TOTAL =				12.81	kg	0.02 m ²		

NOTES

- 1) All nuts have to be retightened after erection
- 2) All nongalvanized threads have to be painted in site with coaltar after retightening of the nuts.
- 3) All steel parts have to be painted with final coat after bridge erection.
- 4) To obtain uniformly, use of templates and jigs is mandatory for holing, bending and welding of assembly.
- 5) All parts or bundles and packages with identical parts have to be labelled or marked with the respective part number by the workshop.

WELDING DETAIL



Serial number	Item	Total weight (kg)
1	Structural steel	12.69
Total		12.69
Thimbles for Cable ϕ 13 mm		1 pc

TOTAL TRANSPORTATION WEIGHT : 12.81 kg

MoLD / DoLIDAR / Trail Bridge Section
Long Span Trail Bridge Standard

Bridge No: Name:

Span:

Working & Assembly Drawing :

**TEMPORARY TOWER
FIXATION ANCHORAGE**

Each cable capacity :

Units : 1 Unit = Stay at one level at one side of one tower

Date: August 2004

Drawing No. 52