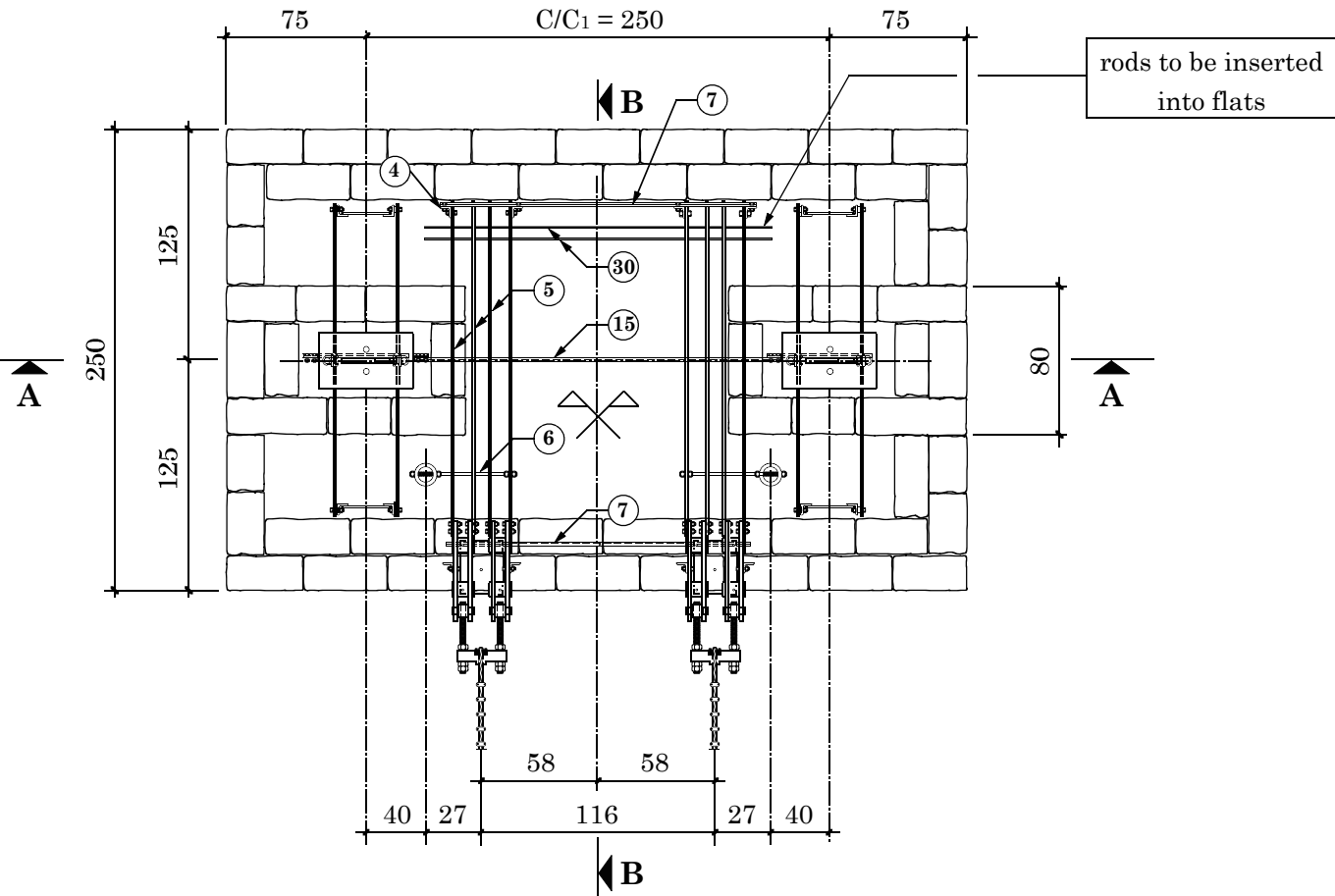


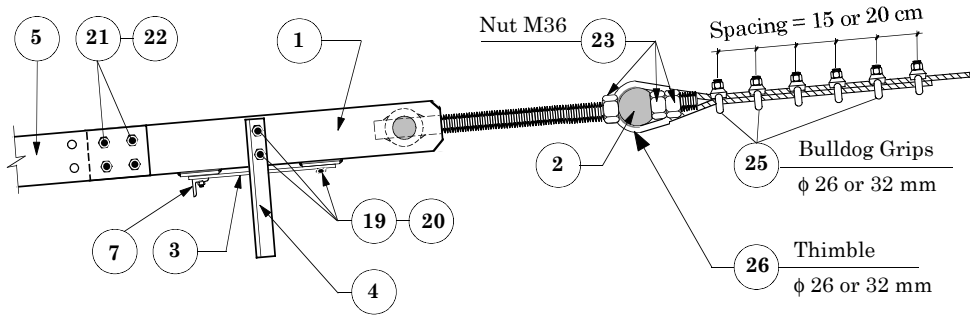
Plan View



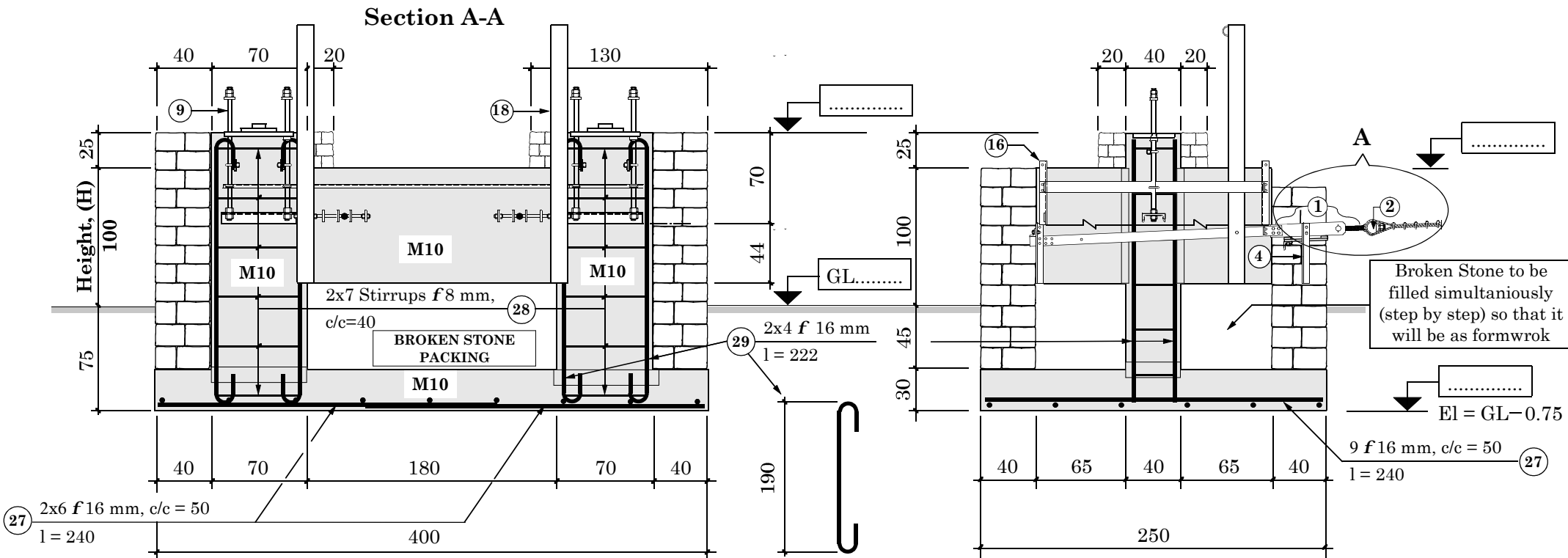
Standard Quantities

Type of construction	[m³]
Hammer dressed Cement Stone Masonry 1:6	6.99
Concrete 1:3:6	6.67
Broken Stones	4.35
Total Volume	18.01

Detail at A



Section B-B



Transfer required reinforcement to
Drawing No. 92N (pos 27, 28 & 29)

for Steel Part Numbers
refer to Drawing No. 92N

HMG / Ministry of Local Development
DoLIDAR / Short SpanTrail Bridge Standard

Bridge Name:

No: Bank: Span:

Construction Drawing :

Walkway & Tower Foundation

for Suspension Bridge with 2 Main Cables φ 26/32 mm

Block Height 1.0m, for Hard Rock

Spanning Cables 2 f 26 or 2 f 32 mm

Tower c/c₁ = 2.50m; c/c₂ = 383mm

Foundation Type TF 5

Date : Aug. 5, 2002

Drawing No. 92/5Ncon