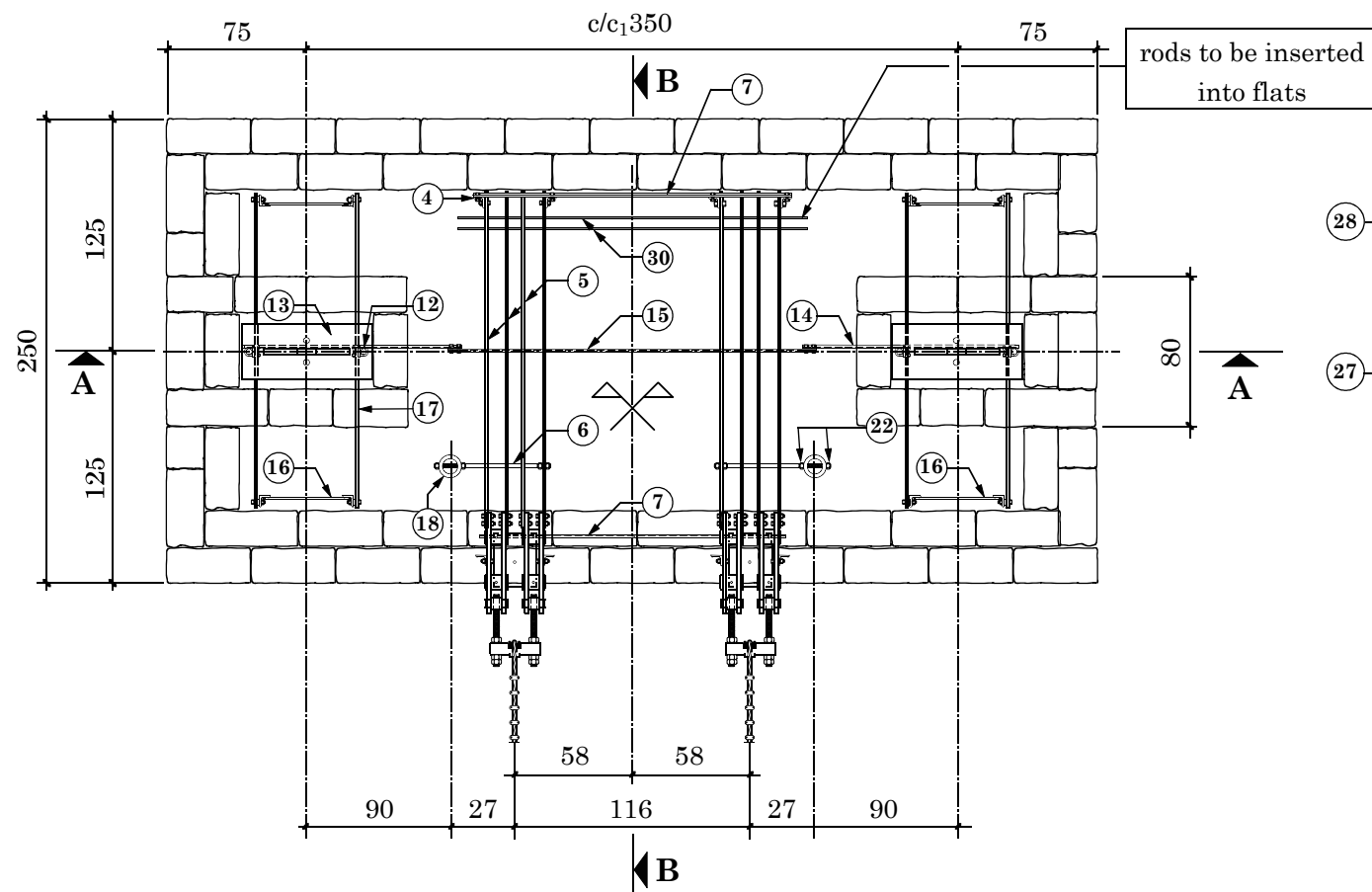
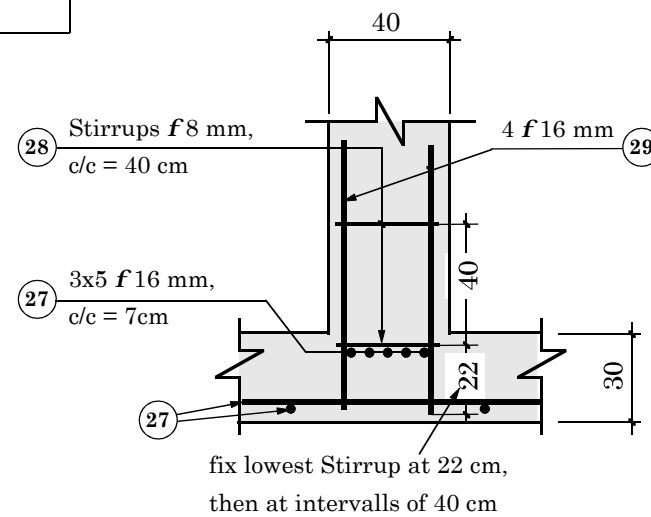


Plan View



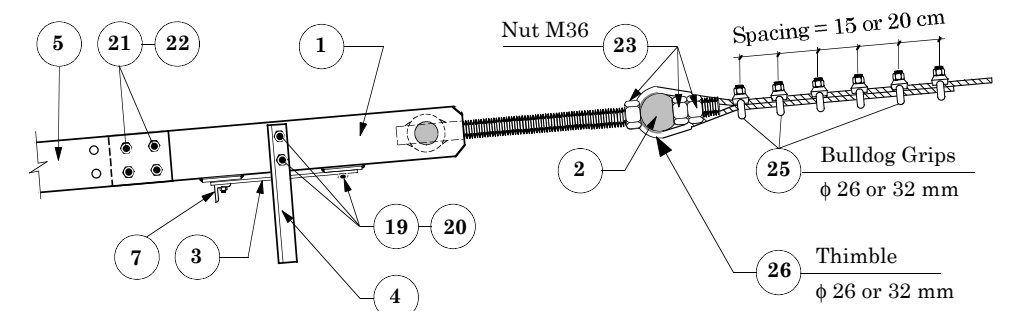
Detail at B 1 : 25



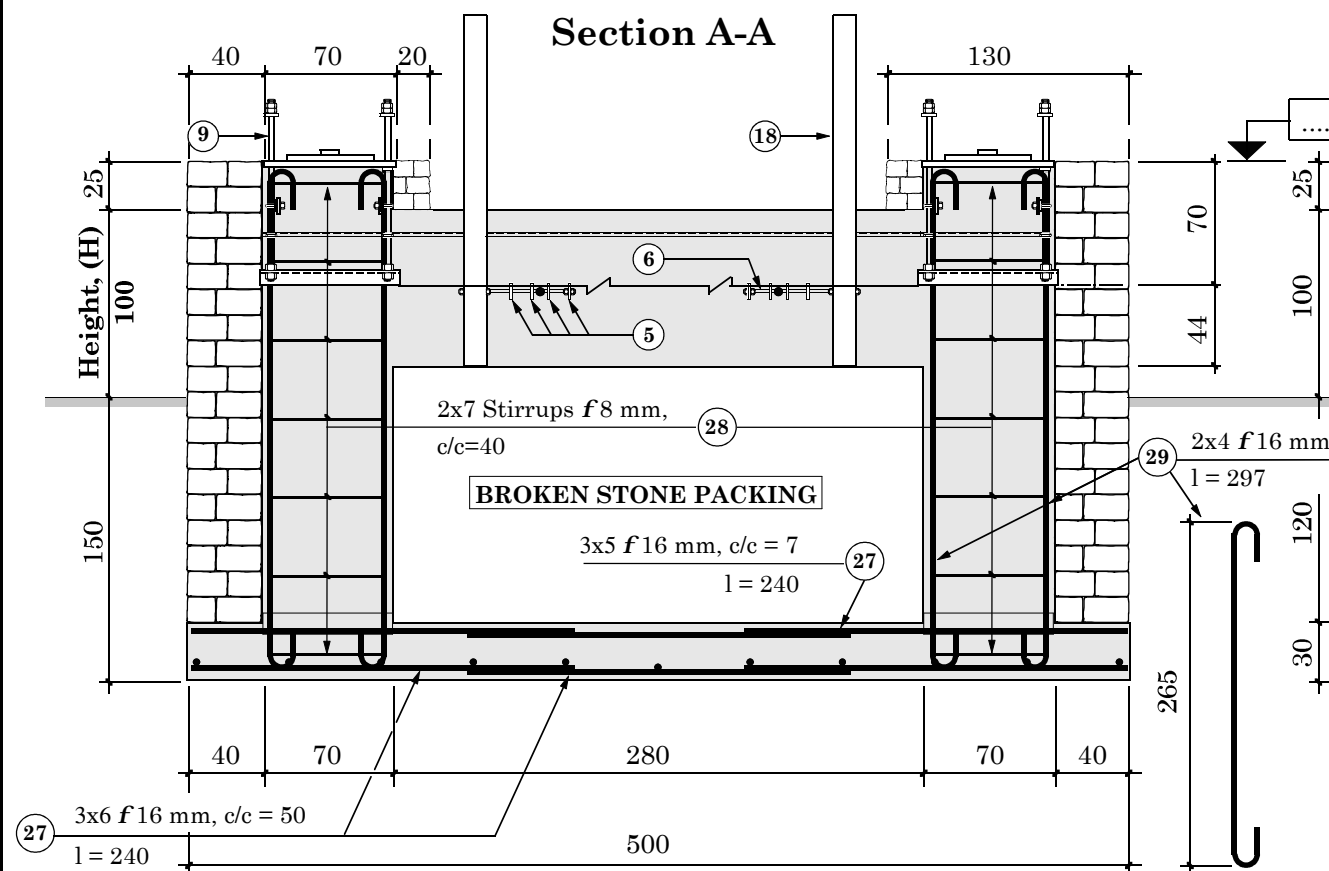
Standard Quantities

Type of construction	[m ³]
Hammer dressed Cement Stone Masonry 1:6	12.17
Concrete 1:3:6	9.36
Broken Stone Packing	10.24
Total Volume	31.77

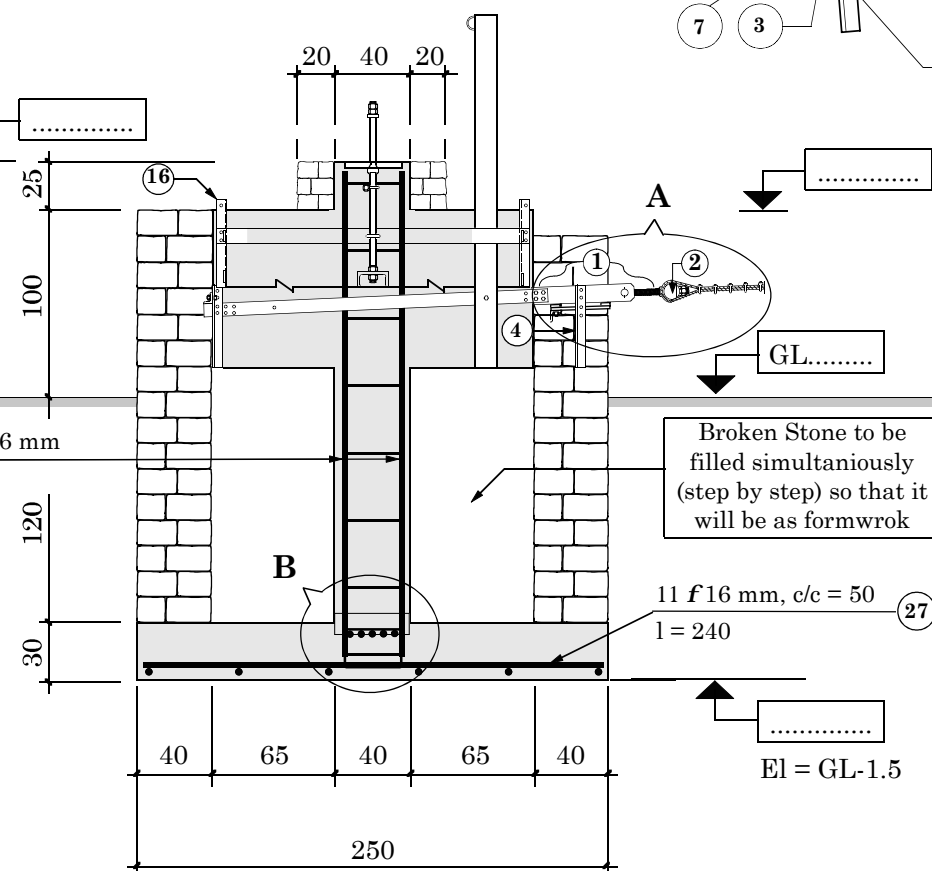
Detail at A



Section A-A



Section B-B



Transfer required reinforcement to
Drawing No. 94N (pos 27, 28 & 29)

18 for Steel Part Numbers
refer to Drawing No. 94N

HMG / Ministry of Local Development
DoLIDAR / Short Span Trail Bridge Standard

Bridge Name:

No: Bank: Span:

Construction Drawing :

Walkway & Tower Foundation

for Suspension Bridge with 4 Main Cables f 26/32 mm

Block Height 1.0m, for all Soil Types, soft/fract. Rock

Spanning Cables 2 f 26 or 2 f 32 mm

Tower c/c₁ = 3.50m; c/c₂ = 383mm

Foundation Type TF 6

Date : Aug. 5, 2002

Drawing No. 94/1Ncon