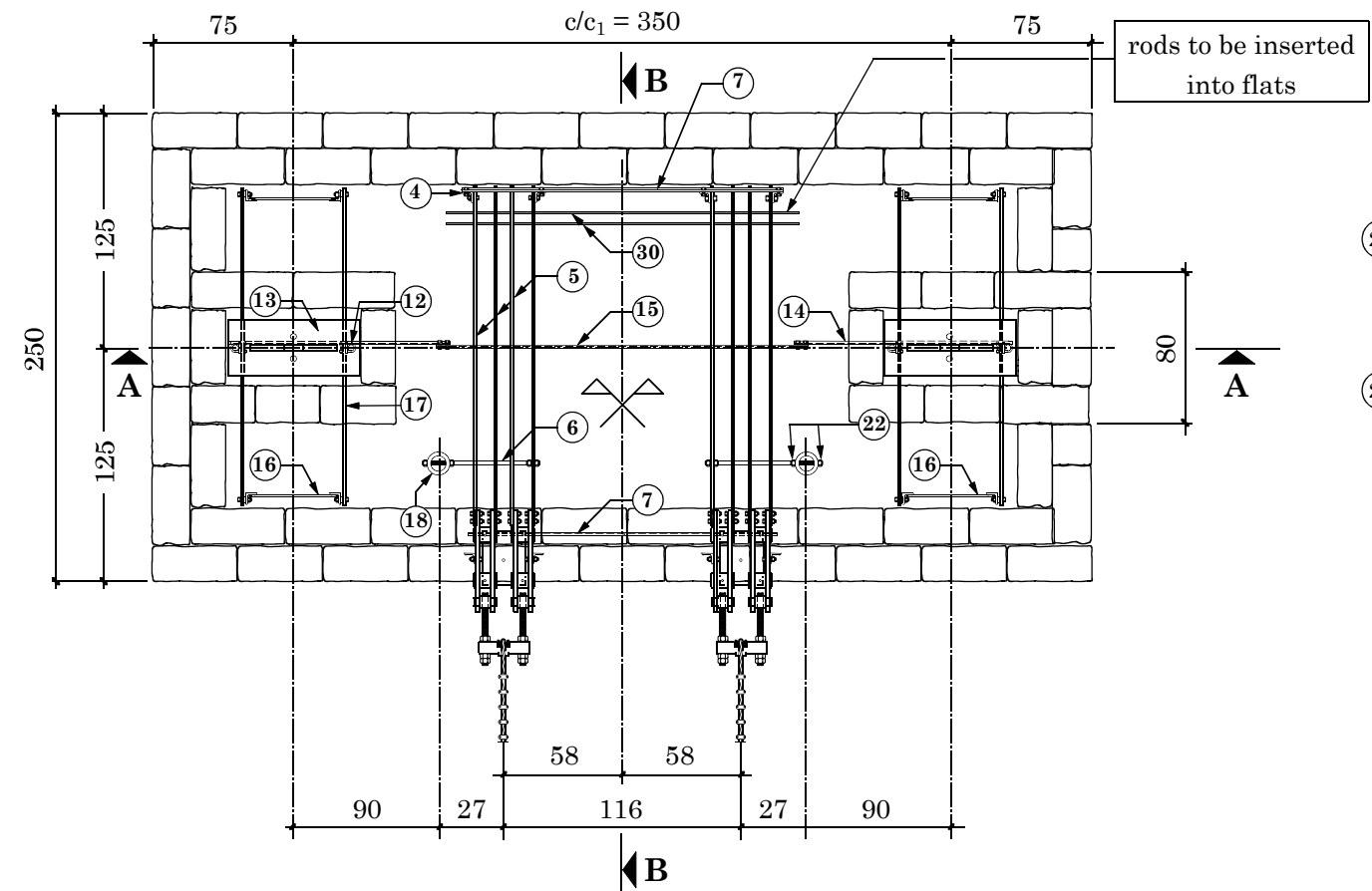
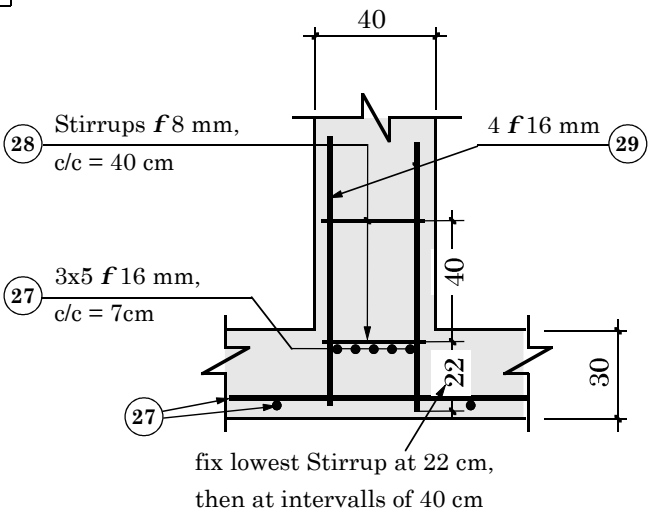


Plan View



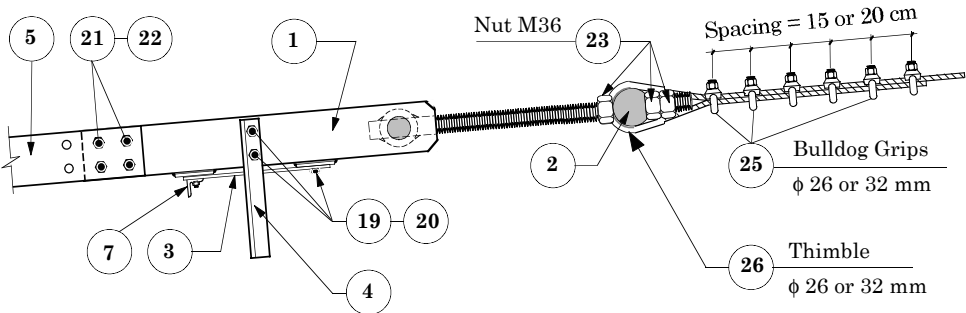
Detail at B 1 : 25



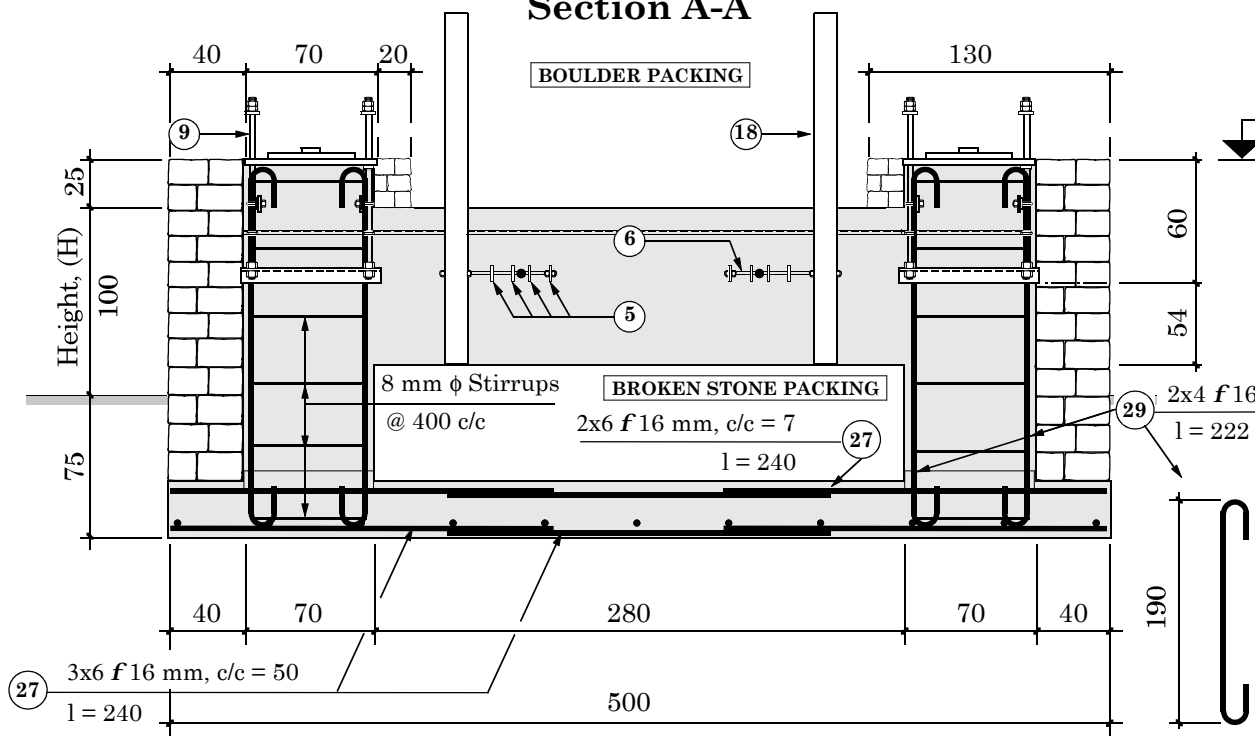
Standard Quantities

Type of construction	[m ³]
Hammer dressed Cement Stone Masonry 1:6	8.15
Concrete 1:3:6	10.55
Broken Stone Packing	3.67
Total Volume	22.37

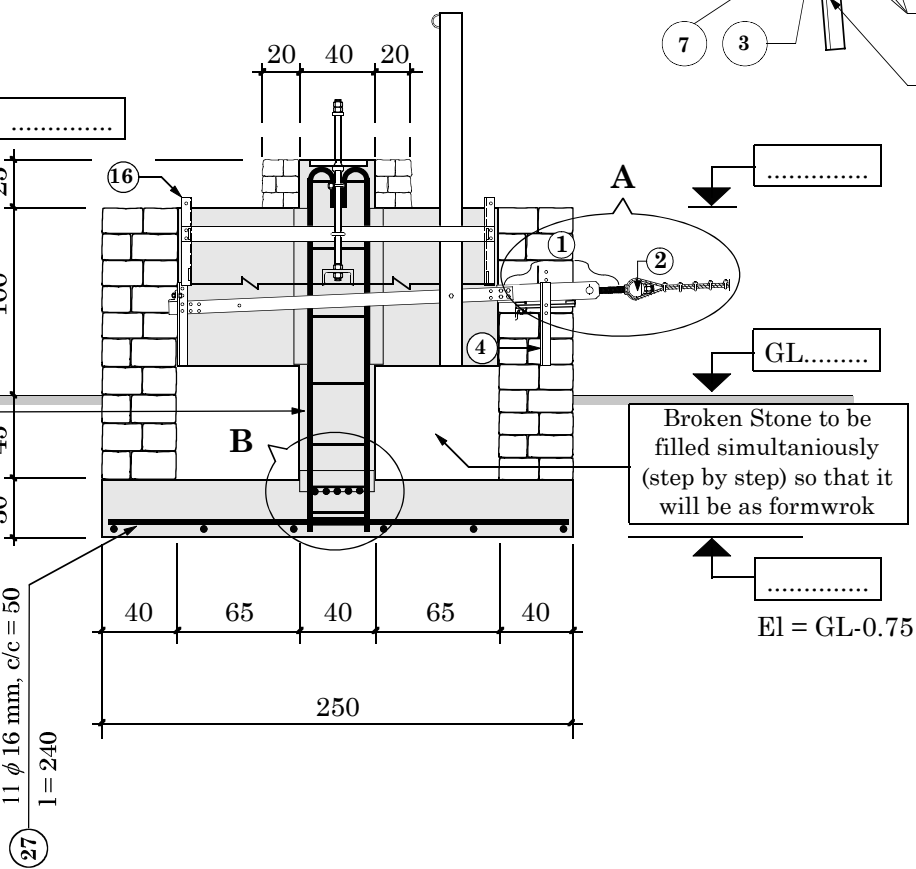
Detail at A



Section A-A



Section B-B



Transfer required reinforcement to
Drawing No. 94N (pos 27, 28 & 29)

for Steel Part Number
refer to Drawing No. 94N

HMG / Ministry of Local Development
DoLIDAR / Short Span Trail Bridge Standard
Bridge Name: _____
No: _____ Bank: _____ Span: _____
Construction Drawing :
Walkway & Tower Foundation
for Suspension Bridge with 4 Main Cables $f 26/32$ mm
Block Height 1.0m, for hard Rock
Spanning Cables 2 $f 26$ or 2 $f 32$ mm
Tower $c/c_1 = 3.50$ m; $c/c_2 = 383$ mm
Foundation Type TF 12
Date : Aug. 5, 2002 Drawing No. 94/7Ncon