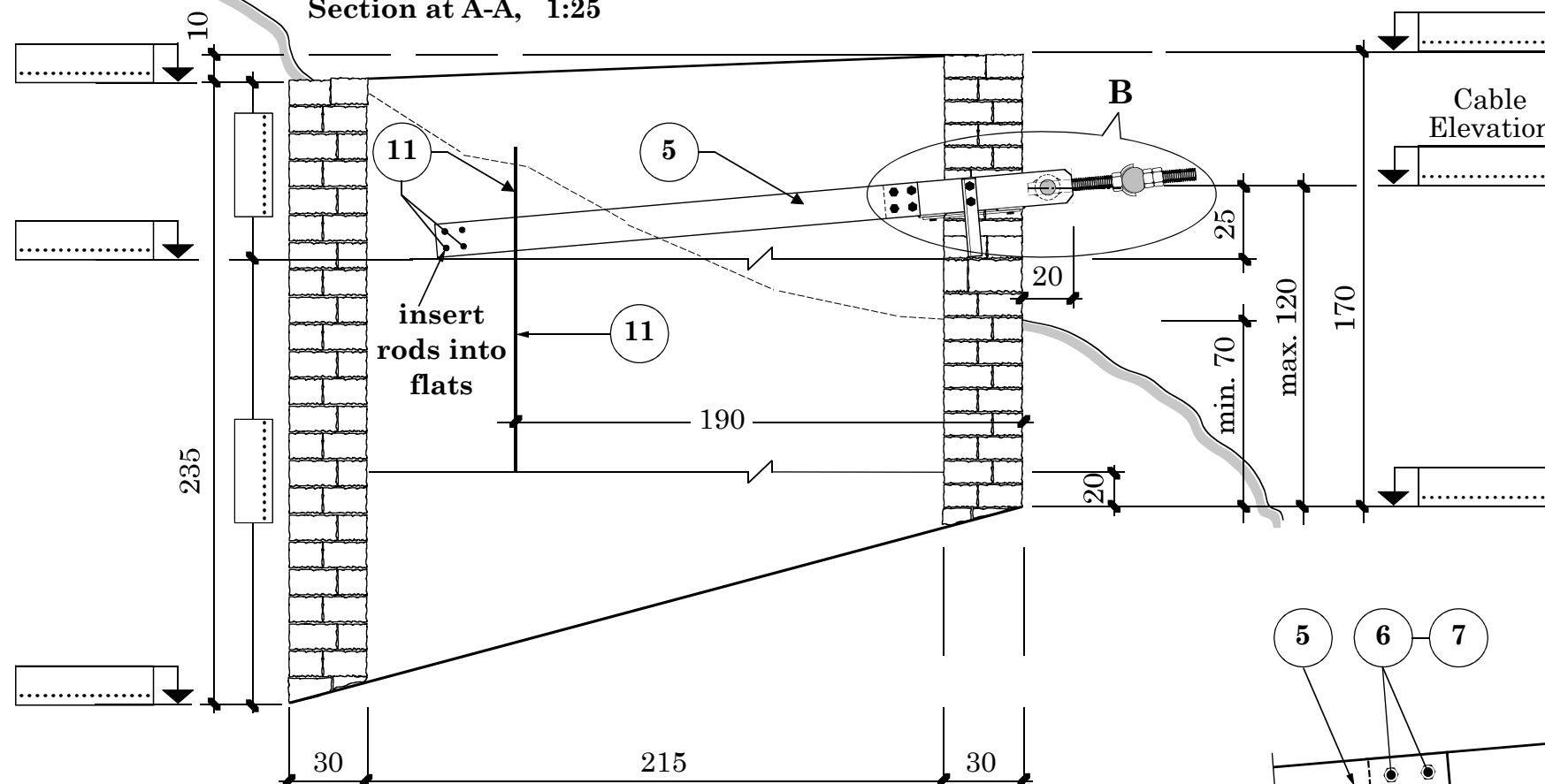


# Gravity Soil Anchor Block for Windguy Cable

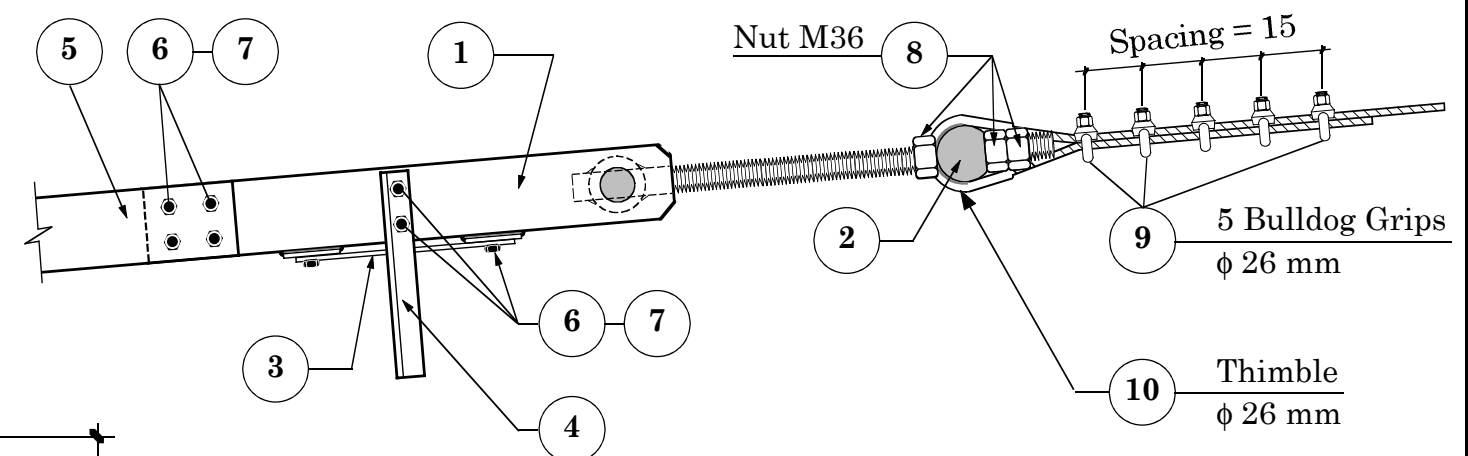
Section at A-A, 1:25



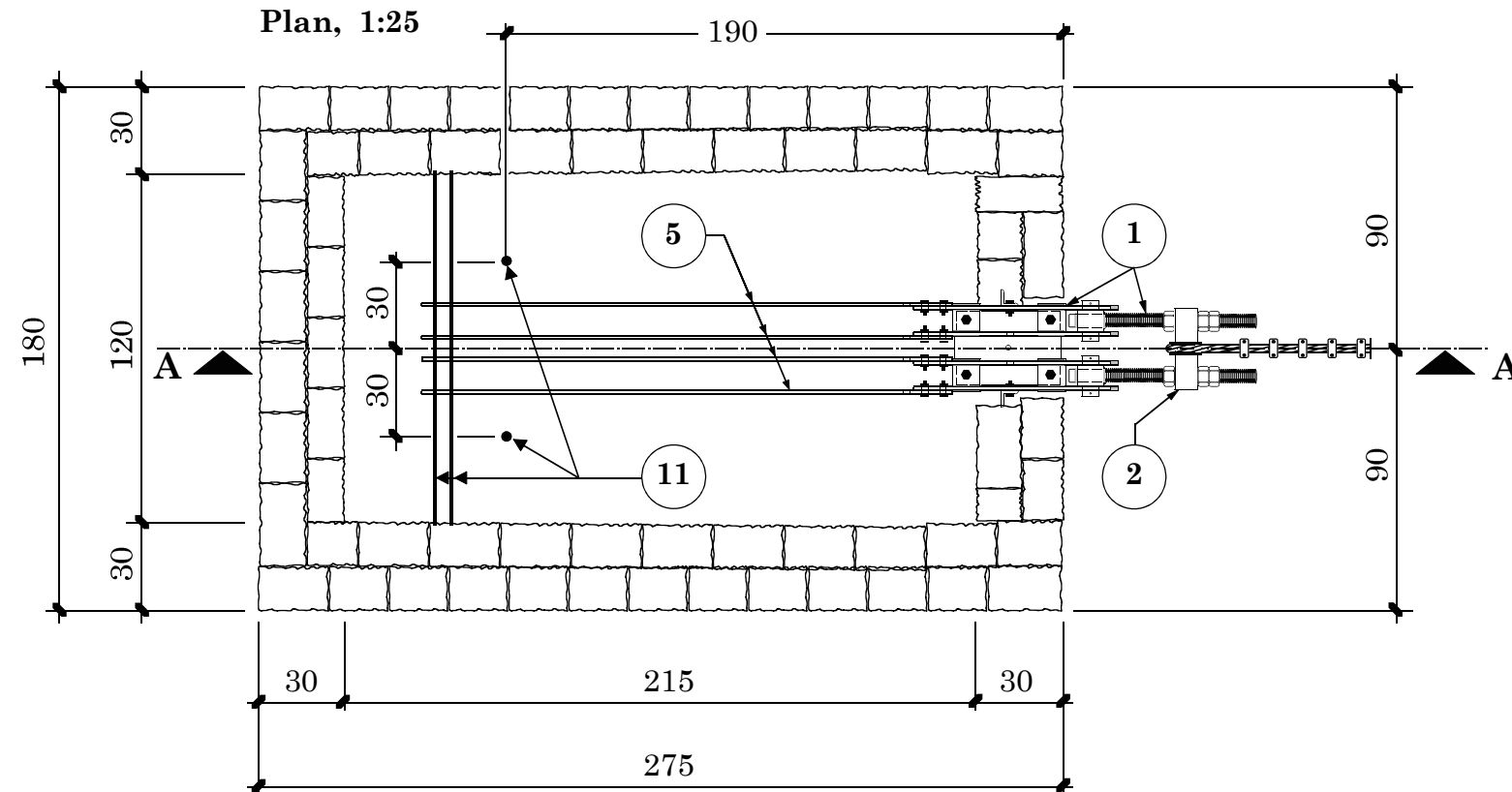
Standard Quantities

Type of Construction	[m³]
<div></div> Hammer dressed Cement Stone Masonry 1:6	4.80
<div></div> Plumb Concrete 1:3:6 + 50 % Boulders	5.22
<b>Total</b>	<b>10.02</b>

Detail at B 1:10



Plan, 1:25



Related Steel  
Drawing is :  
**50A**

Construct dry stone  
retaining wall as per site  
condition

HMG / Ministry of Local Development		
DoLIDAR / Short SpanTrail Bridge Standard		
Bridge Name:		
No:	Bank:	Span:
Construction Drawing:		
<b>Windguy Cable Anchor Block</b>		
for Cable f 26 mm		
for all Soil Types in Hill Slopes		
with Turnbuckle		
Date : September 30, 2002      Drawing No. 51Acon		