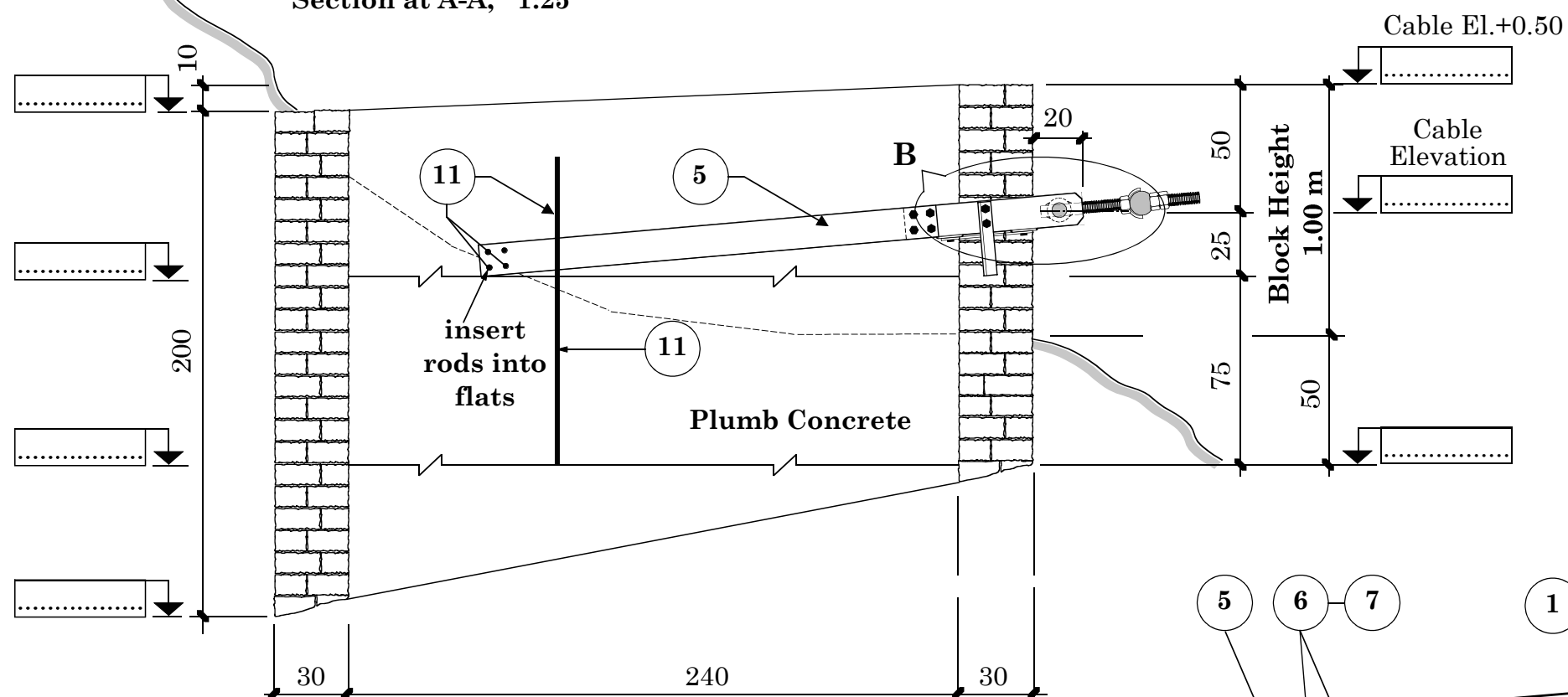


Gravity Soil Anchor Block for Windguy Cable

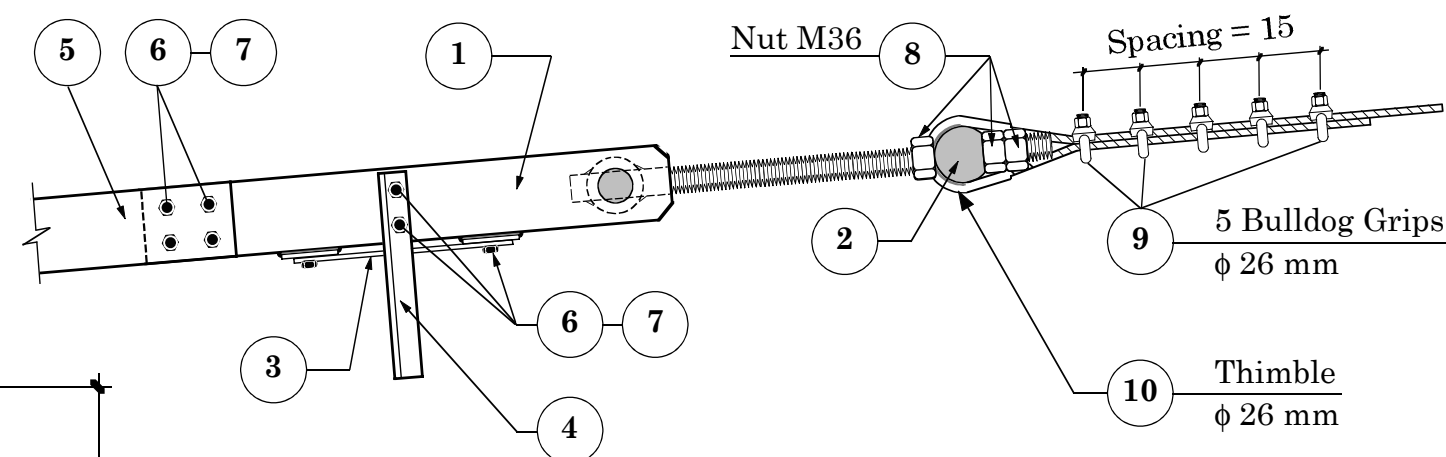
Section at A-A, 1:25



Standard Quantities

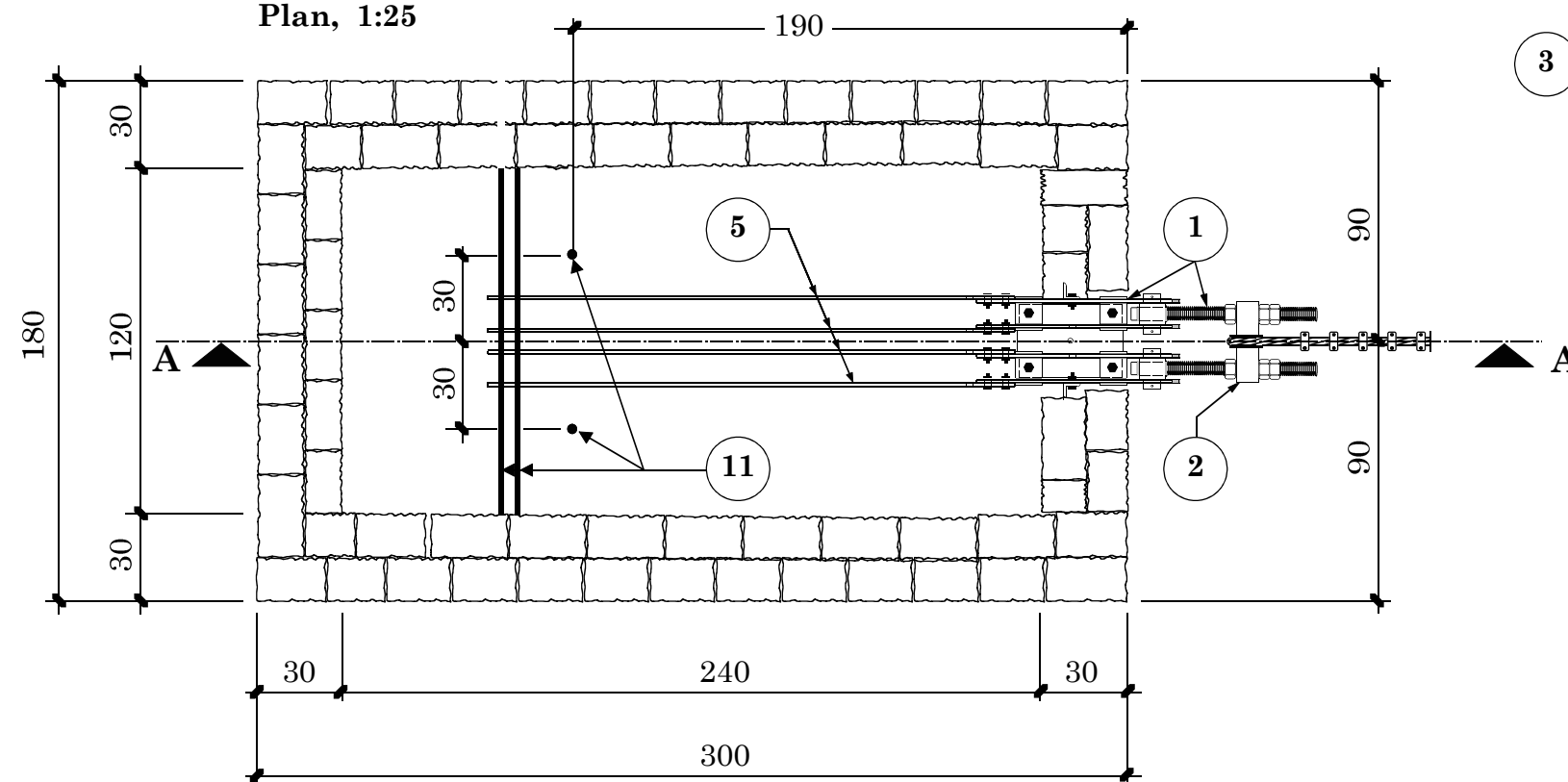
Type of Construction	[m ³]
Hammer dressed Cement Stone Masonry 1:6	4.41
Plumb Concrete 1:3:6 + 50 % Boulders	5.04
Total	9.45

Detail at B 1:10



5 for Steelpart Numbers refer to Drawing No. 50A

Plan, 1:25



*Construct dry stone retaining wall as per site condition

HMG / Ministry of Local Development DoLIDAR / Short Span Trail Bridge Standard
Bridge Name:
No: Bank: Span:
Construction Drawing:
Windguy Cable Anchor Block for Cable f 26 mm Block Height 1.0 m, for all Soil Types with Turnbuckle
Anchor Type WAB 1
Date : September 30, 2002 Drawing No. 55/1Acon