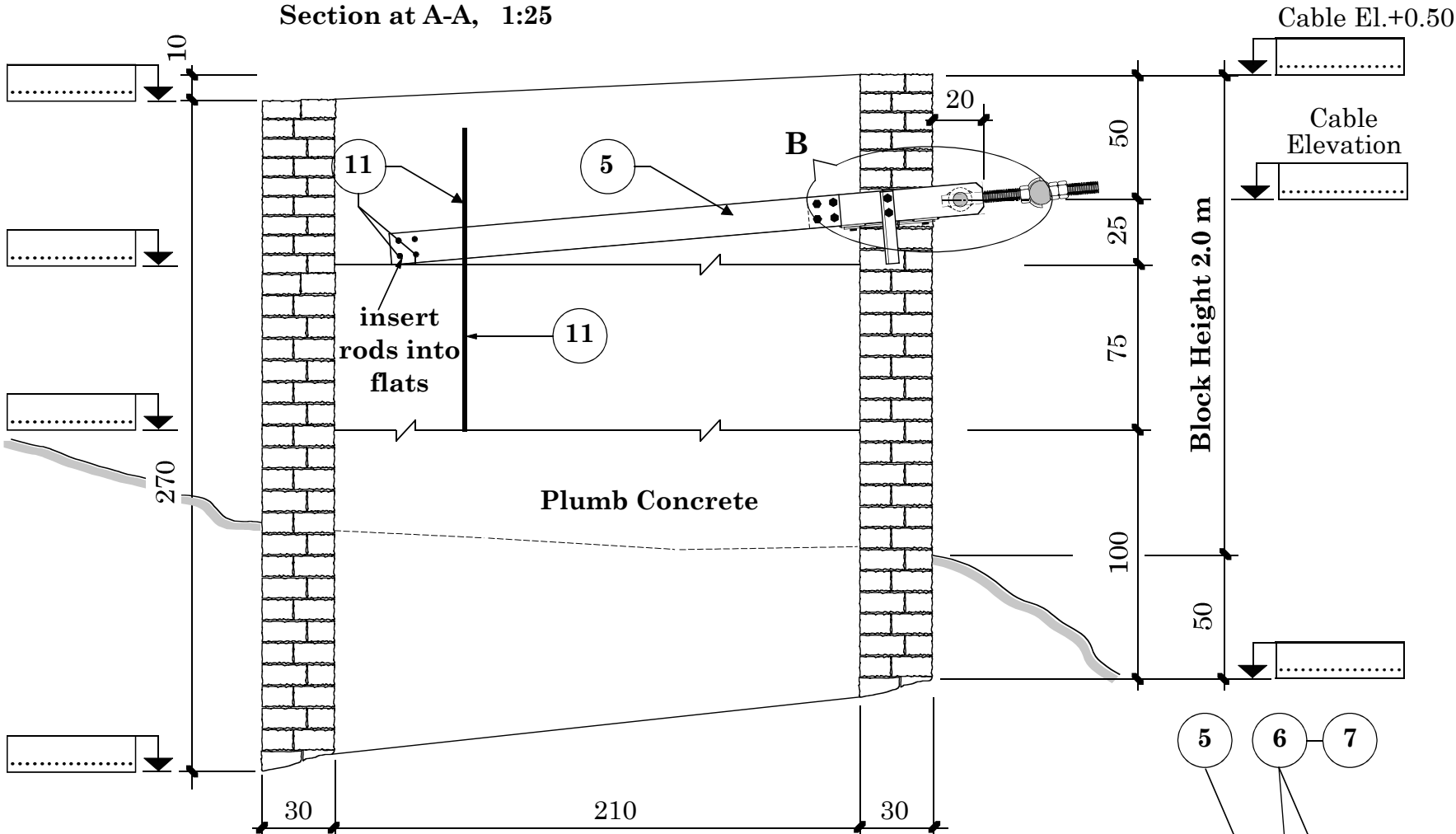


Gravity Soil Anchor Block for Windguy Cable

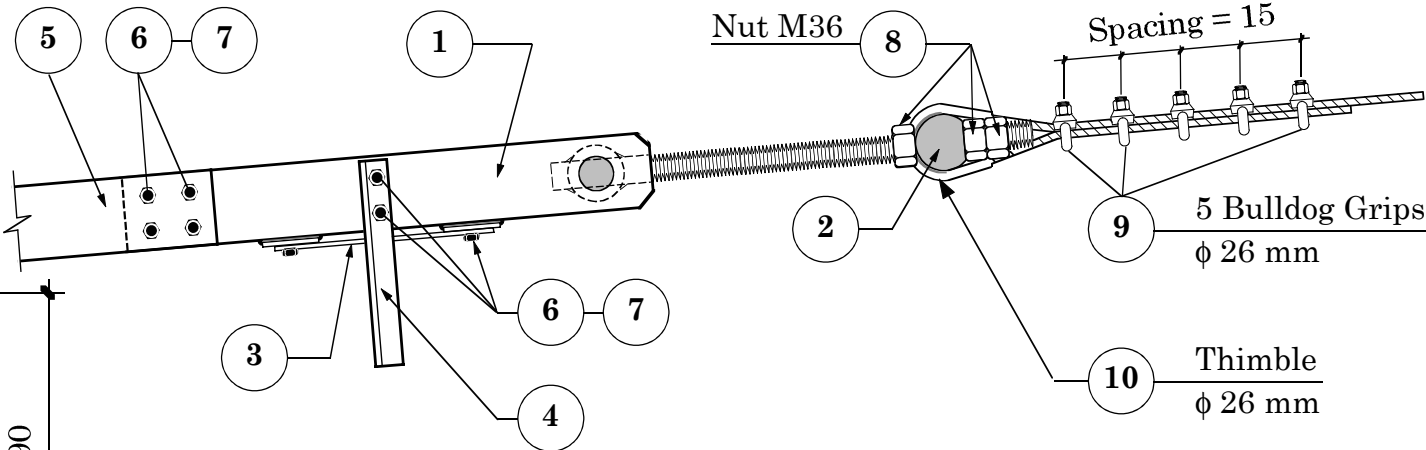
Section at A-A, 1:25



Standard Quantities

Type of Construction	[m³]
Hammer dressed Cement Stone Masonry 1:6	6.08
Plumb Concrete 1:3:6 + 50 % Boulders	6.55
Total	12.64

Detail at B 1:10



5 for Steelpart Numbers refer to Drawing No. 50A

HMG / Ministry of Local Development DoLIDAR / Short SpanTrail Bridge Standard		
Bridge Name:		
No:	Bank:	Span:
Construction Drawing:		
Windguy Cable Anchor Block for Cable f 26 mm Block Height 2.0 m, for all Soil Types with Turnbuckle		
Anchor Type WAB 2		
Date : September 30, 2002 Drawing No. 55/2Acon		

