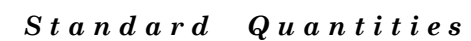
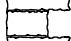
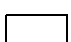


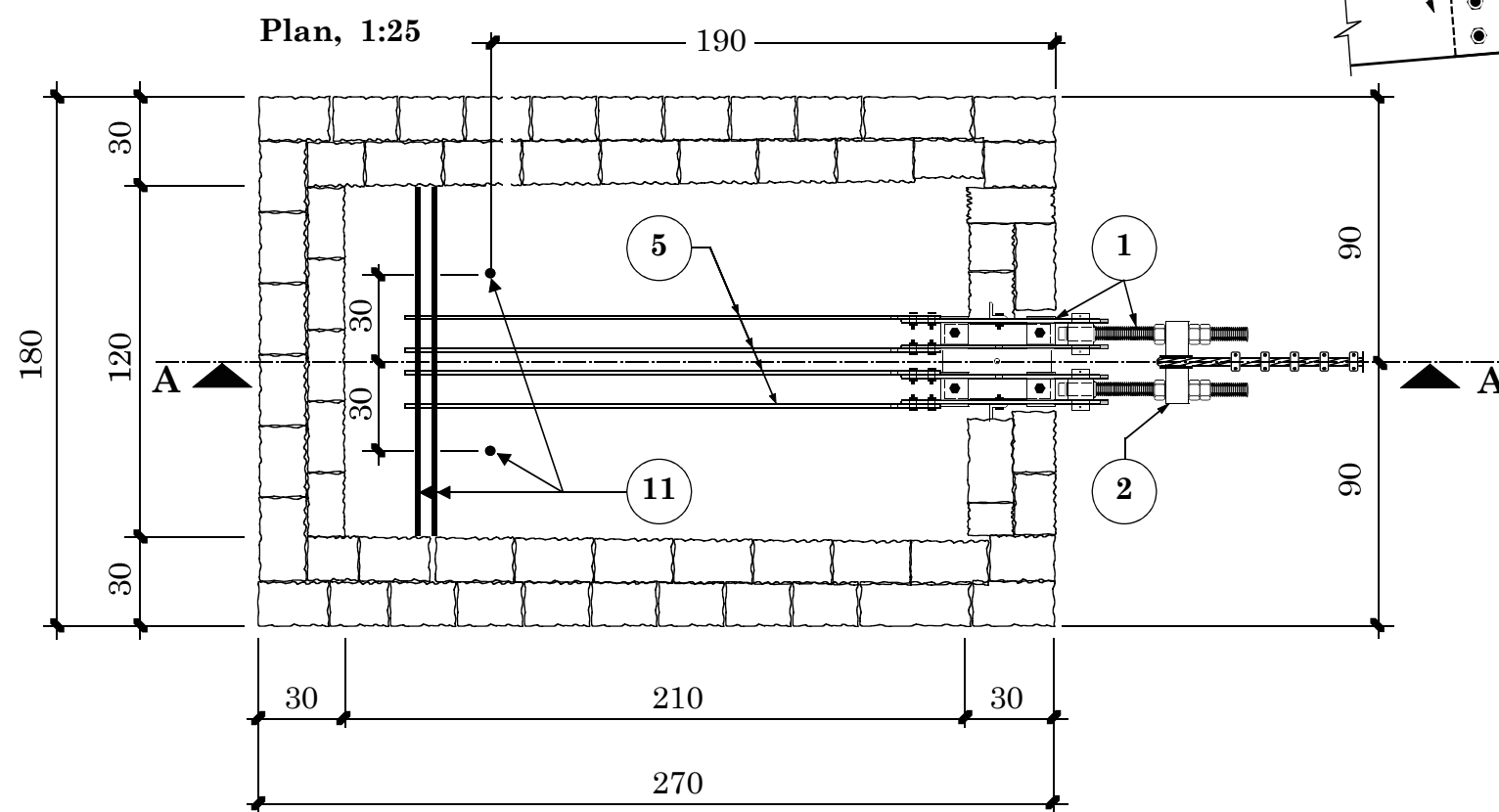
Section at A-A, 1:25



Type of Construction	[m ³]
 Hammer dressed Cement Stone Masonry 1:6	8.19
 Plumb Concrete 1:3:6 + 50 % Boulders	8.82
Total	17.01

[illegible]

5 for Steelpart Numbers refer
to Drawing No. 50A



HMG / Ministry of Local Development DoLIDAR / Short SpanTrail Bridge Standard		
Bridge Name:		
No:	Bank:	Span:
Construction Drawing:		
<p style="text-align: center;">Windguy Cable Anchor Block for Cable f 26 mm Block Height 3.0 m, for all Soil Types with Turnbuckle</p>		
<div style="border: 1px solid black; padding: 5px; text-align: center;"> Anchor Type WAB 3 </div>		
Date : September 30, 2002 Drawing No. 55/3Acon		