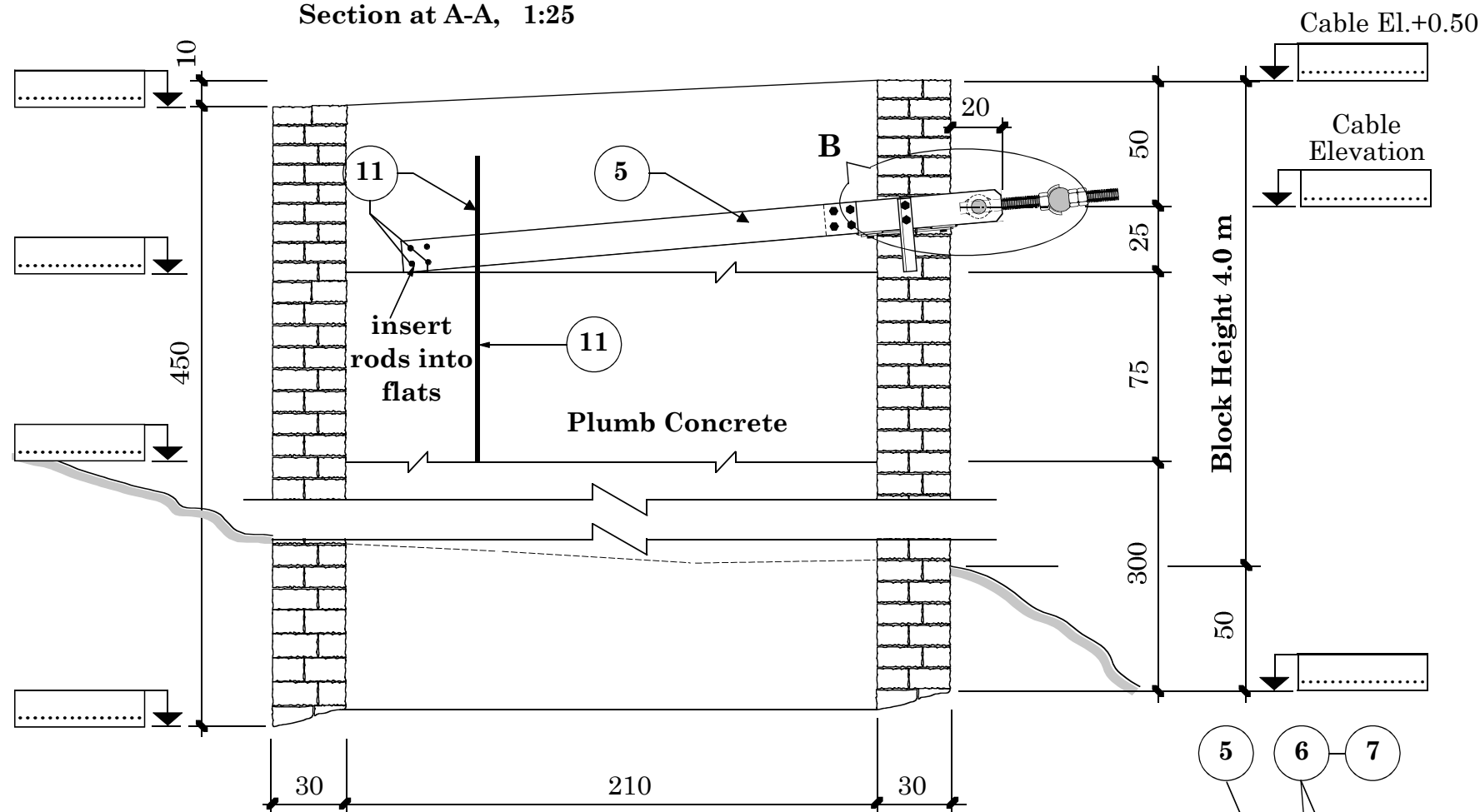


Gravity Soil Anchor Block for Windguy Cable

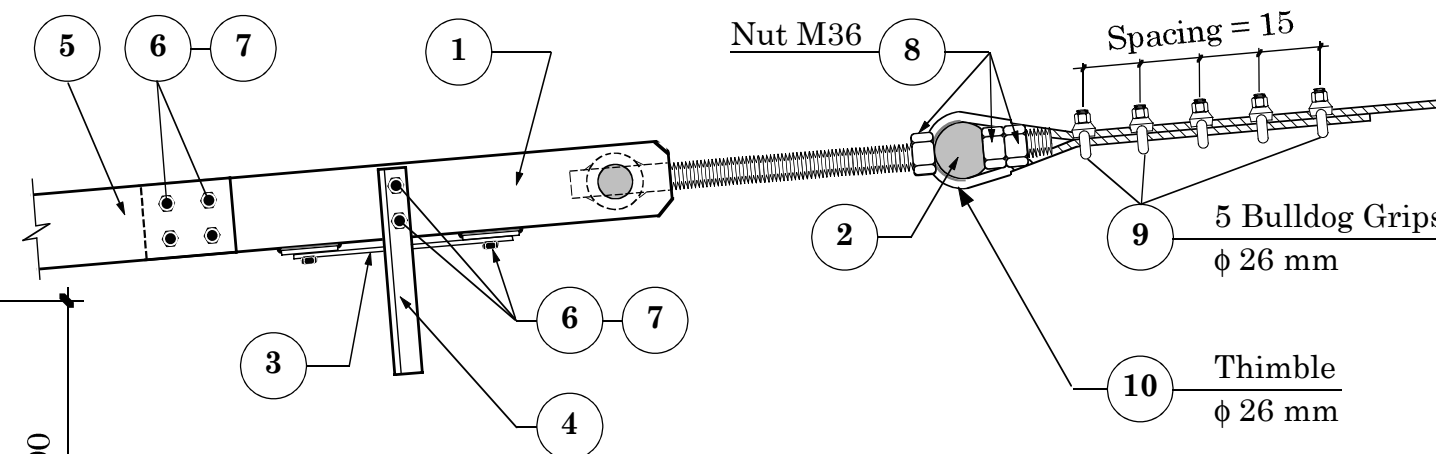
Section at A-A, 1:25



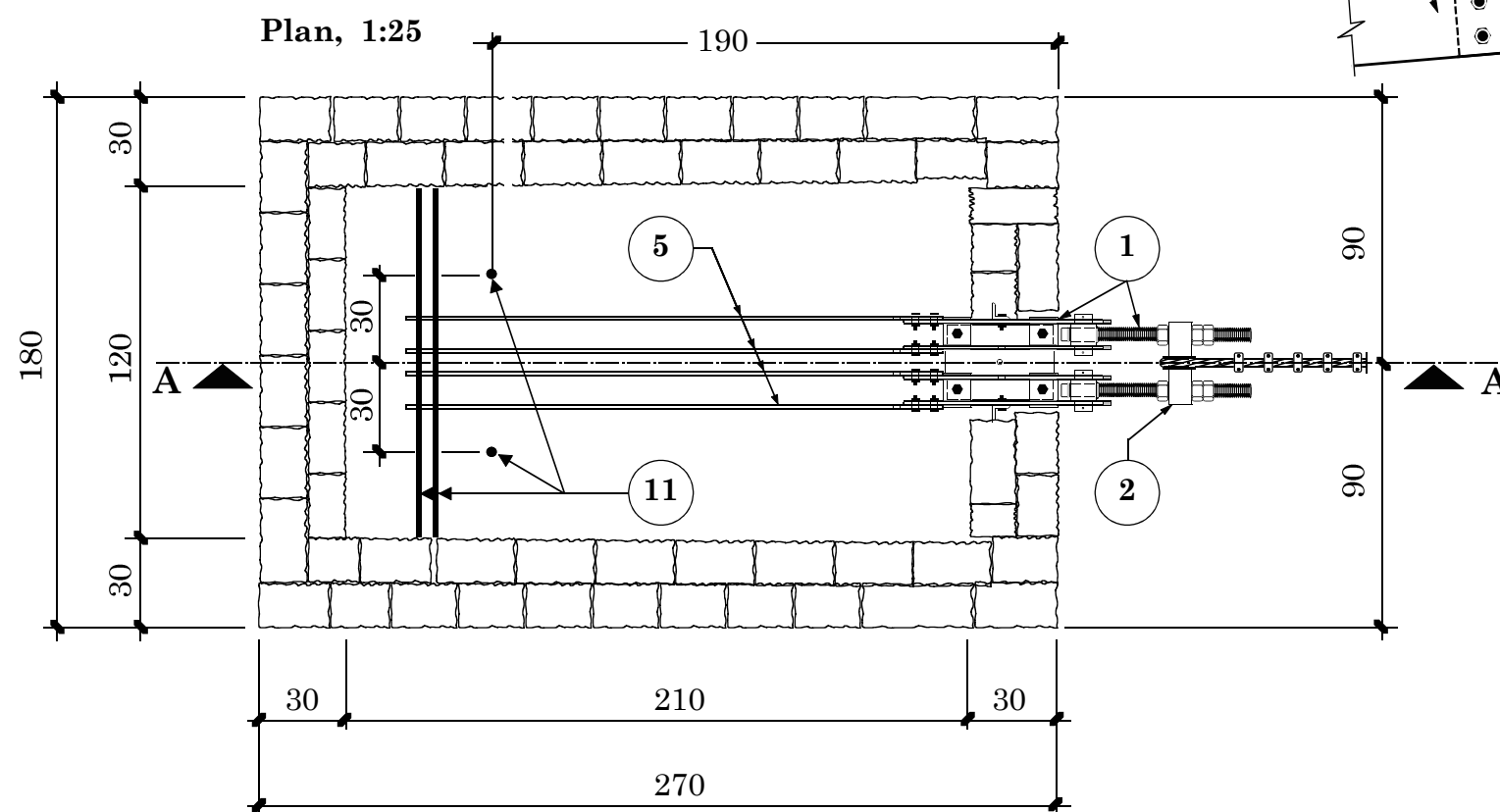
Standard Quantities

Type of Construction	[m ³]
Hammer dressed Cement Stone Masonry 1:6	10.53
Plumb Concrete 1:3:6 + 50 % Boulders	11.34
Total	21.87

Detail at B 1:10



5 for Steelpart Numbers refer
to Drawing No. 50A



HMG / Ministry of Local Development DoLIDAR / Short SpanTrail Bridge Standard
Bridge Name:
No: Bank: Span:
Construction Drawing: Windguy Cable Anchor Block for Cable f 26 mm Block Height 4.0 m, for all Soil Types with Turnbuckle
Anchor Type WAB 4
Date : September 30, 2002 Drawing No. 55/4Acon