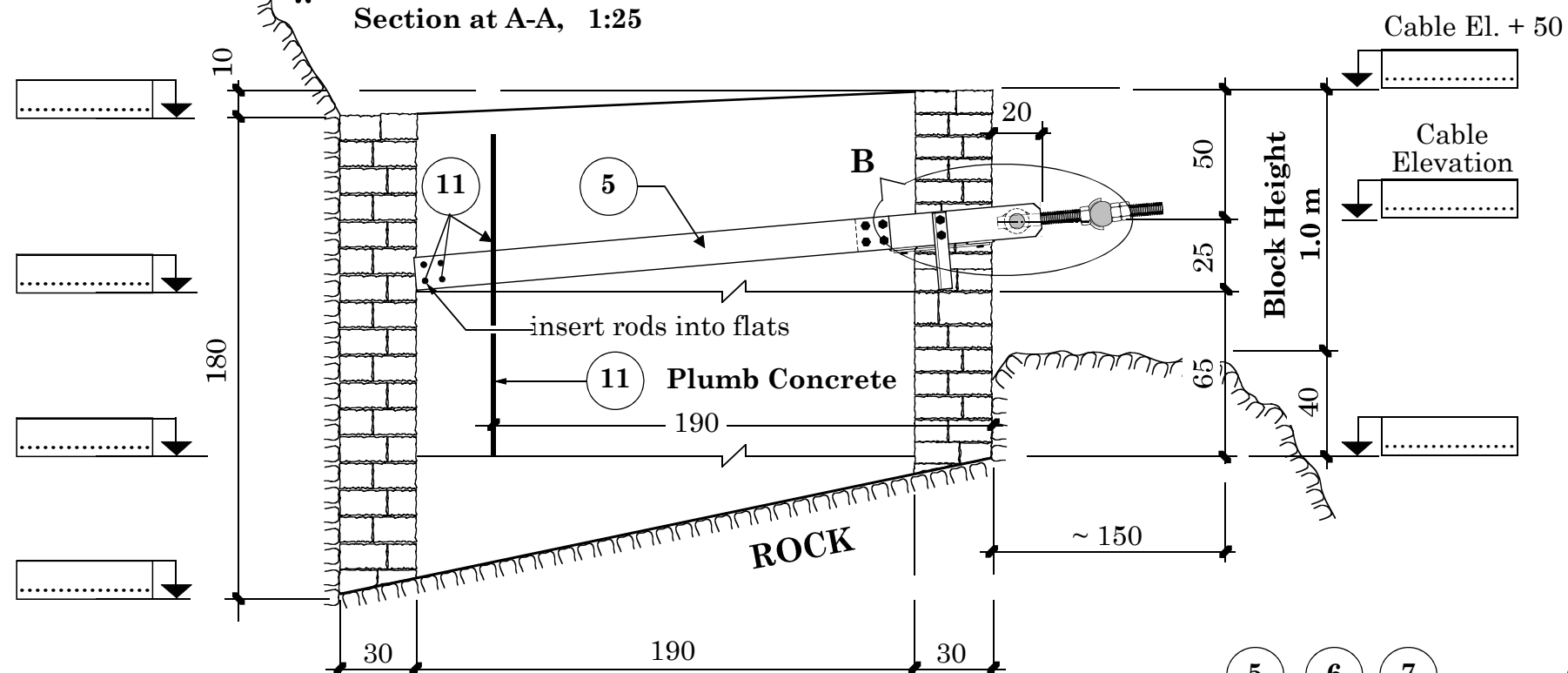


Gravity Soil Anchor Block for Windguy Cable

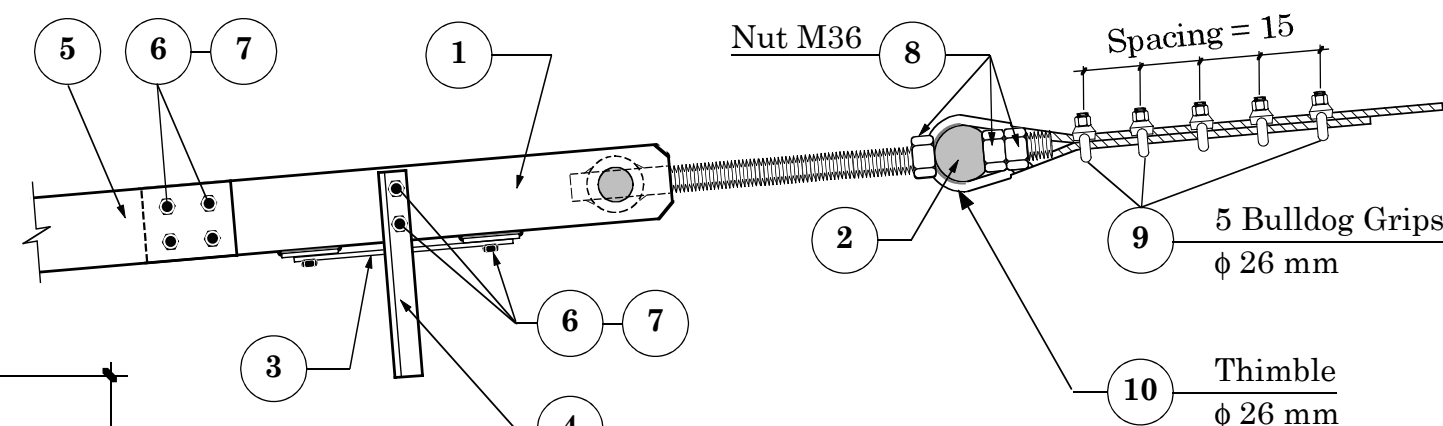
Section at A-A, 1:25



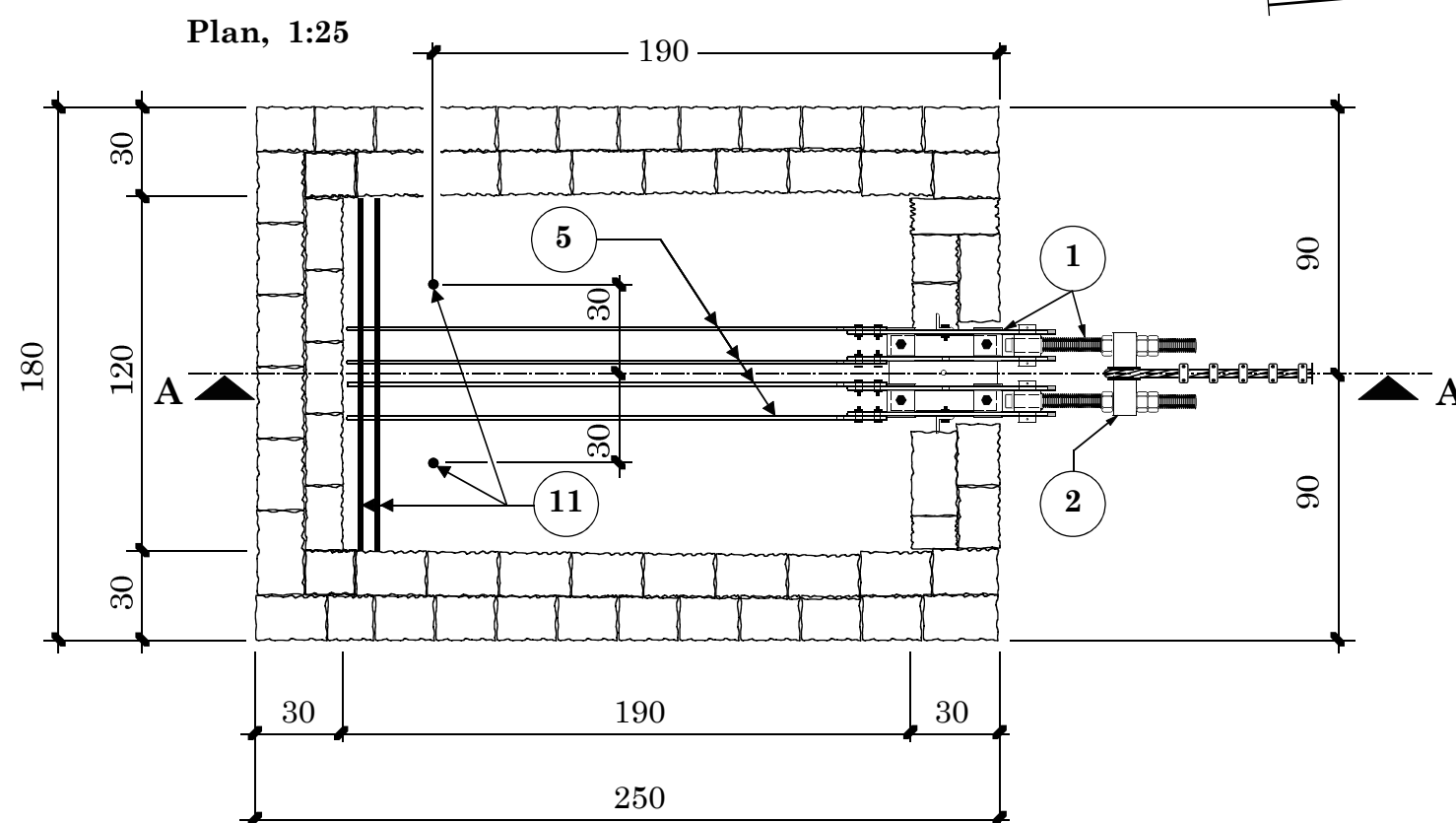
Standard Quantities

Type of Construction	[m ³]
Hammer dressed Cement Stone Masonry 1:6	3.56
Plumb Concrete 1:3:6 + 50 % Boulders	3.64
Total	7.20

Detail at B 1:10



5 for Steelpart Numbers refer to Drawing No. 50A



*Construct dry stone retaining wall as per site condition

HMG / Ministry of Local Development DoLIDAR / Short Span Trail Bridge Standard		
Bridge Name:	No:	Bank: Span:
Construction Drawing: Windguy Cable Anchor Block for Cable f 26 mm Block Height 1.0 m, for all Rock Types with Turnbuckle Anchor Type WAB 5		
Date : September 30, 2002	Drawing No. 56Acon	