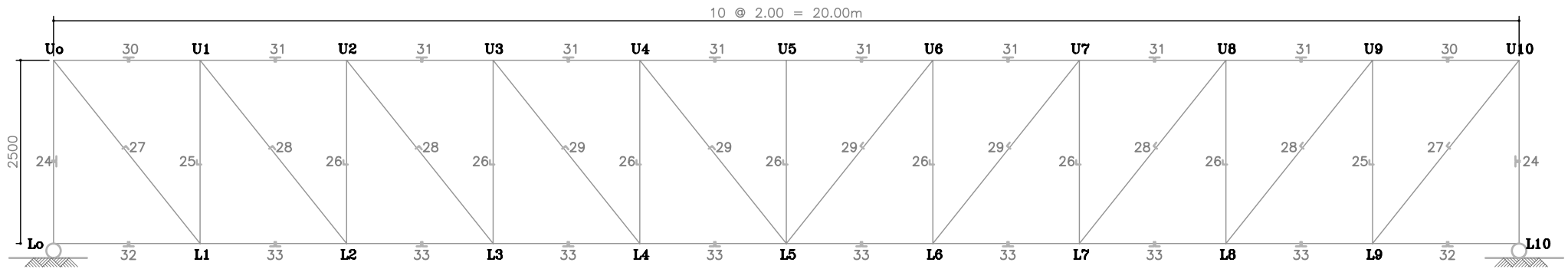
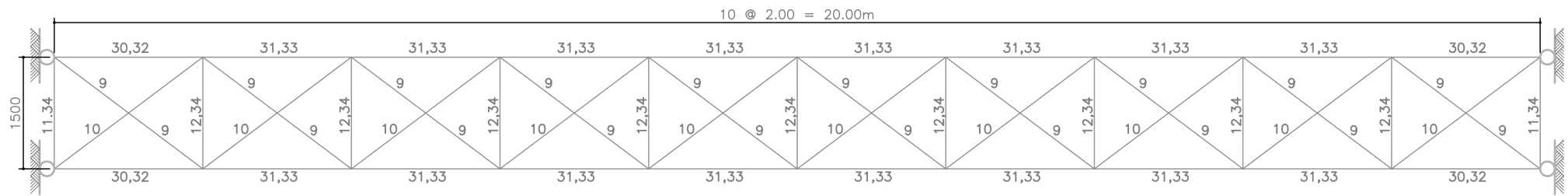


Note :
Manufacturer should verify the Working and Assembly
Drawing for it's accuracy before fabrication

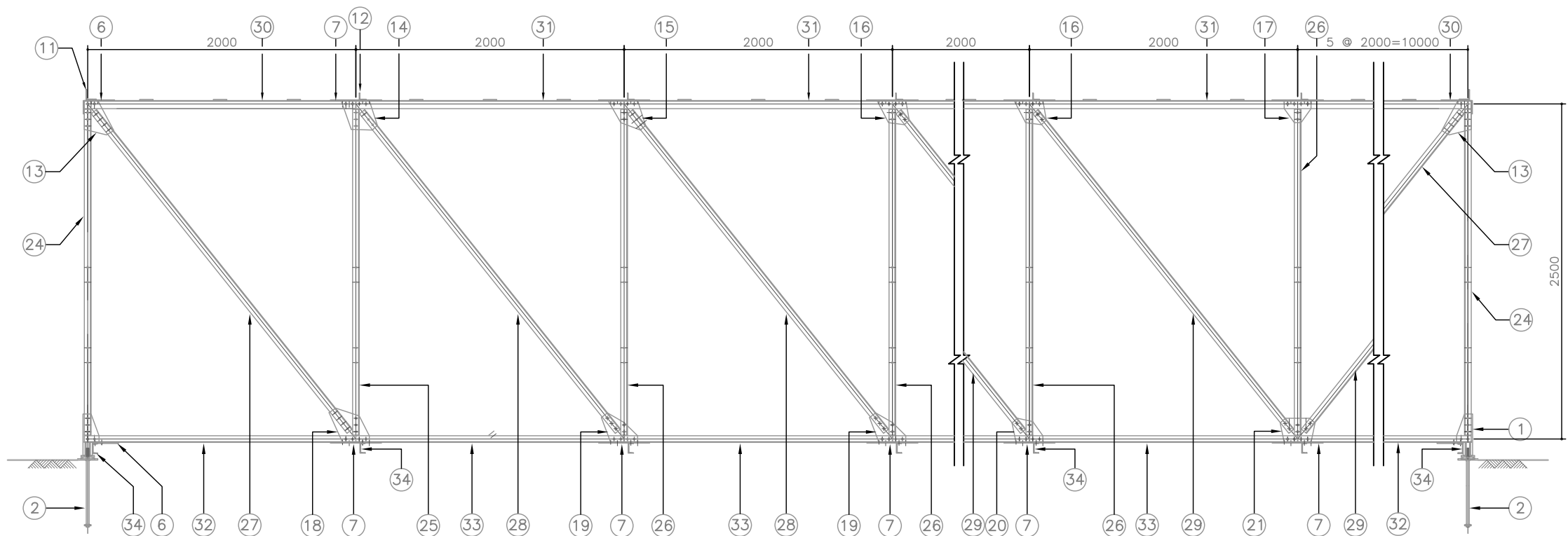
TRUSS SYSTEM



ELEVATION
SCALE 1:80

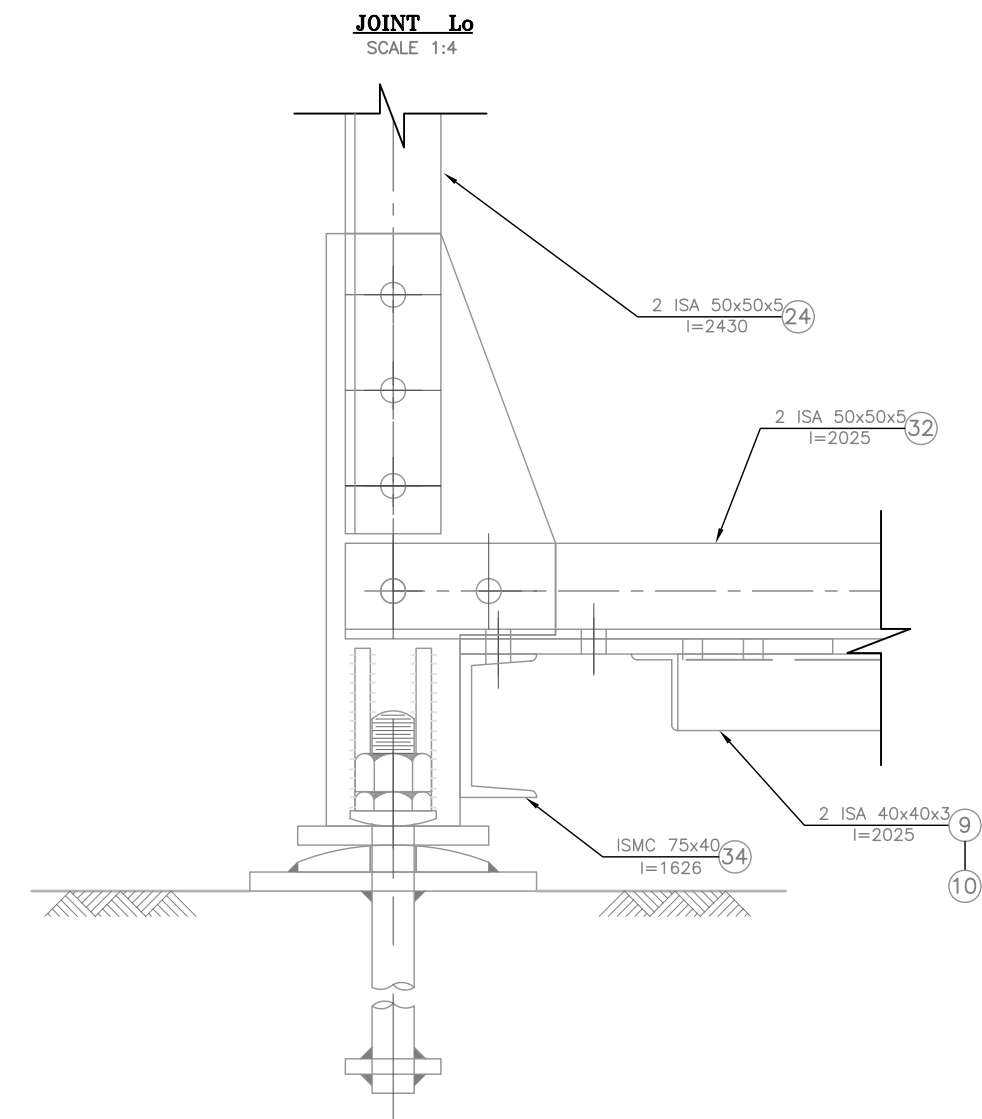
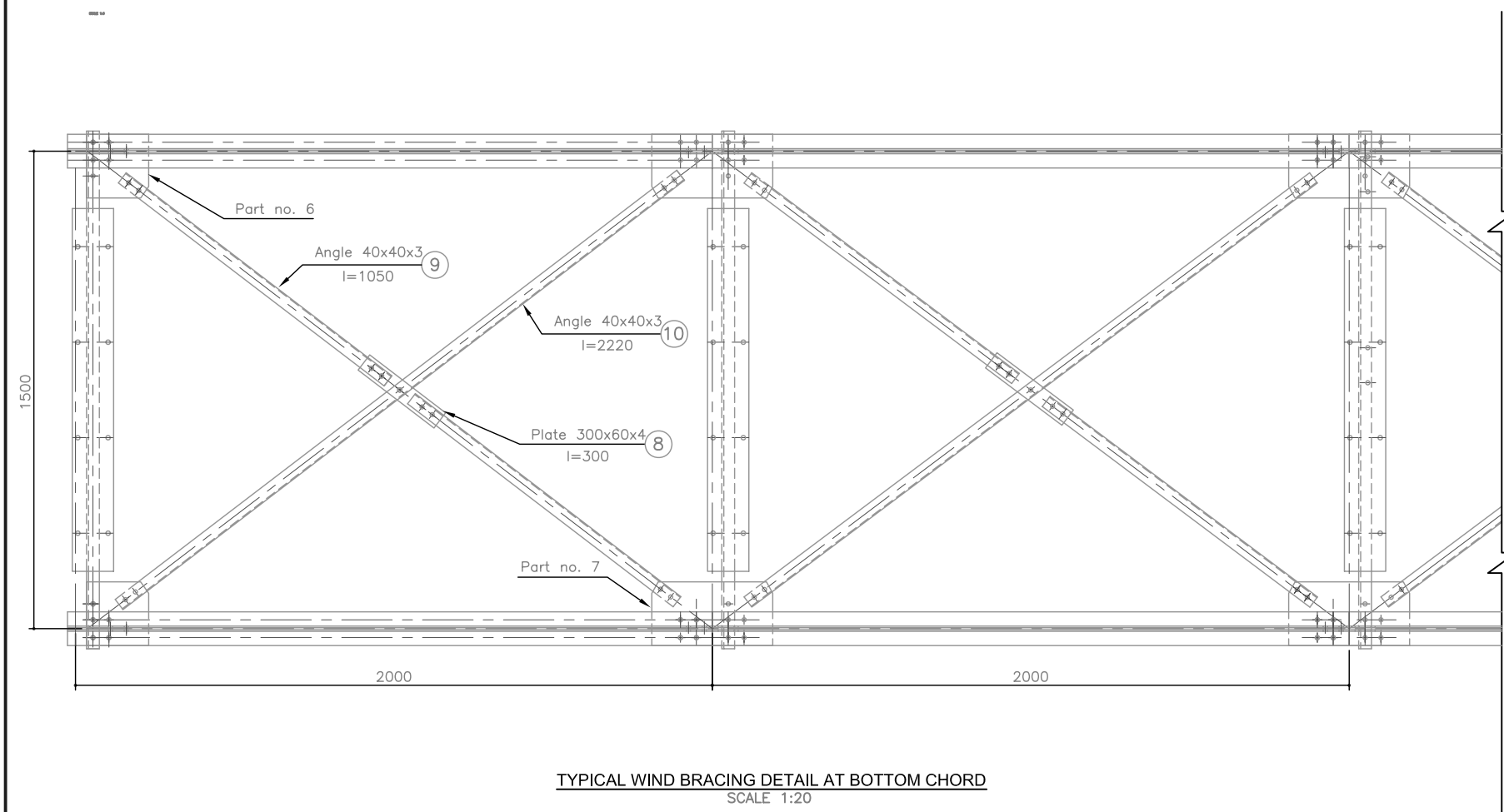


PLAN AT TOP & BOTTOM CHORD SHOWS WIND BRACING
SCALE 1:80

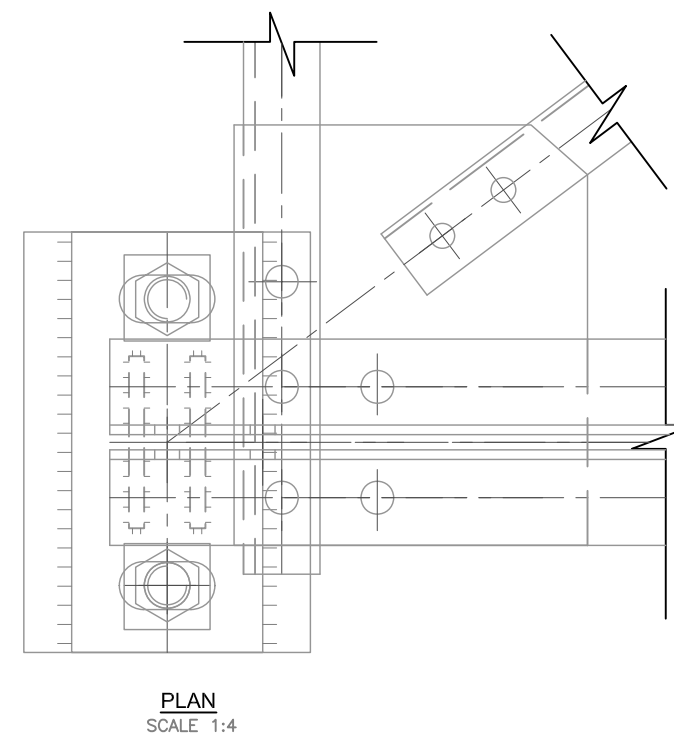
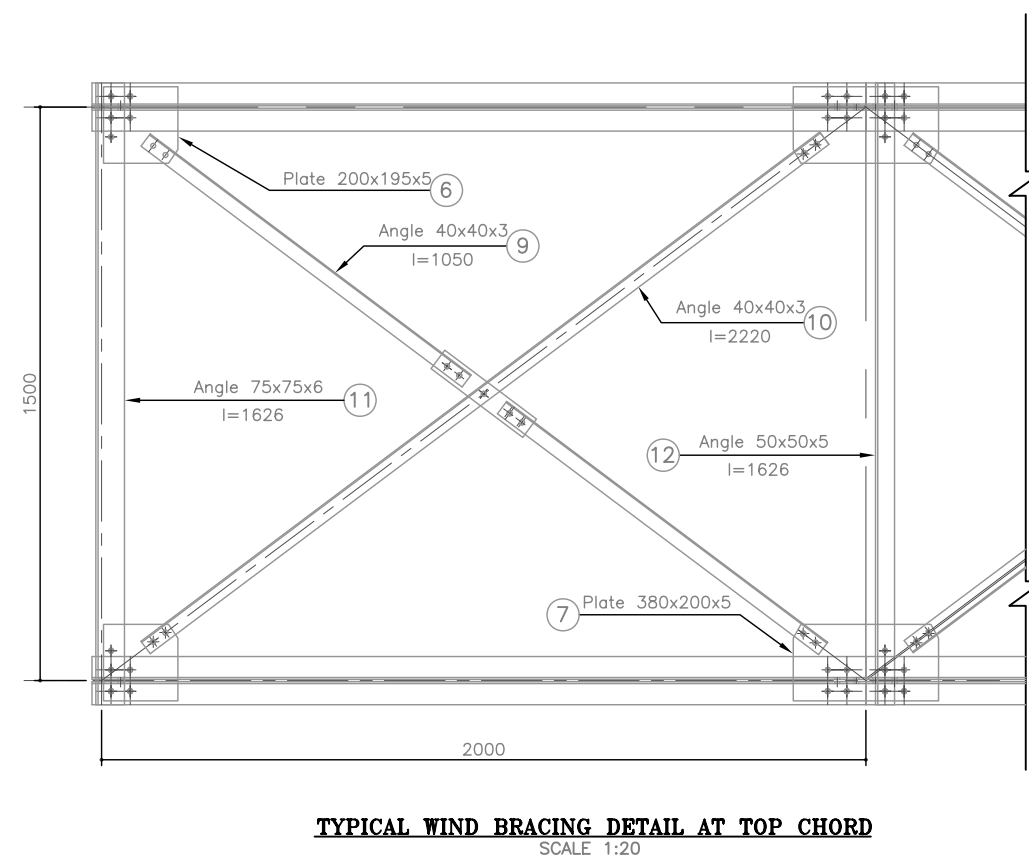


ELEVATION
SCALE 1:80

MoFALD / DoLIDAR / Trial Bridge Section Truss Bridge Standard	
Bridge No :	Name :
Span : 20.0 m	
Strutural Drawing :	
Erection Drawing	
Date: July 2013	Drawing No: T12E



Note :
Manufacturer should verify the Working and Assembly Drawing for it's accuracy before fabrication



Note :
Manufacturer shall re-check the workshop drawings for it's accuracy.

MoFaLD / DoLIDAR / Trial Bridge Section
Truss Bridge Standard

Bridge No : **Name :**

Span : 20.0 m

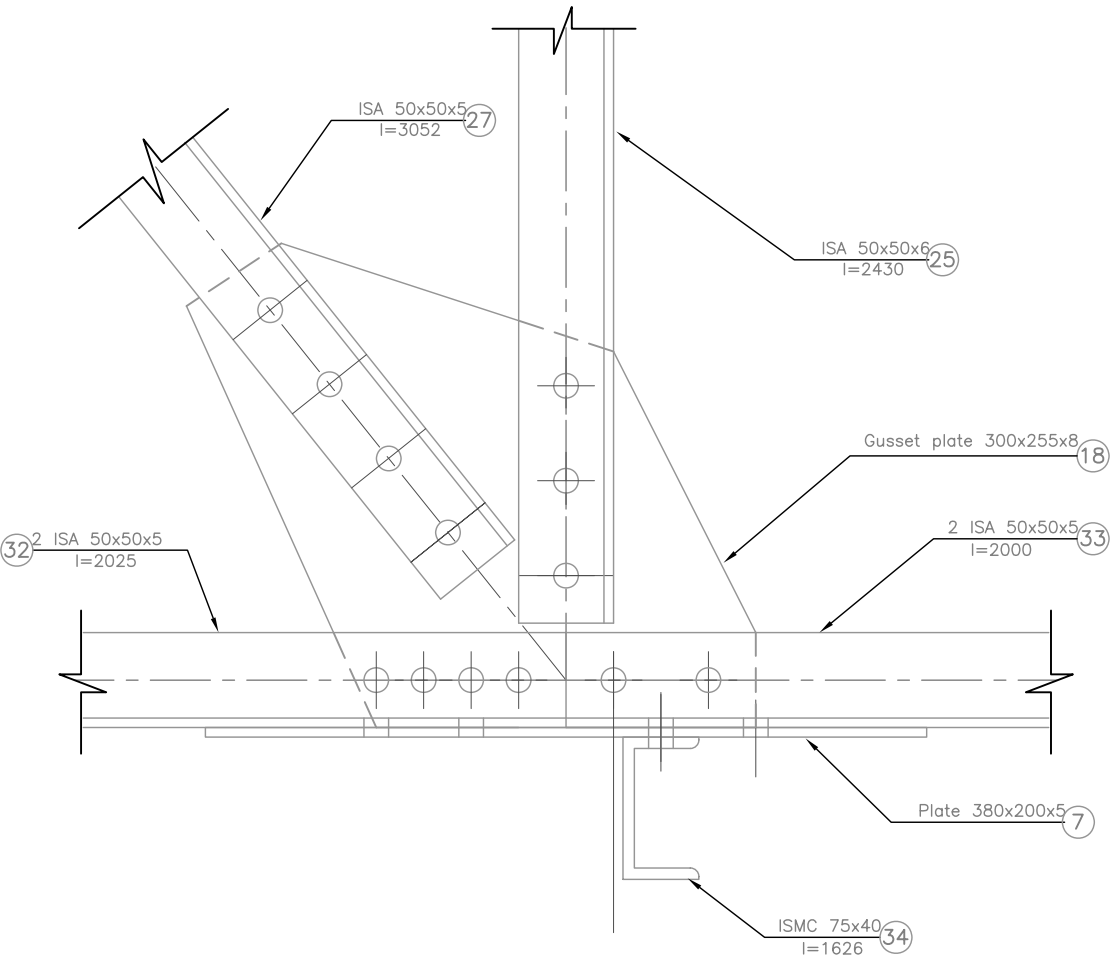
Strutural Drawing :

Erection Drawing

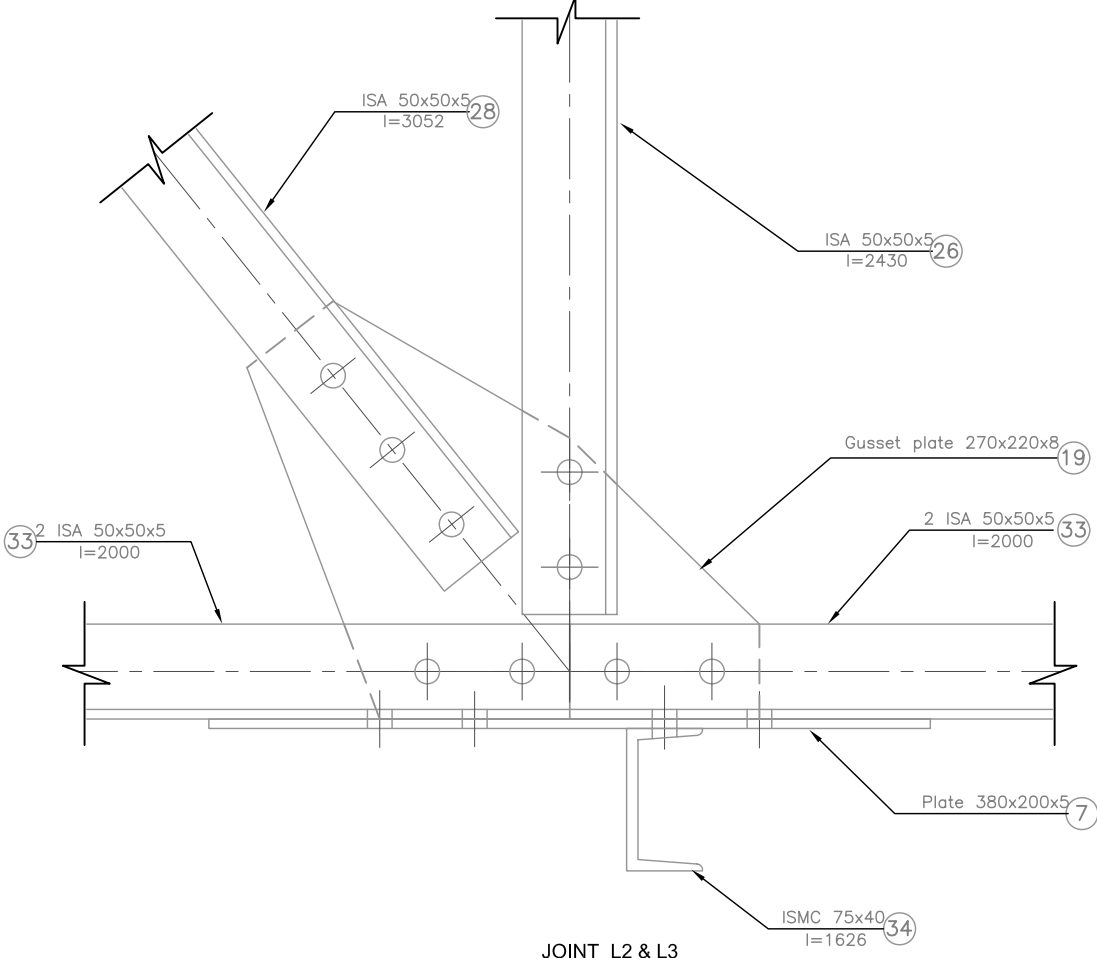
Date: July 2013

Drawing No: T13E

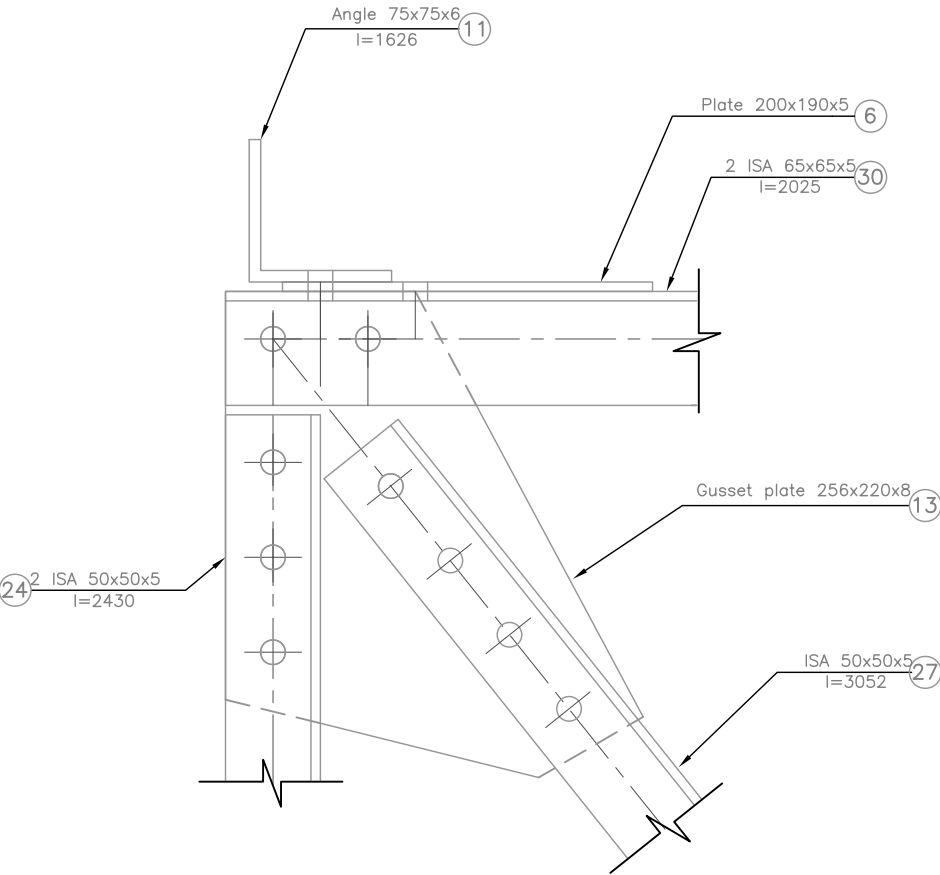
Note :
Manufacturer should verify the Working and Assembly
Drawing for it's accuracy before fabrication



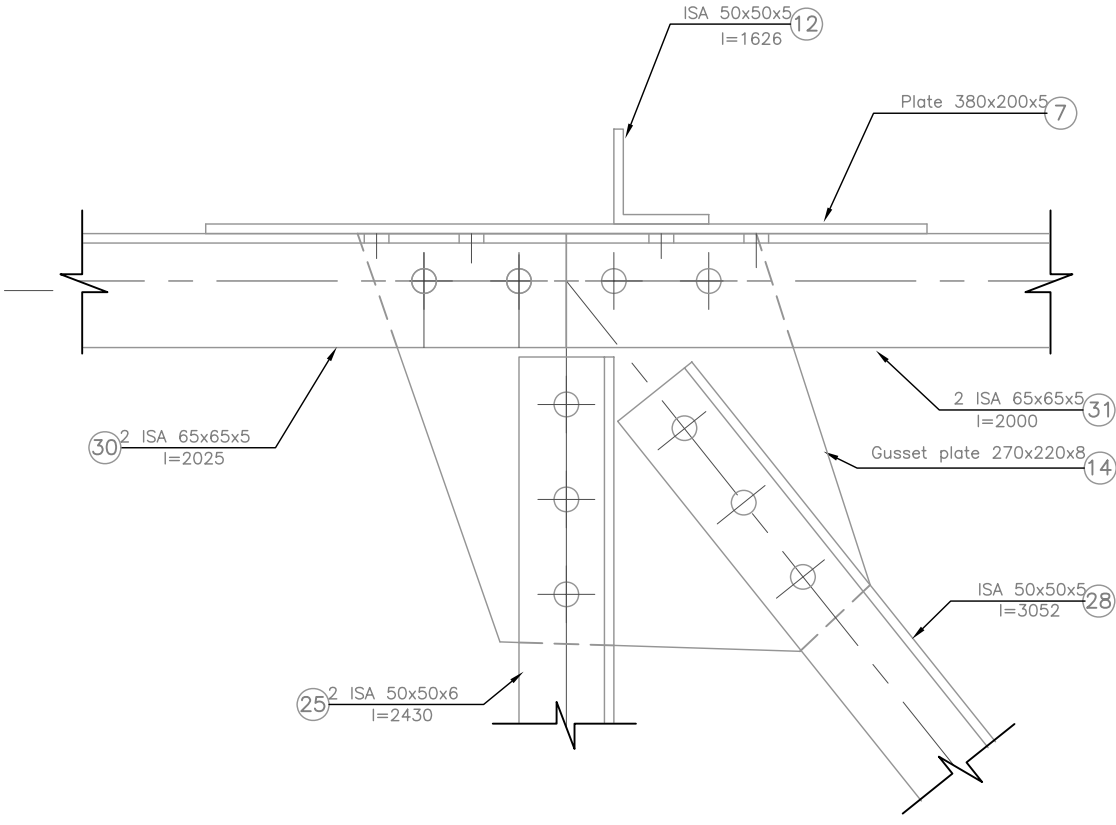
JOINT L1
SCALE 1:4



JOINT L2 & L3
SCALE 1:4



JOINT Uo
SCALE 1:4



JOINT U1
SCALE 1:4

MoFALD / DoLIDAR / Trial Bridge Section
Truss Bridge Standard

Bridge No : Name :

Span : 20.0 m

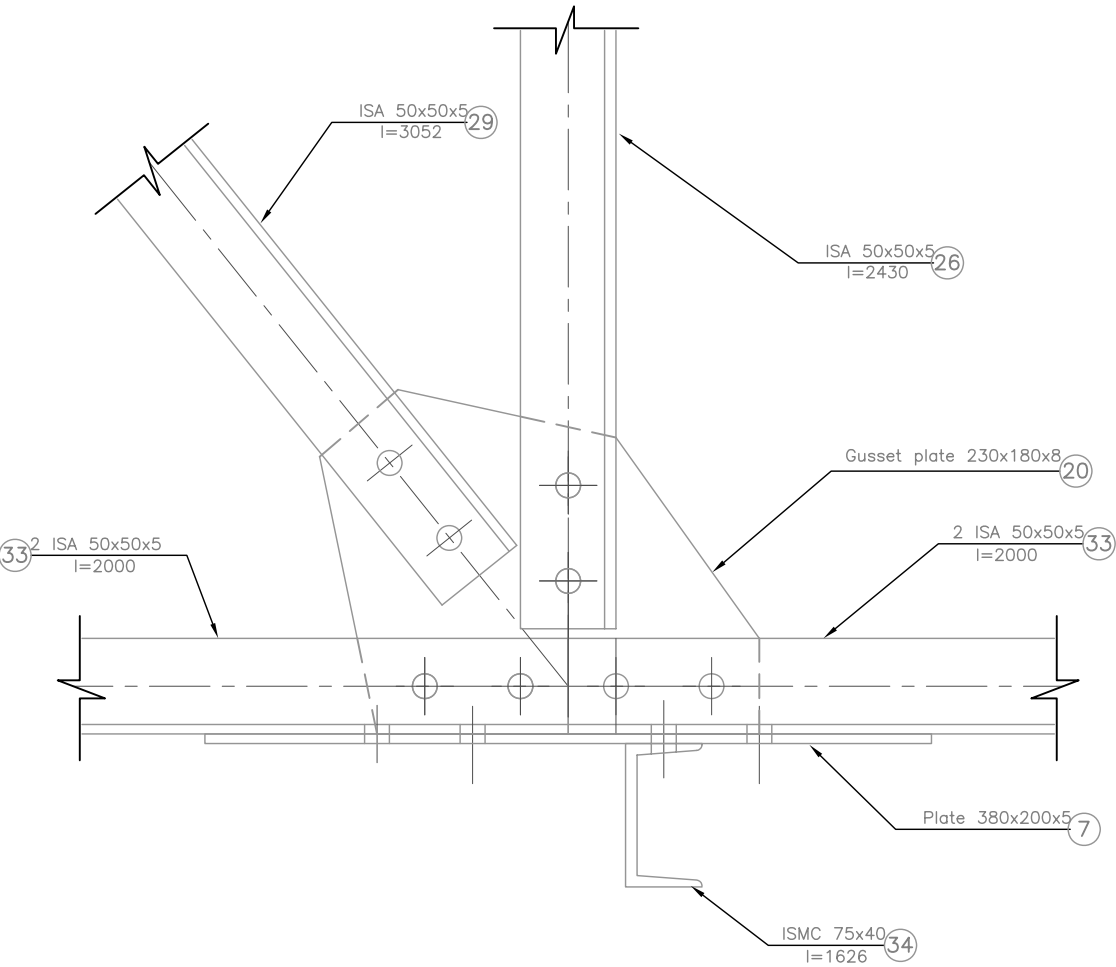
Strutural Drawing :

Erection Drawing

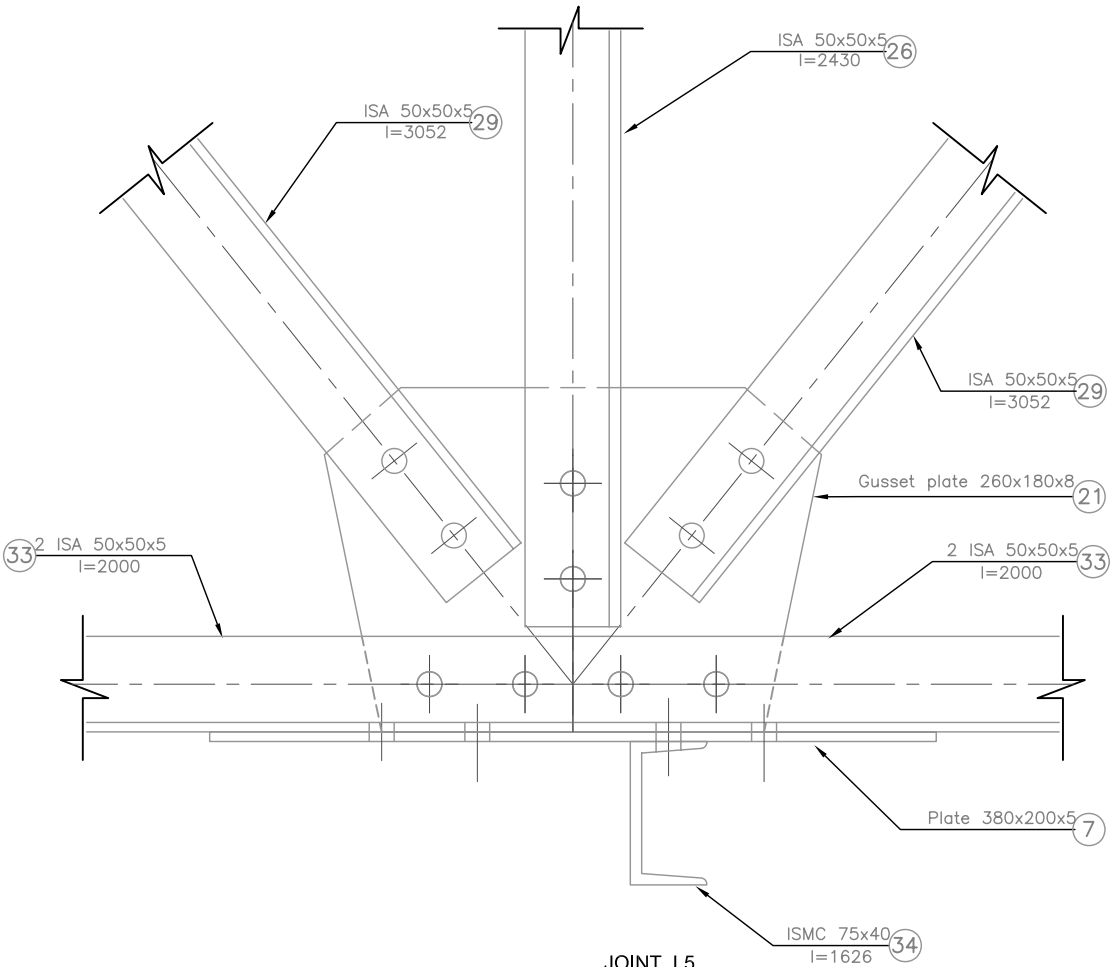
Date: July 2013

Drawing No: T14E

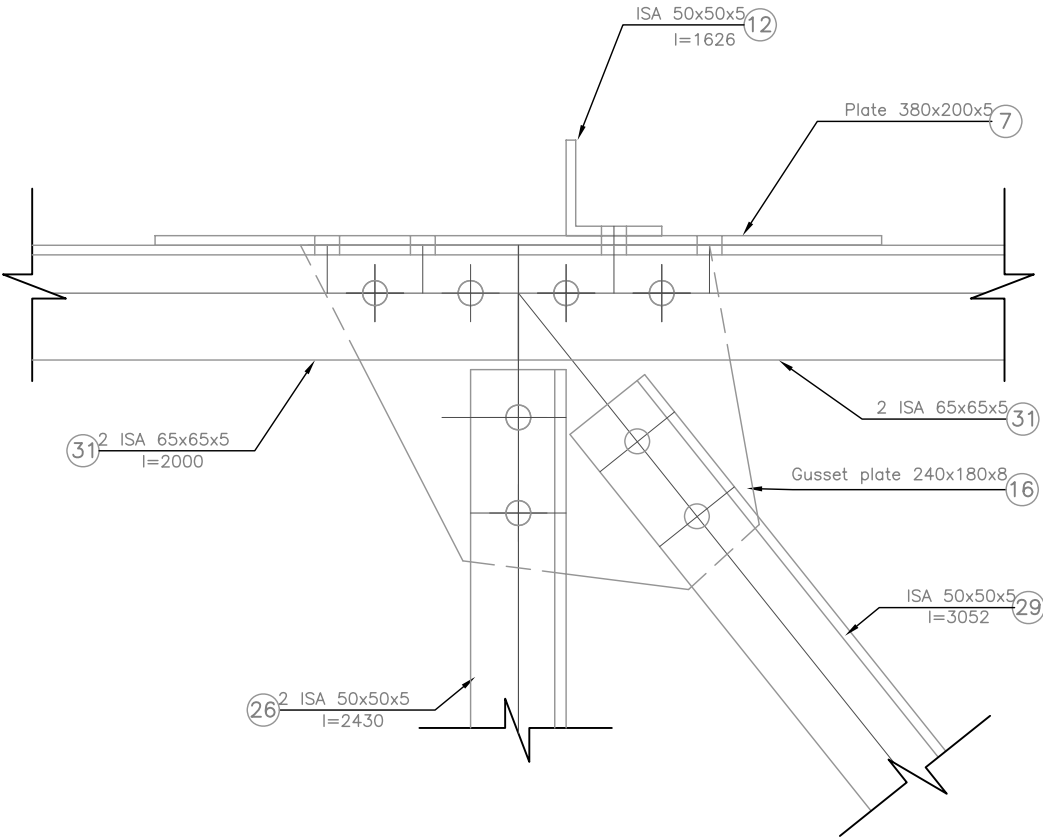
Note :
Manufacturer should verify the Working and Assembly
Drawing for it's accuracy before fabrication



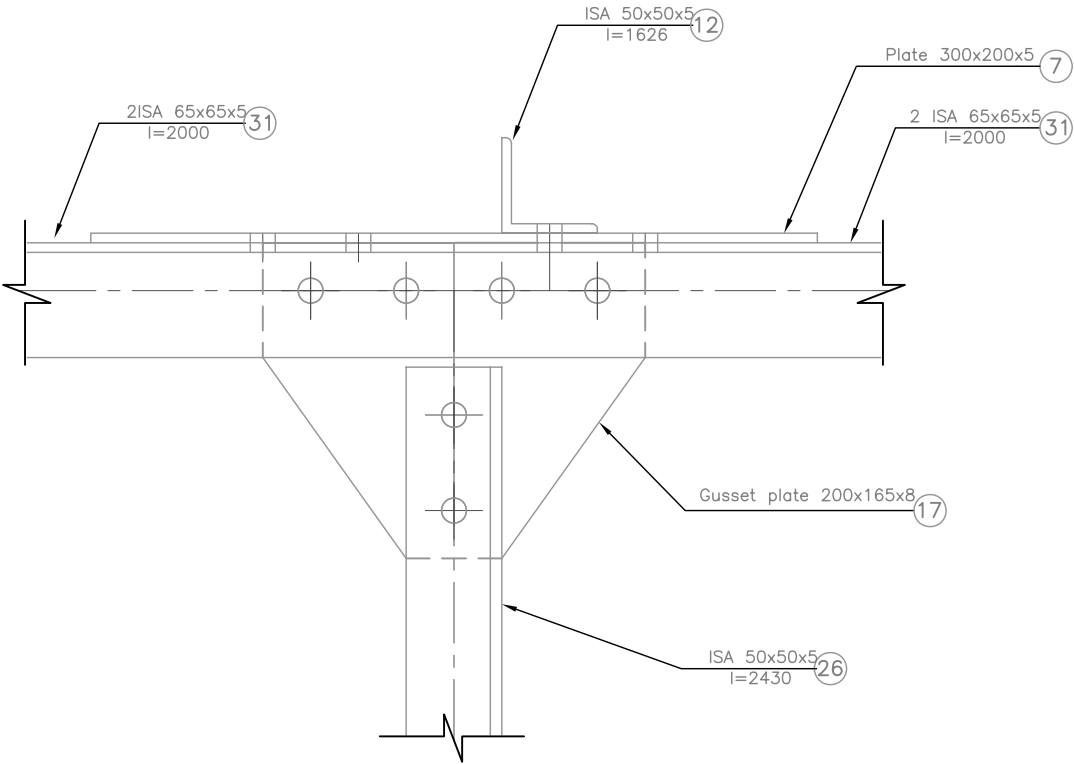
JOINT L4
SCALE 1:4



JOINT L5
SCALE 1:4

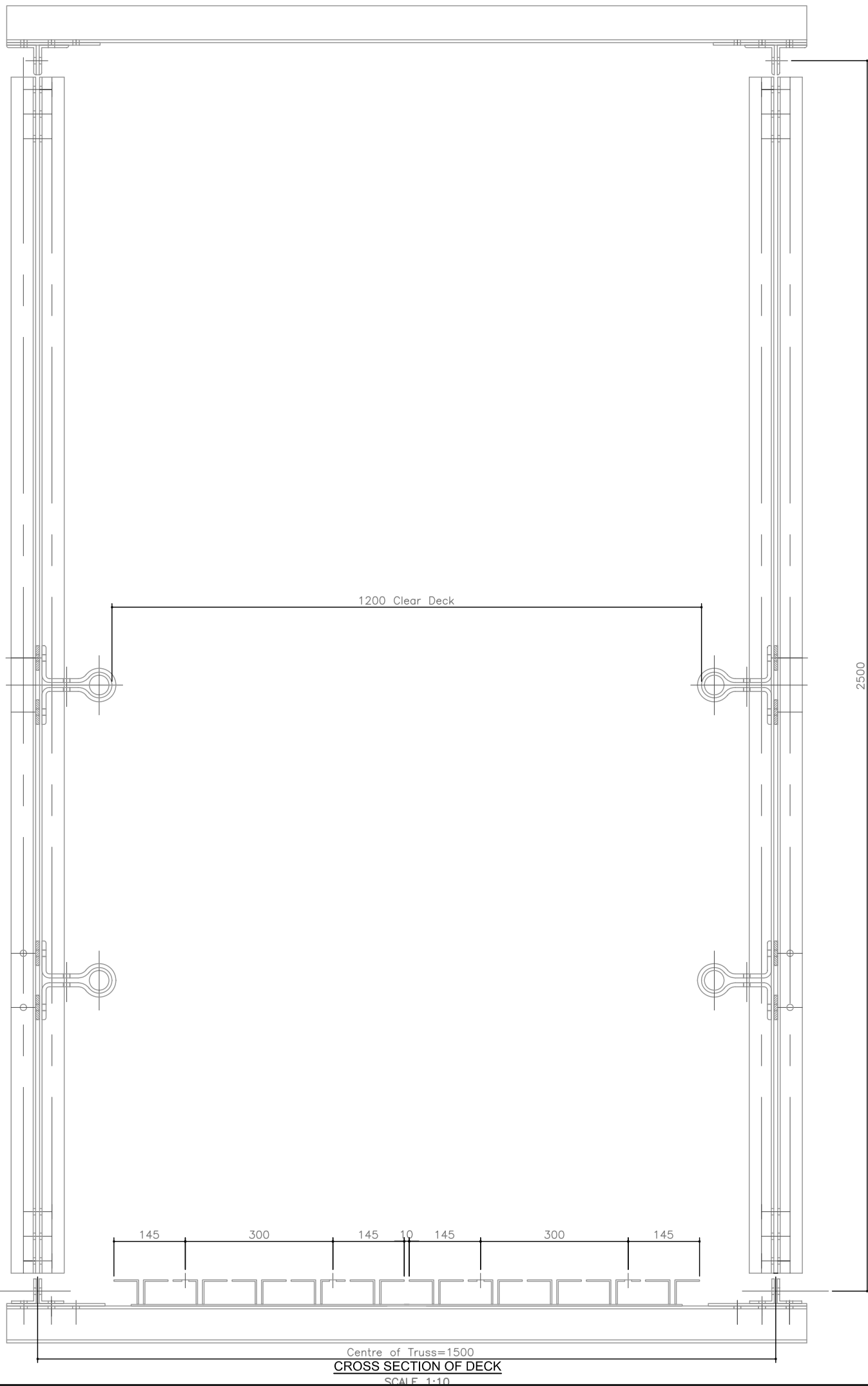


JOINT U3 & U4
SCALE 1:4



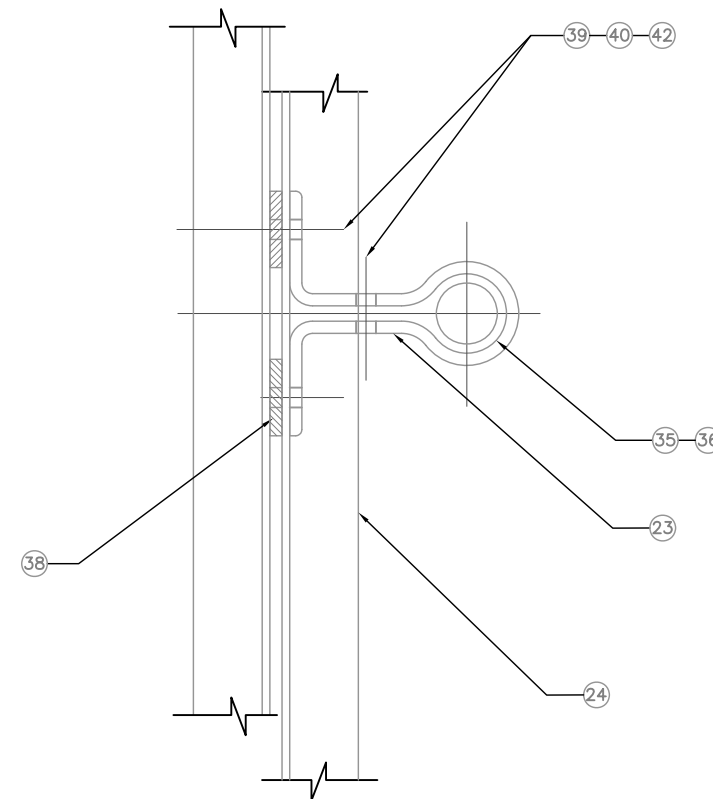
JOINT U5
SCALE 1:4

MoFALD / DoLIDAR / Trial Bridge Section Truss Bridge Standard	
Bridge No :	Name :
Span : 20.0 m	
Strutural Drawing :	
Erection Drawing	
Date: July 2013	Drawing No: T15E



NOTES :-

- 1) UPPER CHORD 2L 60 x 60 x 5 (PART NO. 30 OR 31)
- 2) LOWER CHORD 2L 50 x 50 x 5 (PART NO. 32 OR 33)
- 3) VERTICALS 1L 50 x 50 x 5 (PART NO.26)
EXCEPT U₀,L₀ & U₁₂, L₁₂ – 2L x 50 x 50 x 5 (PART NO. 24) &
EXCEPT U₁,L₁ & U₁₁,L₁₁–1L x 50 x 6 (PART NO. 25)
- 4) DIGONALS 1L 50 x 50 x 5 (PART NO. 27,28 & 29)
- 5) GUSSET 6mm THICK
- 6) WIND BRACINGS AT UPPER & LOWER CHORD
 - A) DIAGONALS – 1L 40 x 40 x 3 (PART NO. 9 & 10)
 - B) END STURT – 1L 75 x 75 x 6 (PART NO. 11)
 - C) INTERNAL STURT – 1L 50 x 50 x 5 (PART NO. 12)



FIXING OF RAILING AT END VERTICAL

SCALE 1:5

Note :
Manufacturer should verify the Working and Assembly Drawing for it's accuracy before fabrication

MoFALD / DoLIDAR / Trial Bridge Section
Truss Bridge Standard

Bridge No : Name :

Span : 20.0 m

Strutural Drawing :

Erection Drawing

Date: July 2013

Drawing No: T16E